

The background of the entire page is a dark grey topographic map. It features intricate white contour lines that represent elevation changes across a landscape. The lines are more densely packed in some areas, indicating steeper slopes, and more spread out in others, indicating flatter terrain. The overall pattern is complex and organic, typical of a detailed topographic survey.

Tūpuna Maunga o Tāmaki Makaurau Authority

Approved 23 June 2016

ISBN

978-0-9941400-0-5 (Print)

978-0-9941400-1-2 (PDF)

CONTENTS

1.	HE KŌRERO WHAKAPUAKI	1
2.	INTRODUCTION	6
3.	TĀMAKI MAKĀURAU - THE ORIGINS	13
4.	TĀMAKI MAKĀURAU - THE PEOPLE	15
5.	NGĀ MANA WHENUA O TĀMAKI MAKĀURAU COLLECTIVE REDRESS	19
6.	TŪPUNA MAUNGA O TĀMAKI MAKĀURAU	23
7.	CO-GOVERNANCE OF THE TŪPUNA MAUNGA	52
8.	INTEGRATED MANAGEMENT FRAMEWORK	57
9.	TŪPUNA MAUNGA VALUES AND PATHWAYS	59
10.	DELIVERING THE VALUES AND PATHWAYS	88



**Maunga tū Maunga ora,
Maunga ora Tāmaki ora**

1. HE KŌRERO WHAKAPUAKI

NĀ TE KAIHAUTŪ O TE UEPŪ O NGĀ TŪPUNA MAUNGA

Kei te iho o tā te Māori titiro, ko tēnei mea te whanaungatanga.

Ko ngā hononga i waenga i te iwi, ko te whānuitanga hoki o ngā taura here i te tangata ki te ao tūroa me te ao wairua kua whiria katoatia mā te whakapapa.

He mea āta tuitui hoki ngā muka o te mauri o te tangata ki ērā o te mauri o te taiao mā ngā hononga ki ngā tūpuna.

Koirā te take e mihi nei te Māori ki ngā Maunga me ngā tohu whenua pēnei i tana mihi ki te tangata, ā, koirā hoki te take e taunga nei ngā kaumātua ki te kōrero hāngai atu ki aua wāhi rā.

He mea nui ngā Tūpuna Maunga o Tāmaki Makaurau ki te tuakiritanga o te Mana Whenua, otirā, kei te iho hoki o te tuakiritanga ā-rohe, ā-motu hoki o Tāmaki Makaurau. Nā ngā ingoa me te horanuku o aua wāhi ka pupū ake ngā maharatanga ki ngā tūpuna me ngā tūāhuatanga ā-iwi e tāpua ana. Mā ēnei taonga tuku iho e pūmau ai tā tātou noho hei tangata ki te whenua.

Whakatupuranga atu, whakatupuranga mai, kua manarū i ngā Maunga te tini o tai tangata kua whati mai rā ki Tāmaki Makaurau.

He taonga ēnei wāhi hei taunga mō ngā mahi a te rēhia me te huritao i runga i te mārie.

He tohu nui whakaharahara ki Tāmaki Makaurau te whakaotinga o te whakataunga Tiriti a Tāmaki Collective i te marama o Hūrae, i te tau 2014:

- Ka whakahokia ngā Tūpuna Maunga ki ngā iwi me ngā hapū 13 o Ngā Mana Whenua o Tāmaki Makaurau – ki ngā kāhui iwi o Marutūāhu, o Ngāti Whātua me Te Waiohau; ā
- Ka whakatūria ko Te Uepū o ngā Tūpuna Maunga – te rōpū hautū-takirua ā-ture e taurite nei te mana o ngā Mana Whenua ki tō Te Kaunihera o Tāmaki Makaurau.

Nā te manaakitanga a ngā iwi o Tāmaki Makaurau, i tā rātou whakataunga Tiriti e wātea nei hoki ngā Tūpuna Maunga ki ngā tāngata katoa. Kua rangatira a Tāmaki Makaurau nā te maiohatanga anō o ēnei horanuku tūpuna.

Kua oti kē ētehi whāinga whakahirahira te whakarite i Te Uepū o ngā Tūpuna Maunga e hāngai ana ki te whakakitenga pae-tawhiti ka heke iho i tēnā whakatupuranga ki tēnā whakatupuranga mō te haumanutanga o te Maunga: te tautapa i ngā Tūpuna Maunga hei wāhi auahi kore me te waipiro kore; te ngaki i ngā tarutaru me te kawhaki i ngā kīrearea, te huri i te tihi o Maungawhau hei papa mō te kaiwaewae, me te whakatō rākau ki te tihi o Maungakiekie.

Ko tētehi atu hua tāpua kua puta, ko te whakawhakaritenga o tētehi Mahere Whakahaere Pāhekoheko, te horopaki o te kaupapa here matua e pā ana ki ngā Tūpuna Maunga. E takoto ana i te mahere ngā tirohanga kanorau e kaha ake ai te hononga o te hunga e noho ana ki Tāmaki Makaurau ki ēnei horanuku whakamāharo. Ka tau i te mahere te tūāpapa o te āhua e kaingākauatia ai, e haumanutia ai, e tiakina ai, e whakahaeretia ai hoki ngā Tūpuna Maunga.

He mea nui kia mihia ngā mema tuatahi o Te Uepū o ngā Tūpuna Maunga nā rātou nei i ārahi, i ahuahu ngā mahi o tēnei kōtuinga hautū-takirua e auaha ana.

Kotahi tonu te kaupapa kei tō mātou rōpū – ko ngā Tūpuna Maunga.

Nā
Paul F Majurey

Te Kaihautū o Te Uepū o ngā Tūpuna Maunga





**If the Maunga are well,
Tāmaki Makaurau is well**



CHAIR'S INTRODUCTION

Whanaungatanga (kinship) is at the heart of the Māori world view.

The connections between people, and the broad web of human relationships with the natural and spiritual worlds are all bound together through whakapapa (genealogy).

The mauri (life force) of people is intimately linked to the mauri of the environment through ancestral connections.

This is why Māori refer to mountains and other iconic landscape features in the same way they refer to humans, and why elders feel comfortable speaking directly to them.

The Tūpuna Maunga (ancestral mountains) of Tāmaki Makaurau are fundamental to the identity of Mana Whenua and are at the heart of Auckland's local and international identity. Their names and landscapes invoke the memory of the ancestors and significant tribal events. These taonga tuku iho (treasures handed down the generations) anchor us as people to the land.

The Maunga have captivated the many waves of peoples who have come to Tāmaki Makaurau over the generations.

They are treasured places for peaceful enjoyment and reflection.

The completion of the Tāmaki Collective Treaty settlement in July 2014 was a landmark milestone for Auckland:

- The Tūpuna Maunga were returned to the 13 iwi/hapū of Ngā Mana Whenua o Tāmaki Makaurau (the Mana Whenua tribes of Auckland) – the tribes who comprise the related collective groupings of Marutūāhu, Ngāti Whātua and Te Waiohū; and
- The Tūpuna Maunga Authority was established - the statutory co-governance table where Mana Whenua and Auckland Council sit as equals.

It was through the manaakitanga (care and generosity) of the Auckland tribes with their Treaty settlement that the Tūpuna Maunga have been shared with all peoples. Tāmaki Makaurau is enriched by the renewed appreciation of these ancestral landscapes.

Important steps have already been made by the Tūpuna Maunga Authority towards the long term intergenerational vision for the restoration of the Maunga: declaring the Tūpuna Maunga smoke and alcohol free spaces; significant weed and pest removals, pedestrianisation of the tihi of Maungawhau/Mt Eden and planting of trees on the tihi (summit) of Maungakiekie/One Tree Hill.

Another significant outcome has been producing the Integrated Management Plan, the principal policy setting for the Tūpuna Maunga. The plan acknowledges the diverse worldviews that add richness to the relationship Aucklanders have with these remarkable landscapes. It sets the foundation for how the Tūpuna Maunga are valued, restored, protected and managed.

It is important to acknowledge the inaugural members of the Tūpuna Maunga Authority who have led and shaped the work of this groundbreaking co-governance partnership.

At our table, there is a single kaupapa - the Tūpuna Maunga.

Paul F Majurey

Chair, Tūpuna Maunga Authority





MESSAGE FROM THE DEPUTY CHAIR

The Tūpuna Maunga of Tāmaki Makaurau / Auckland are a source of pride and pleasure for residents and visitors. We are blessed to live in a city with such a wonderful natural environment, surrounded by maunga that provide us with natural havens in our energetic and vibrant city.

The Maunga Authority members have brought our different backgrounds and perspectives to the important work of caring for, protecting and enhancing these important taonga. The Integrated Management Plan, which sets the direction for the future management of the Tūpuna Maunga, is the culmination of our journey to date.

Future individual maunga plans will provide an opportunity for us to work closely with the Local Boards and diverse communities to produce plans that capture and enhance the unique qualities of each maunga.

The Integrated Management Plan invites us to rediscover our maunga, appreciate them in new ways, and to preserve them for those who follow after us. It has been a pleasure to work with the Maunga Authority members and community to develop the values and pathways that set the direction for the care of the maunga in years to come.

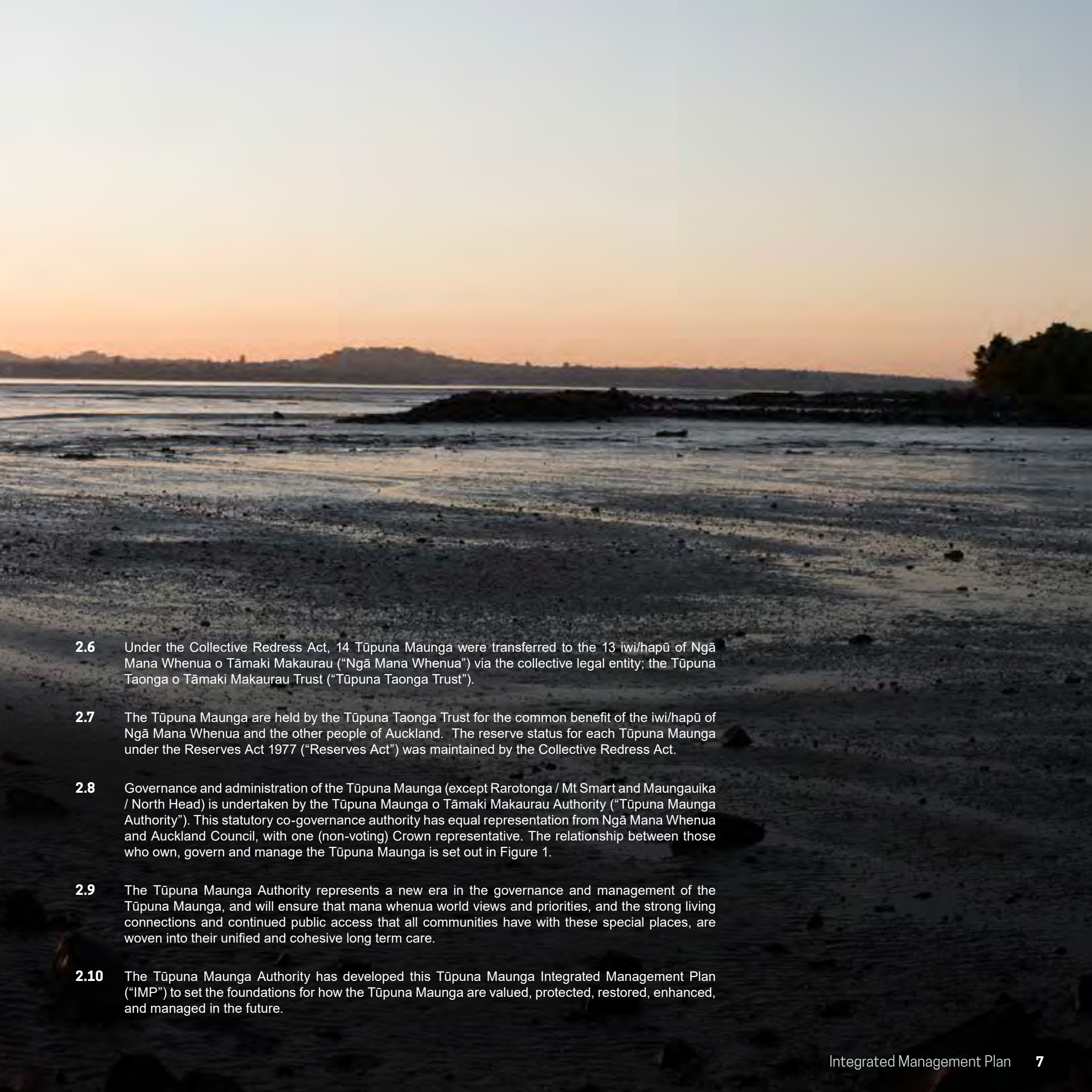
Hon Christine Fletcher QSO

Deputy Chair, Tūpuna Maunga Authority



2. INTRODUCTION

- 2.1** Tāmaki Makaurau / Auckland has a powerful physical presence. Its shape and form reflects an active volcanic field setting, with the most recent eruption occurring at Rangitoto some 600 years ago.
- 2.2** The volcanic features of Tāmaki have shaped the lives of its people. Māori settled and established pā, kāinga and extensive cultivations in and around the maunga over the centuries with later waves of migration coming to Auckland to forge new lives in Aotearoa.
- 2.3** The Tūpuna Maunga (ancestral mountains) of Tāmaki stand as the essence of Auckland. They are central to Auckland's identity and a point of difference around the world. Human occupation of Auckland spans around 1,000 years, and over that time the interaction of people with the maunga has changed from monumental and defensible settlements, to strategic maritime locations and resources (rock and water), through to an unparalleled network of open spaces that all Aucklanders draw a sense of identity from.
- 2.4** The Tūpuna Maunga were held in Crown ownership, having various reserve classifications (recreation, historic, local purpose), and were managed by Auckland Council (and the legacy councils prior to amalgamation in 2010) and the Department of Conservation (in the case of Matukutururu / Wiri Mountain and Maungauika / North Head).
- 2.5** In 2014, following five years of Te Tiriti o Waitangi/Treaty of Waitangi settlement negotiations, the Ngā Mana Whenua o Tāmaki Makaurau Collective Redress Act 2014 ("Collective Redress Act") legislated the Collective deed of settlement.

- 
- 2.6** Under the Collective Redress Act, 14 Tūpuna Maunga were transferred to the 13 iwi/hapū of Ngā Mana Whenua o Tāmaki Makaurau (“Ngā Mana Whenua”) via the collective legal entity; the Tūpuna Taonga o Tāmaki Makaurau Trust (“Tūpuna Taonga Trust”).
- 2.7** The Tūpuna Maunga are held by the Tūpuna Taonga Trust for the common benefit of the iwi/hapū of Ngā Mana Whenua and the other people of Auckland. The reserve status for each Tūpuna Maunga under the Reserves Act 1977 (“Reserves Act”) was maintained by the Collective Redress Act.
- 2.8** Governance and administration of the Tūpuna Maunga (except Rarotonga / Mt Smart and Maungauika / North Head) is undertaken by the Tūpuna Maunga o Tāmaki Makaurau Authority (“Tūpuna Maunga Authority”). This statutory co-governance authority has equal representation from Ngā Mana Whenua and Auckland Council, with one (non-voting) Crown representative. The relationship between those who own, govern and manage the Tūpuna Maunga is set out in Figure 1.
- 2.9** The Tūpuna Maunga Authority represents a new era in the governance and management of the Tūpuna Maunga, and will ensure that mana whenua world views and priorities, and the strong living connections and continued public access that all communities have with these special places, are woven into their unified and cohesive long term care.
- 2.10** The Tūpuna Maunga Authority has developed this Tūpuna Maunga Integrated Management Plan (“IMP”) to set the foundations for how the Tūpuna Maunga are valued, protected, restored, enhanced, and managed in the future.

2.11 The IMP:

- a. outlines the Tūpuna Maunga Authority's long-term vision for the Tūpuna Maunga;
- b. sets the direction for the protection, restoration, enhancement and appropriate use of the Tūpuna Maunga; and
- c. replaces the former separate legacy reserve management plans for the Tūpuna Maunga;
- d. has been developed in accordance with Section 41 of the Reserves Act to provide for and ensure the use, enjoyment, maintenance, protection, preservation, and development as appropriate for the reserve purposes for which each of the Tūpuna Maunga is classified.

2.12 The Tūpuna Maunga are among the most significant spiritual, cultural, historical, archaeological and geological landscapes in the Auckland region. The Tūpuna Maunga are sacred to mana whenua as taonga tuku iho (treasures handed down the generations). Ngā Mana Whenua therefore secured the statutory requirement for an IMP to ensure the future of each of these treasured places will be organised with equal consideration and reverence.

2.13 The IMP provides background to the origins of the volcanic field and influence of human interaction over the waves of migration. The place names given to the Tūpuna Maunga reflect their physical features and biodiversity. The Tūpuna Maunga have nurtured the peoples of Auckland over the centuries by providing significant resources. The Tūpuna Maunga were central to the daily lives of the tribes of Tāmaki as places of habitation, rituals of daily life and worship, the cultivation of food, and at times warfare. The tangible inscriptions of the tūpuna (ancestors) remain as seen, for example, in the modified terraced fortified pā, cultivated areas and stone features.

2.14 European settlement brought a focus on the Tūpuna Maunga as foundation resources to support the creation of the city. Significant amounts of volcanic rock (volcanic basalt and scoria) were quarried which destroyed or led to the significant modification of some maunga. Coastal defenses, infrastructure, reservoirs and houses were also built on the maunga. These types of modifications, structures and activities have all left their mark on the maunga.

2.15 The Tūpuna Maunga have come to be treasured and celebrated by all communities for their striking landscape and heritage features, the distinct identity and sense of place they inspire and for their value as open spaces where all Aucklanders can be active, seek respite, relax and escape from busy urban lives.

2.16 The IMP sets out Values and Pathways to achieve the integrated outcomes for all the Tūpuna Maunga:

- a. The Values provide the tika (correct) framework for the care and protection of the Tūpuna Maunga.
- b. The Pathways elaborate and give tangible expression to the Values. They are guiding principles and objectives that set the direction for the Tūpuna Maunga Authority to protect and care for the Tūpuna Maunga and provide a crucial framework for decision-making.
- c. The Values and Pathways will be delivered through the methods set out in section 10.

2.17 The Values are:

Wairuatanga / Spiritual
Mana Aotūroa / Cultural and Heritage
Takotoranga Whenua / Landscape
Mauri Pūnaha Hauropi / Ecology and Biodiversity
Mana Hononga Tangata / Living Connection
Whai Rawa Whakauka / Economic and Commercial
Mana Whai a Rēhia / Recreational

FIGURE 1

Tūpuna Maunga o Tāmaki Makaurau Ownership - Governance - Management

14 Tūpuna Maunga

Tūpuna Taonga o Tāmaki Makaurau Trust

Tūpuna Maunga vested in the Trust on behalf of Ngā Mana Whenua o Tāmaki Makaurau

Ngā Mana Whenua o Tāmaki Makaurau

13 iwi/ hapū of Tāmaki Makaurau having three rūpū:

Marutūāhu Rūpū

Ngāti Whātua Rūpū

Waiohū-Tāmaki Rūpū

Tūpuna Maunga o Tāmaki Makaurau Authority

Independent statutory authority that administers the Tūpuna Maunga for the common benefit of the iwi and hapū of Ngā Mana Whenua o Tāmaki Makaurau and the people of Auckland

6 Ngā Mana Whenua members
(Two representatives from each rūpū)

6 Auckland
Council members

One non-voting Crown member

Auckland Council

Routine management of
Tūpuna Maunga

Administrative support to
Authority

- 2.18** The IMP will be implemented in a phased manner, which includes the preparation of overarching guidelines and strategies for all Tūpuna Maunga.
- 2.19** In addition, there will be individual Tūpuna Maunga Plans reflecting the Values and Pathways, overarching guidelines and strategies for each of the Tūpuna Maunga. These plans will detail the care and management of each Tūpuna Maunga. These plans will detail the care and management of each Tūpuna Maunga. The relationship between the IMP, overarching guidelines and strategies, and the Individual Tūpuna Maunga Management Plans is set out in Figure 2.
- 2.20** The Tūpuna Maunga Authority will confirm the public engagement processes for development of the strategies, guidelines and Tūpuna Maunga Plans and they will form part of the IMP as adopted by the Tūpuna Maunga Authority.
- 2.21** This IMP and the subsequent companion strategies, guidelines and Tūpuna Maunga Plans will be implemented through the annual Tūpuna Maunga Operational Plan.
- 2.22** The Tūpuna Maunga Authority will monitor, report and review the progress and effectiveness of these strategies, guidelines and Tūpuna Maunga Plans in achieving the Values of the IMP.
- 2.23** A glossary of terms used is included in Appendix 1.

FIGURE 2 INTEGRATED MANAGEMENT PLAN FRAMEWORK

Tūpuna Maunga Integrated Management Plan

Tūpuna
Maunga
Design
Guidelines

Tūpuna
Maunga
Recreation
Strategy

Tūpuna
Maunga Pest
Management
and Biosecurity
Strategy

Tūpuna
Maunga
Biodiversity
Strategy

Tūpuna Maunga
Communication,
Signage and
Education
Strategy

Tūpuna
Maunga
Commercial
Strategy

Tūpuna
Maunga
Monitoring
Strategy

Individual Tūpuna Maunga Management Plans

Matukutūruru /
Wiri Mountain

Maungakiekie /
One Tree Hill

Maungarei /
Mt Wellington

Maungauika /
North Head

Maungawhau /
Mt Eden

Ōhinerau /
Mt Hobson

Ōhūiarangi /
Pigeon Mountain

Ōtāhuhu /
Mt Richmond

Ōwairaka /Te Ahi-kā-a-Rakataura /
Mt Albert

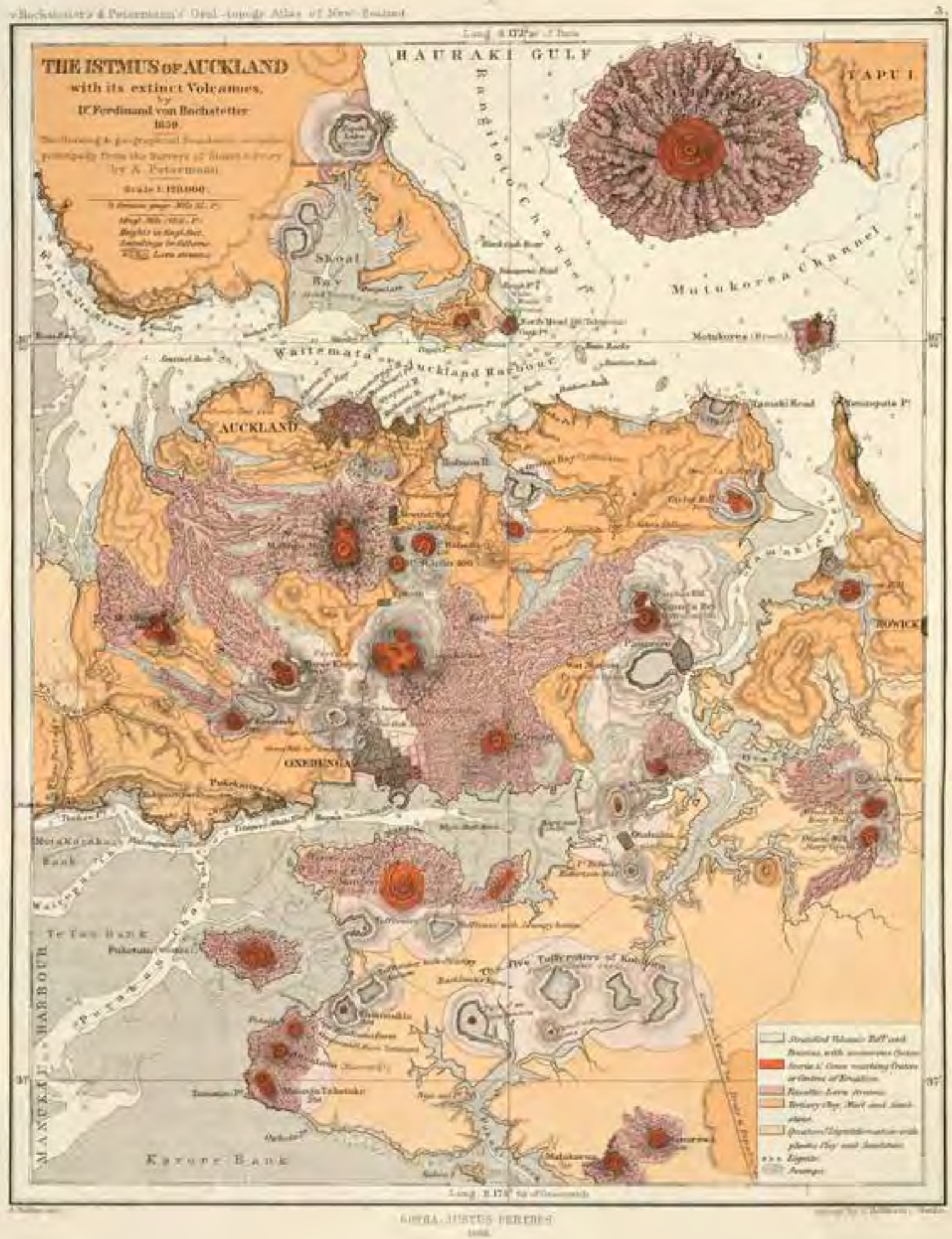
Puketāpapa / Pukewīri /
Mt Roskill

Takarunga /
Mt Victoria

Te Ara Puera / Te Pane-o-Mataaho /
Mangere Mountain

Te Kōpuke /Titikōpuke /
Mt St John

Te Tātua a Riukiuta /
Big King



3. TĀMAKI MAKĀURAU – THE ORIGINS

- 3.1** The explosion volcanic craters of Tāmaki Makaurau are known by mana whenua by various names, including the footprints of the atua (god) Mataaho (the god of volcanic forces).
- 3.2** In the mists of ancient time, the famous tūpuna Māui Tikitiki a Taranga hauled the great fish, Te Ika a Māui (North Island) from the depths of Te Moana Nui a Kiwa (Pacific Ocean). The body of Māui's fish settled on the surface of the ocean, with part of it forming the Auckland region. Māui's brothers proceeded to beat the huge fish in order to subdue it and claim the most prized portions for themselves.
- 3.3** Their strenuous efforts left Auckland as a narrow, undulating landmass lying between two great oceans. The scales of Māui's fish were scattered, forming the larger offshore islands like Hauturu (Little Barrier Island). Into the wounds of Te Ika a Māui poured the surrounding sea. Thus, the land and sea became interwoven, giving Auckland its pervasive maritime character. Māui and his family are forever preserved as islands in Tīkapa Moana / Hauraki Gulf.
- 3.4** Over the millennia, the ātua of the Māori pantheon continued to shape and modify this new land. The wrath of Mataaho flowed from deep under the earth creating Auckland's distinctive volcanic landscape, and the children of Tāne Mahuta (god of land, water bodies and animals / plants) clothed the land, bringing the ecological diversity for which the region is renowned.
- 3.5** The Tūpuna Maunga o Tāmaki Makaurau hold a paramount place in the historical, spiritual, ancestral and cultural identity of mana whenua, and define Auckland's identity and place.



4. TĀMAKI MAKĀURAU – THE PEOPLE

MANA WHENUA

- 4.1** The human occupation of Tāmaki Makaurau spans around 1,000 years. The tūpuna of the Māori people travelled here from Hawaiiki in the Pacific via ancestral kaitiaki (in the form of marine mammals and birds) and waka. The early peoples settled along the shores of the Manukau and Waitematā Harbours. Over the centuries there were several great tribal migrations into the region, including the iwi/hapū of Marutūāhu, Ngāti Whātua and Waiohua -Tāmaki.
- 4.2** The Tūpuna Maunga were strategically important areas. Pā were built on high ground with palisaded fortresses ringed with (still visible) terraces supporting housing, storage pits and large gardens which extended onto the surrounding fertile soils. History records the various battles and strategic alliances as various tribes sought influence over Tāmaki. The maunga were also places of unity and connection with births and marriages taking place on them, as well as being places of interment.

NINETEENTH CENTURY

- 4.3** European settlers were also attracted to the Tūpuna Maunga, with warm northern slopes particularly favoured for housing.
- 4.4** The volcanic cones were seen as an accessible source of volcanic rock for construction, with volcanic basalt and scoria being quarried for buildings, walls, railway lines and roads. The wider volcanic field also provided a valuable water resource and several maunga had bores and water supply reservoirs installed.
- 4.5** The strategic coastal location of Maungauika and Takarunga led to their use as significant military installations. During the 1880s, a potential Russian invasion led to Maungauika being developed with fort, gun batteries and tunnels. This set a military platform for later development which occurred during both world wars, in the form of ordinance storage, tunnel networks and defence structures. Both maunga were also utilised as signal and pilot stations for shipping services.
- 4.6** While the lava fields and lower slopes were generally built on, some of the upper slopes of the Tūpuna Maunga were set aside as reserves, and lower slopes used for recreation areas.





TĀMAKI MAKAUURAU TODAY

- 4.7** Tāmaki Makaurau is a globally significant city remarkable for its natural landscape, urban centres distributed across a young volcanic field, and maritime dominance.
- 4.8** Auckland is the nation's largest city with a current population of over 1.4 million; around one-third of the national total. Auckland also represents around one-third of the national Gross Domestic Product. The forecasts are for those two key indicators to reach the 50% mark well before 2100.
- 4.9** It is the fastest growing and most ethnically diverse region in the country with 11% of the population identified as Māori, 15% identified as Pacific and 23% identified as Asian.
- 4.10** The Tūpuna Maunga are revered by all peoples for their multiple layers of cultural, natural and built heritage. As Auckland continues to grow and intensify, the Tūpuna Maunga are increasingly important as spiritual and aesthetic anchors for all Auckland communities, and as valuable open spaces and places of refuge in an urban landscape. They will continue to be celebrated, treasured and valued for their defining heritage features and importance in shaping the character and identity of Tāmaki Makaurau.
- 4.11** Auckland's key point of difference in the world is its unique Māori identity, with the Tūpuna Maunga being a tangible reminder of mana whenua occupation of Auckland over a millennia.
- 4.12** It is for these reasons that the Tūpuna Maunga Authority supports progressing the bid for World Heritage inscription of the Tūpuna Maunga (as part of the Auckland Volcanic Field).



Chris Gaskin Painting, Auckland Regional Council



5. NGĀ MANA WHENUA O TĀMAKI MAKĀURAU COLLECTIVE REDRESS

NGĀ MANA WHENUA O TĀMAKI MAKĀURAU

5.1 Ngā Mana Whenua o Tāmaki Makaurau (Ngā Mana Whenua) comprises the following 13 iwi/hapū of Auckland:

- Ngāi Tai ki Tāmaki
- Ngāti Maru
- Ngāti Pāoa
- Ngāti Tamaoho
- Ngāti Tamaterā
- Ngāti Te Ata
- Ngāti Whanaunga
- Ngāti Whātua o Kaipara
- Ngāti Whātua Ōrākei
- Te Ākitai Waiohū
- Te Kawerau ā Maki
- Te Patukirikiri
- hapū of Ngāti Whātua (other than Ngāti Whātua o Kaipara and Ngāti Whātua Ōrākei) whose members are beneficiaries of Te Rūnanga o Ngāti Whātua, including Te Taoū not descended from Tuperiri.

NGĀ MANA WHENUA O TĀMAKI MAKĀURAU DEED OF SETTLEMENT 2012

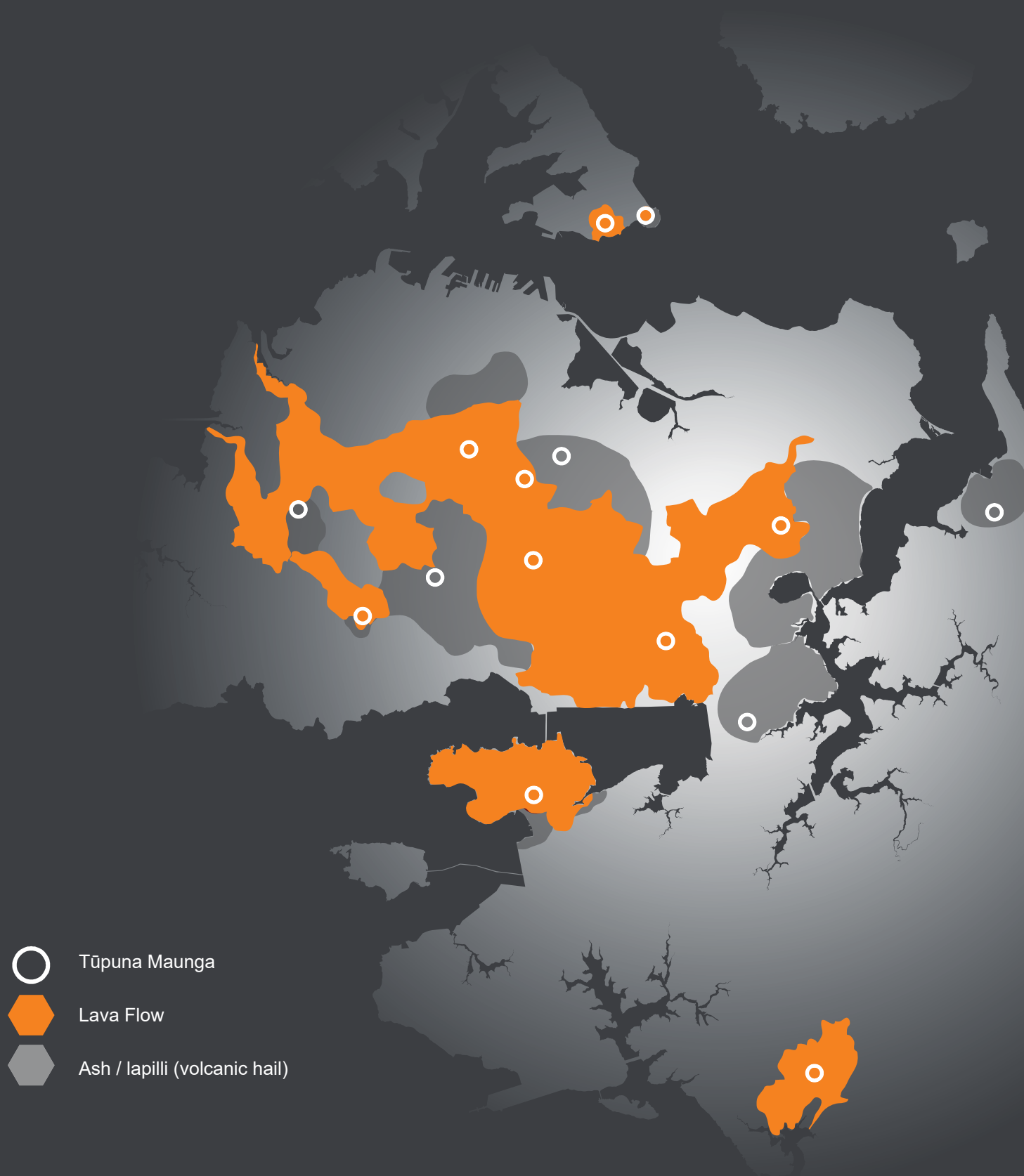
5.2 Treaty settlement negotiations between the Crown and Ngā Mana Whenua commenced in July 2009, and the Ngā Mana Whenua o Tāmaki Makaurau Collective Redress Deed (“Collective Redress Deed”) was signed in September 2012. The Ngā Mana Whenua Collective Treaty settlement is a significant and historical milestone for Auckland.

5.3 The shared redress agreed in the collective deed of settlement includes:

- a. Restoring ownership of 14 Tūpuna Maunga and five motu (islands) to the 13 tribes, the maunga and motu being treasured sources of mana to the iwi/hapū;
- b. Providing mechanisms by which the tribes exercise mana whenua and kaitiakitanga over the maunga and motu; and
- c. Providing a first right of refusal regime in respect of land of Tāmaki Makaurau to enable the 13 iwi/hapū to build an economic base for their members.

5.4 The Crown expressly recognised in the deed that the 13 iwi/hapū of Auckland have legitimate spiritual, ancestral, cultural, customary and historical interests in the Tūpuna Maunga. The Crown also recognised that the maunga are taonga to which the iwi/hapū have always maintained a unique relationship and the settlement honours their intergenerational role as kaitiaki.

LOCATIONS OF TŪPUNA MAUNGA, LAVA AND ASH FLOW IN TĀMAKI MAKAUURAU



NGĀ MANA WHENUA O TĀMAKI MAKĀURAU COLLECTIVE REDRESS ACT 2014

5.5 The Collective Redress Act 2014 legislated the collective deed of settlement, and came into effect on 29 August 2014.

TŪPUNA MAUNGA REDRESS

5.6 Under the Collective Redress Act, the following 14 Tūpuna Maunga were transferred from the Crown to the 13 iwi/hapū of Ngā Mana Whenua via the collective’s legal entity, the Tūpuna Taonga o Tāmaki Makaurau Trust:

- Matukutūruru
- Maungakiekie / One Tree Hill
- Maungarei / Mount Wellington
- Maungauika
- Maungawhau / Mount Eden
- Mount Albert
- Mount Roskill
- Mount St John
- Ōhinerau / Mount Hobson
- Ōhūiarangi / Pigeon Mountain
- Ōtāhuhu / Mount Richmond
- Rarotonga / Mount Smart
- Takarunga / Mount Victoria
- Te Tātua a Riukiuta

5.7 Under the Collective Redress Deed and Collective Redress Act, the iwi/hapū of Ngā Mana Whenua having spiritual, ancestral, cultural, customary, and historical interests in the various Tūpuna Maunga are recorded in the related property title documentation.

5.8 The Tūpuna Taonga Trust owns the Tūpuna Maunga on trust for the common benefit of the 13 iwi/hapū of Ngā Mana Whenua and the other people of Auckland.

5.9 The reserve status for each of the Tūpuna Maunga under the Reserves Act was maintained by the Collective Redress Act.

5.10 There are alternative ownership, governance and/or management arrangements in relation to the following maunga:

- Maungauika / North Head – vested in the Tūpuna Taonga Trust, and currently administered by the Crown (Department of Conservation) until such time as and when an Order in Council is made that transfers administration to the Tūpuna Maunga Authority.
- Rarotonga / Mount Smart – vested in the Tūpuna Taonga Trust and administered by Auckland Council (Regional Facilities Auckland) under the Mount Smart Regional Recreation Centre Act 1985 and Reserves Act.
- Maungakiekie / One Tree Hill northern land – ownership of the land remains with the Crown, and it is administered by the Tūpuna Maunga Authority under the Collective Redress Act and Reserves Act. This is one of the maunga areas included in the ‘administered lands’ regime under the Collective Redress Act.
- Te Ara Pueru / Te Pane-o-Mataaho / Māngere Mountain – ownership of the land remains with the Crown, and is administered by the Tūpuna Maunga Authority under the Collective Redress Act and Reserve Act. This is one of the maunga areas included in the ‘administered lands’ regime under the Collective Redress Act.

LOCATIONS OF TŪPUNA MAUNGA



6. TŪPUNA MAUNGA O TĀMAKI MAKĀURAU

- 6.1 Aerial and photographic imagery for each of the Tūpuna Maunga, along with the respective iwi/hapū interests, legal boundaries, reserve classifications and current activities are shown in the following pages.
- 6.2 The Tūpuna Maunga Authority has undertaken a stock take of the activities, developments and management practices that currently occur on the Tūpuna Maunga and these are set out in Appendix 3.



MATUKUTŪRURU / WIRI MOUNTAIN

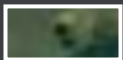
CURRENT ACTIVITIES
Cultural Activities

IWI /HAPŪ
WITH INTERESTS IN THE
MAUNGA

- Ngāi Tai ki Tāmaki
- Ngāti Maru
- Ngāti Tamaoho
- Ngāti Tamaterā
- Ngāti Te Ata
- Ngāti Whanaunga
- Ngāti Whātua Ōrākei
- Ngāti Whātua o Kaipara
- Te Ākitai Waiohua
- Te Kawerau ā Maki



Historic
Reserve




Legal
Boundary



Matukutūruru / Wiri Mountain, c. 1958 (Whites Aviation, University of Auckland)



Location Map  Matukutūruru / Wiri Mountain



MAUNGAKIEKIE / ONE TREE HILL



Recreation Reserve



Legal Boundary



Maungakiekie / One Tree Hill, c. 1930 (Whites Aviation, National Library of New Zealand)


CURRENT ACTIVITIES

Cultural Activities
Commercial activities
Residential tenancy activities
Community organised groups and education activities
Sports organised groups
Public car parking area
Public toilet facilities
Play ground
Above ground reservoirs and/or associated infrastructure
Underground reservoirs and/or associated infrastructure
Unrestricted public vehicle access to tihi
Dogs - Leashed
Grazing
Plaques / Monument

IWI / HAPŪ WITH INTERESTS IN THE MAUNGA

Ngāi Tai ki Tāmaki
Ngāti Maru
Ngāti Pāoa
Ngāti Tamaoho
Ngāti Tamaterā
Ngāti Te Ata
Ngāti Whanaunga
Ngāti Whātua Ōrākei
Ngāti Whātua Kaipara
Te Ākitai Waiohū
Te Kawerau ā Maki
Te Patukirikiri
Te Rūnanga o Ngāti Whātua



Location Map  Maungakiekie / One Tree Hill



MAUNGAREI / MOUNT WELLINGTON



Local Purpose Reserve



Recreation Reserve



Legal Boundary



Maungarei / Mount Wellington, c. 1899 (Hugh Boscawen Album – Te Papa Tongarewa on loan to Auckland War Memorial Museum)


CURRENT ACTIVITIES

- Cultural Activities
- Commercial activities
- Sports organised groups
- Public car parking area
- Underground reservoirs and/or associated infrastructure
- Trig station on tihi
- Unrestricted public vehicle access to tihi
- Dogs - Leashed
- Grazing
- Plaques

IWI / HAPŪ WITH INTERESTS IN THE MAUNGA

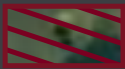
- Ngāi Tai ki Tāmaki
- Ngāti Maru
- Ngāti Pāoa
- Ngāti Tamaoho
- Ngāti Tamatera
- Ngāti Te Ata
- Ngāti Whanaunga
- Ngāti Whātua Ōrākei
- Ngāti Whātua o Kaipara
- Te Ākitai Waiohū
- Te Kawerau ā Maki
- Te Patukirikiri
- Te Rūnanga o Ngāti Whātua



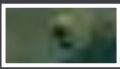
Location Map  Maungarei / Mount Wellington



MAUNGAUIKA / NORTH HEAD



Historic Reserve



Legal Boundary



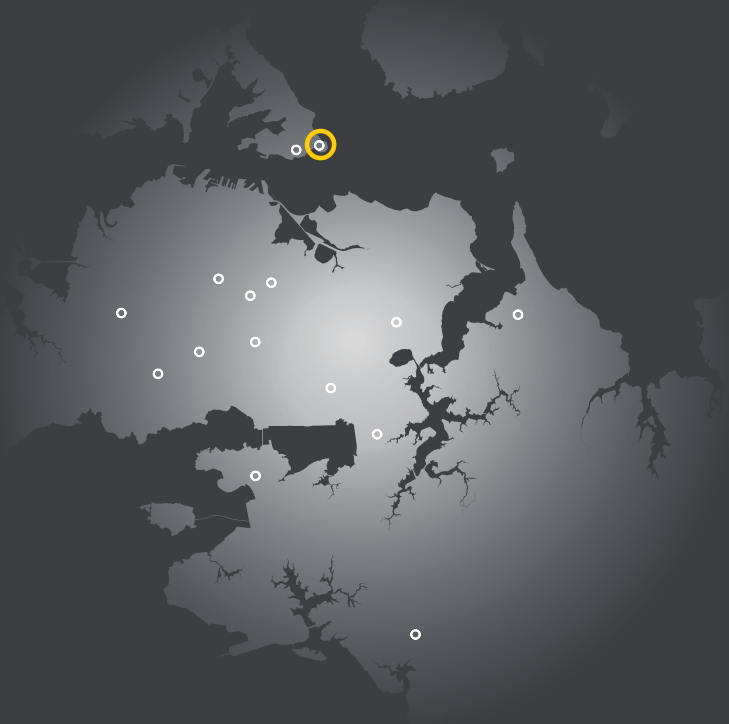
Maungauika/North Head, c. 1879 (Sir George Grey Special Collections, Auckland Libraries)

CURRENT ACTIVITIES

- Cultural Activities
- Guided Tours/Concessions
- Public car parking area
- Public toilet facilities
- Above ground pipelines and fittings for the conveyance of wastewater
- Dogs - Leashed
- Military structures

IWI /HAPŪ WITH INTERESTS IN THE MAUNGA

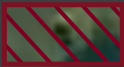
- Ngāi Tai ki Tāmaki
- Ngāti Maru
- Ngāti Pāoa
- Ngāti Tamaoho
- Ngāti Tamaterā
- Ngāti Te Ata
- Ngāti Whanaunga
- Ngāti Whātua Ōrākei
- Ngāti Whātua o Kaipara
- Te Ākitai Waiohūa
- Te Kawerau ā Maki
- Te Patukirikiri
- Te Rūnanga o Ngāti Whātua



Location Map  Maungauika / North Head



MAUNGAWHAU / MOUNT EDEN



Historic Reserve



Recreation Reserve



Legal Boundary

CURRENT ACTIVITIES

- Cultural Activities
- Residential tenancy activities
- Community organised groups and education activities
- Open air stage / platform
- Public car parking areas
- Public toilet facilities
- Play ground
- Underground reservoirs and/or associated infrastructure
- Trig station on tihi
- Unrestricted public vehicle access to tihi
- Dogs - Leashed
- Dogs - Unleashed
- Plaques and Monument

IWI / HAPŪ WITH INTERESTS IN THE MAUNGA

- Ngāi Tai ki Tāmaki
- Ngāti Maru
- Ngāti Pāoa
- Ngāti Tamaoho
- Ngāti Tamaterā
- Ngāti Te Ata
- Ngāti Whanaunga
- Ngāti Whātua Ōrākei
- Ngāti Whātua o Kaipara
- Te Ākitai Waiohū
- Te Kawerau ā Maki
- Te Patukirikiri
- Te Rūnanga o Ngāti Whātua



Maungawhau/ Mount Eden, c. 1914 (Price, William Archer 1866-1948, National Library of New Zealand)



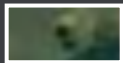
Location Map  Maungawhau/ Mount Eden



ŌHINERAU / MOUNT HOBSON



Recreation Reserve



Legal Boundary



Ōhinerau / Mount Hobson, c. 1899 (Hugh Boscawen Album – Te Papa Tongarewa on loan to Auckland War Memorial Museum)


CURRENT ACTIVITIES

- Cultural Activities
- Above ground reservoirs and/or associated infrastructure
- Underground reservoirs and/or associated infrastructure
- Trig station on tihi
- Dogs - Leashed
- Memorials

IWI / HAPŪ WITH INTERESTS IN THE MAUNGA

- Ngāi Tai ki Tāmaki
- Ngāti Maru
- Ngāti Tamaoho
- Ngāti Tamaterā
- Ngāti Te Ata
- Ngāti Whanaunga
- Ngāti Whātua Ōrākei
- Ngāti Whātua o Kaipara
- Te Ākitai Waiohū
- Te Kawerau ā Maki
- Te Patukirikiri
- Te Rūnanga o Ngāti Whātua



Location Map  Ōhinerau / Mount Hobson



ŌHUIARANGI / PIGEON MOUNTAIN



Ōhuiarangi / Pigeon Mountain, c. 1972 (Howick Historical Village)


CURRENT ACTIVITIES

- Cultural Activities
- Community organised groups and education activities
- Sports organised groups
- Public car parking areas
- Public toilet facilities
- Sports fields
- Above ground reservoirs and/or associated infrastructure
- Above ground pipelines and fittings for the conveyance of water, wastewater and/or stormwater
- Trig station on tihi
- Dogs - Leashed

IWI / HAPŪ WITH INTERESTS IN THE MAUNGA

- Ngāi Tai ki Tāmaki
- Ngāti Maru
- Ngāti Tamaoho
- Ngāti Tamaterā
- Ngāti Te Ata
- Ngāti Whanaunga
- Ngāti Whātua Ōrākei
- Ngāti Whātua o Kaipara
- Te Ākitai Waiohūa
- Te Kawerau ā Maki
- Te Patukirikiri



Location Map  Ōhuiarangi / Pigeon Mountain



ŌTĀHUHU / MOUNT RICHMOND



Recreation Reserve



Legal Boundary

CURRENT ACTIVITIES

- Cultural Activities
- Sports organised groups
- Public car parking areas
- Public toilet facilities
- Sports fields
- Play grounds
- Above ground reservoirs and/or associated infrastructure
- Trig station on tihi
- Dogs - Leashed
- Grazing


IWI / HAPŪ WITH INTERESTS IN THE MAUNGA

- Ngāi Tai ki Tāmaki
- Ngāti Maru
- Ngāti Pāoa
- Ngāti Tamaoho
- Ngāti Tamaterā
- Ngāti Te Ata
- Ngāti Whanaunga
- Ngāti Whātua Ōrākei
- Ngāti Whātua o Kaipara
- Te Ākitai Waiohūa
- Te Kawerau ā Maki
- Te Patukirikiri
- Te Rūnanga o Ngāti Whātua



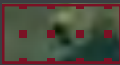
Ōtāhuhu/ Mount Richmond, c.1899 (Hugh Boscawen Album – Te Papa Tongarewa on loan to Auckland War Memorial Museum)



Location Map  Ōtāhuhu/ Mount Richmond



ŌWAIRAKA / TE AHI-KĀ-A-RAKATAURA / MOUNT ALBERT



Recreation Reserve



Legal Boundary



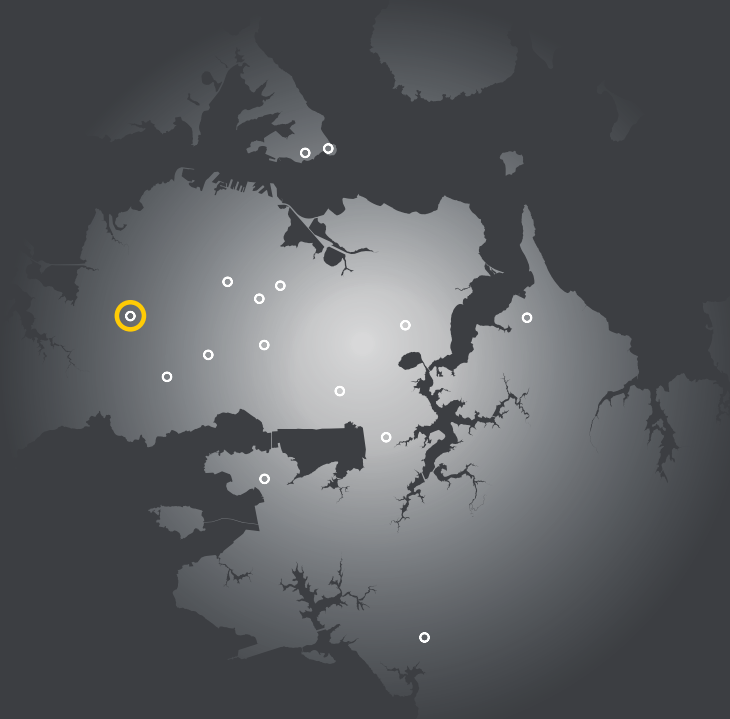
Ōwairaka / Te Ahi-kā-a-Rakataura / Mount Albert, c. 1890s (Sir George Grey Special Collections, Auckland Libraries)

CURRENT ACTIVITIES

- Cultural Activities
- Sports organised groups
- Public car parking areas
- Public toilet facilities
- Sports fields
- Underground reservoirs and/or associated infrastructure
- Trig station on tihi
- Unrestricted public vehicle access to tihi
- Dogs - Leashed
- Dogs - Unleashed
- Plaque

IWI /HAPŪ WITH INTERESTS IN THE MAUNGA

- Ngāi Tai ki Tāmaki
- Ngāti Maru
- Ngāti Pāoa
- Ngāti Tamaoho
- Ngāti Tamaterā
- Ngāti Te Ata
- Ngāti Whātua Ōrākei
- Ngāti Whātua o Kaipara
- Te Ākitai Waiohūa
- Te Kawerau ā Maki
- Te Rūnanga o Ngāti Whātua



Location Map  Ōwairaka / Te Ahi-kā-a-Rakataura / Mount Albert



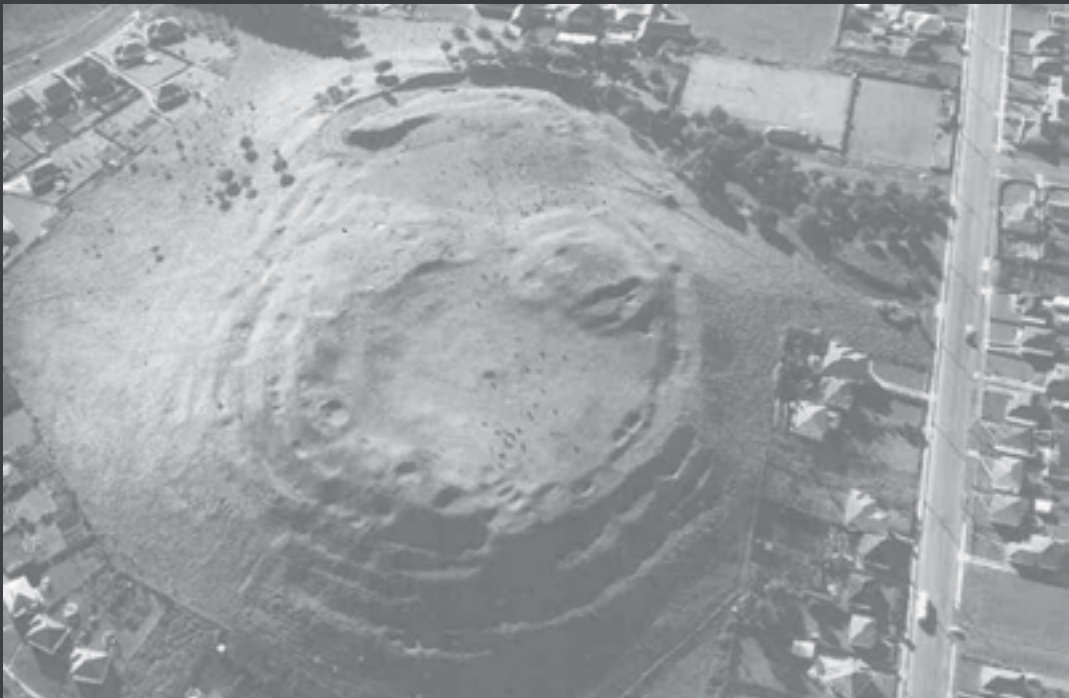
PUKETĀPAPA / PUKEWĪWĪ / MOUNT ROSKILL



Recreation Reserve



Legal Boundary



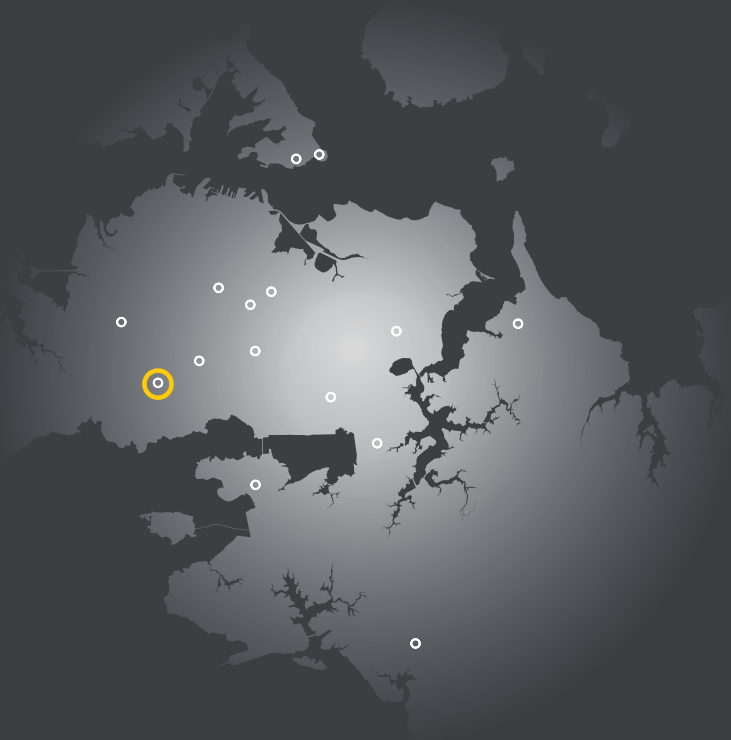
Puketāpapa / Pukewīwī / Mount Roskill, c. 1958 (Whites Aviation, National Library of New Zealand)


CURRENT ACTIVITIES

- Cultural Activities
- Public car parking area
- Underground reservoir and/or associated infrastructure
- Unrestricted public vehicle access to tihi
- Dogs - Leashed

IWI /HAPŪ WITH INTERESTS IN THE MAUNGA

- Ngāi Tai ki Tāmaki
- Ngāti Maru
- Ngāti Tamaoho
- Ngāti Tamaterā
- Ngāti Te Ata
- Ngāti Whātua Ōrākei
- Ngāti Whātua o Kaipara
- Te Ākitai Waiohua
- Te Kawerau ā Maki
- Te Rūnanga o Ngāti Whātua



Location Map  Puketāpapa / Pukewīwī / Mount Roskill



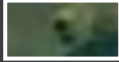
TAKARUNGA / MOUNT VICTORIA



Local Purpose Reserve



Recreation Reserve



Legal Boundary



Takarunga / Mount Victoria, c. 1945 (Whites Aviation, National library of New Zealand)

CURRENT ACTIVITIES

- Cultural Activities
- Community organised groups and education activities
- Public car parking area
- Tennis court
- Underground reservoir and/or associated infrastructure
- Signal station (Ports of Auckland)
- Trig station on tihi
- Unrestricted public vehicle access to tihi
- Dogs - Leashed
- Military structures
- Memorial and Plaques

IWI / HAPŪ WITH INTERESTS IN THE MAUNGA

- Ngāi Tai ki Tāmaki
- Ngāti Maru
- Ngāti Pāoa
- Ngāti Tamaoho
- Ngāti Tamaterā
- Ngāti Te Ata
- Ngāti Whanaunga
- Ngāti Whātua Ōrākei
- Ngāti Whātua o Kaipara
- Te Ākitai Waiohūa
- Te Kawerau ā Maki
- Te Patukirikiri
- Te Rūnanga o Ngāti Whātua



Location Map  Takarunga / Mount Victoria



TE ARA PUERU / TE PANE -O- MATAAHO / MĀNGERE MOUNTAIN



Te Ara Pueru / Te Pane -o- Mataaho / Māngere Mountain, c. 1899 (Hugh Boscawen Album – Te Papa Tongarewa on loan to Auckland War Memorial Museum)

CURRENT ACTIVITIES	IWI /HAPŪ WITH INTERESTS IN THE MAUNGA
Cultural Activities	Ngāi Tai ki Tāmaki
Community organised groups and education activities	Ngāti Maru
Sports organised groups	Ngāti Tamaoho
Public car parking area	Ngāti Tamaterā
Public toilet facilities	Ngāti Te Ata
Sports fields	Ngāti Whātua Orākei
Play grounds	Ngāti Whātua o Kaipara
Community hall	Te Ākitai Waiohūa
Trig stations on tihi	Te Kawerau ā Maki
Dogs - Leashed	Te Patukirikiri
Grazing	
Plaques	

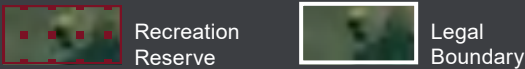


Location Map  Te Ara Pueru / Te Pane -o- Mataaho / Māngere Mountain




TE KŌPUKE / TĪTĪKŌPUKE / MOUNT ST JOHN

CURRENT ACTIVITIES	IWI /HAPŪ WITH INTERESTS IN THE MAUNGA
Cultural Activities	
Dogs - Leashed	
Grazing	
	Ngāi Tai ki Tāmaki
	Ngāti Maru
	Ngāti Pāoa
	Ngāti Tamaoho
	Ngāti Tamaterā
	Ngāti Te Ata
	Ngāti Whanaunga
	Ngāti Whātua Ōrākei
	Ngāti Whātua o Kaipara
	Te Ākitai Waiohū
	Te Kawerau ā Maki
	Te Patukirikiri
	Te Rūnanga o Ngāti Whātua



Te Kōpuke / Tītīkōpuke / Mount St John, c. 1950-1960 (Department of Anthropology, University of Auckland)



Location Map  Te Kōpuke / Tītīkōpuke / Mount St John



TE TĀTUA-A-RIUKIUTA / BIG KING



Recreation Reserve

Legal Boundary



Te Tātua-a-Riukiuta / Big King, c. 1868 (Richardson Album V.5, Auckland Museum)


CURRENT ACTIVITIES

- Cultural Activities
- Public car parking area
- Public toilet facilities
- Above ground reservoirs and/or associated infrastructure
- Underground reservoir and/or associated infrastructure
- Dogs - Leashed
- Dogs - Unleashed

IWI / HAPŪ WITH INTERESTS IN THE MAUNGA

- Ngāi Tai ki Tāmaki
- Ngāti Maru
- Ngāti Tamaoho
- Ngāti Tamaterā
- Ngāti Te Ata
- Ngāti Whanaunga
- Ngāti Whātua Ōrākei
- Ngāti Whātua o Kaipara
- Te Ākitai Waiohau
- Te Kawerau ā Maki
- Te Rūnanga o Ngāti Whātua



Location Map  Te Tātua-a-Riukiuta / Big King