

## ŌTĀHUHU / MT RICHMOND

### CONTRACTS

A variation to the Recreation Services full facilities maintenance contract hasn't been negotiated yet. This section will be updated when this is finalised.

CONTRACTOR	DESCRIPTION	CONTRACT VALUE	PERIOD COVERED
Recreation Services	Full facilities maintenance - annual scheduled works and response under \$1000	\$175,398	July 2022

### LEASES / CONCESSIONS

LEASE / CONCESSION HOLDER	ACTIVITY TYPE	LEASE / CONCESSION STATUS / TERM	ANNUAL FEE	LEASE / CONCESSION EXPIRY DATE
Northern Sport Car Club Inc	Community activity (sports)	10 year term (2x5 years) first term expires Oct 2016	\$2,970 + GST	Final expiry 31 Oct 2021
Otāhuhu Rovers Rugby League Football Club	Community activity (sports)	1x5 year term with 2x5 year renewal	\$5,000+ GST	Final expiry 31 Aug 2023
BWH Holding Ltd	Water Consent	10 year term	TBC	30 April 2019
Watercare Services Ltd	Reservoirs & associated infrastructure	In perpetuity	\$0.00	
<b>TOTAL REVENUE PER ANNUM:</b>			<b>\$7,970 + GST</b>	



Image: View from Ōtāhuhu / Mt Richmond looking toward Maungakiekie / One Tree Hill



## ŌWAIKAKA / TE AHI-KĀ-A-RAKATAURA / MT ALBERT

### IWI / HAPŪ INTERESTS:

Ngāi Tai ki Tāmaki

Ngāti Maru

Ngāti Pāoa

Ngāti Tamaoho

Ngāti Tamaterā

Ngāti Te Ata

Ngāti Whātua o Kaipara

Ngāti Whātua Ōrakei

Te Ākitai Waiohū

Te Kawerau ā Maki

Te Rūnanga o Ngāti Whātua

### LOCAL BOARD AREA:

Albert – Eden Local Board

### RESERVE CLASSIFICATION:

Recreation Reserve

### LEGAL DESCRIPTION:

3.7660 hectares Part  
Allotment 100 Parish of  
Titirangi

5.0890 hectares Part  
Allotment 100 Parish of  
Titirangi

0.6310 hectares Lot 48 DP  
39801

0.0290 hectares Part  
Allotment 195 Parish of  
Titirangi

## ŌWAIKAKA / TE AHI-KĀ-A-RAKATAURA / MT ALBERT

### CAPITAL EXPENDITURE PROGRAMME

VALUE	PROJECT	DESCRIPTION	2021/22	2022/23	2023/24
MANA AOTŪROA / CULTURAL & HERITAGE	Interpretation and Wayfinding signs	Network wide programme to develop comprehensive site- specific interpretation and wayfinding signage	X	X	X
	Storytelling and Cultural Infrastructure	Network-wide programme to develop unique infrastructure that bring Mana Whenua stories and values to life on the maunga	\$0	X	X
TAKOTORANGA / LANDSCAPE	Protection and restoration of integrity of the Tūpuna Maunga	Network-wide programme to remove vegetation and revegetate	X	X	X
MANA WHAI A RĒHIA / RECREATIONAL	Ancillary visitor infrastructure	Programme to renew roadways on the maunga	\$0	\$0	\$280,000
	Track network	Develop track network to improve access and protect values	\$50,000	\$200,000	\$0
	Sports fields and Infrastructure	Programme to investigate opportunities and implement suitable facilities for Sports Programmes	\$0	\$60,000	\$0

Note: X indicates that this is part of a network-programme shown on page 81

# ŌWAIRAKA / TE AHI-KĀ-A-RAKATAURA / MT ALBERT

## OPERATIONAL EXPENDITURE PROGRAMME

VALUE	PROJECT	DESCRIPTION	2021/22	2022/23	2023/24
MAURI PŪNAHA HAUROPI / ECOLOGY AND BIODIVERSITY	Pest Management	Undertake animal and plant pest control	\$15,800	\$16,037	\$16,294
	Vegetation Management	Annual Vegetation Maintenance programme including control of cherry, privet	\$20,893	\$12,282	\$14,527
MANA HONONGA TANGATA / LIVING CONNECTIONS	Volunteers and Partners	Continue to build strong working relationships with partners across the maunga	X	X	X
	Water / Electricity Expenses		\$239	\$243	\$247
WHAI RAWA WHAKAUKA / ECONOMIC AND COMMERCIAL	Commercial Operators	Formalise agreements with commercial operators on the maunga	X	X	X
MANA WHAI A RĒHIA / RECREATIONAL	Events and Activations	Activate Māori sports programme	X	X	X
TAKATORANGA WHENUA / LANDSCAPE	Perimeter Firebreaks	Continuation of firebreaks programme to reduce risk of fire in sensitive areas	\$2,314	\$2,349	\$2,386

Note: X indicates that this is part of a network-programme shown on page 82



## ŌWAIRAKA / TE AHI-KĀ-A-RAKATAURA / MT ALBERT

### CONTRACTS

CONTRACTOR	DESCRIPTION	CONTRACT VALUE	PERIOD COVERED
Recreation Services	Full facilities maintenance - annual scheduled works and response under \$1000	\$90,273	July 2022

### LEASES / CONCESSIONS

LEASE / CONCESSION HOLDER	ACTIVITY TYPE	LEASE / CONCESSION STATUS / TERM	ANNUAL FEE	LEASE / CONCESSION EXPIRY DATE
Mountain Green Archery Club	Community activity (Sports)	Final term of 5 years approved in Sept 16	\$500 + GST	Final expiry 31 March 2021
Watercare Services Ltd	Reservoir & associated infrastructure	In perpetuity	\$0.00	
<b>TOTAL REVENUE PER ANNUM:</b>			<b>\$500 + GST</b>	



Image: View west from Ōwairaka / Te Ahi-kā-a-Rakataura / Mt Albert toward the Waitakere





## PUKEWĪWĪ / PUKETĀPAPA / MT ROSKILL

### IWI / HAPŪ INTERESTS:

Ngāi Tai ki Tāmaki

Ngāti Maru

Ngāti Tamaoho

Ngāti Tamatera

Ngāti Te Ata

Ngāti Whātua o Kaipara

Ngāti Whātua Ōrakei

Te Ākitai Waiohū

Te Kawerau ā Maki

Te Rūnanga o Ngāti Whātua

### LOCAL BOARD AREA:

Puketāpapa Local Board

### RESERVE CLASSIFICATION:

Recreation Reserve

### LEGAL DESCRIPTION:

8.3259 hectares Part Lot  
1476 DP 22826

0.1452 hectares Lots 94 &  
211 DP 42694

0.2081 hectares Section 3 SO  
430425

0.3922 hectares Lots 103,  
106, 107 & 109 DP 41516

## PUKEWĪWĪ / PUKETĀPAPA / MT ROSKILL

### CAPITAL EXPENDITURE PROGRAMME

VALUE	PROJECT	DESCRIPTION	2021/22	2022/23	2023/24
MANA AOTŪROA / CULTURAL & HERITAGE	Interpretation and Wayfinding signs	Network wide programme to develop comprehensive site- specific interpretation and wayfinding signage	X	X	X
MAURI PŪNAHA HAUROPI / ECOLOGY AND BIODIVERSITY	Pest Proof Fencing	Establish fencing to create pest proof areas on the maunga	\$0	\$0	\$100,000
TAKOTORANGA / LANDSCAPE	Protection and restoration of integrity of the Tūpuna Maunga	Network-wide programme to remove vegetation and revegetate	X	X	X
	Traditional Cultivation	Network-wide programme to establish gardens based on Matauranga Māori such as māra kai, rongoa and pā harakeke	\$0	\$20,000	\$40,000
MANA WHAI A RĒHIA / RECREATIONAL	Track network	Develop track network to improve access and protect values	\$0	\$60,000	\$0
	Protection and restoration of integrity of the Tūpuna Maunga	Programme to provide welcoming entranceways and remove redundant infrastructure	\$50,000	\$535,000	\$0
	Fences and Barriers	Renew fences and barriers on the maunga and establish new ones where needed	\$0	\$180,000	\$0

Note: X indicates that this is part of a network-programme shown on page 81

## PUKEWĪWĪ / PUKETĀPAPA / MT ROSKILL

### OPERATIONAL EXPENDITURE PROGRAMME

VALUE	PROJECT	DESCRIPTION	2021/22	2022/23	2023/24
MAURI PŪNAHA HAUROI / ECOLOGY AND BIODIVERSITY	Pest Management	Undertake animal and plant pest control	\$11,300	\$11,470	\$11,653
	Vegetation Management	Annual Vegetation Maintenance programme including control of cherry, privet	\$18,846	\$10,112	\$12,323
MANA HONONGA TANGATA / LIVING CONNECTIONS	Volunteers and Partners	Continue to build strong working relationships with partners across the maunga	X	X	X
WHAI RAWA WHAKAUKA / ECONOMIC AND COMMERCIAL	Commercial Operators	Formalise agreements with commercial operators on the maunga	X	X	X

Note: X indicates that this is part of a network-programme shown on page 82

### CONTRACTS

CONTRACTOR	DESCRIPTION	CONTRACT VALUE	PERIOD COVERED
Recreation Services	Full facilities maintenance annual scheduled works and response under \$1000	\$44,722	July 2022

### LEASES / CONCESSIONS

LEASE HOLDER	ACTIVITY TYPE	LEASE STATUS / TERM	ANNUAL FEE	LEASE EXPIRY DATE
Watercare Services Ltd	Reservoir & associated infrastructure	In perpetuity	\$0.00	
<b>TOTAL REVENUE PER ANNUM:</b>			<b>\$0.00 + GST</b>	





## TAKARUNGA / MT VICTORIA

### IWI / HAPŪ INTERESTS:

Ngāi Tai ki Tāmaki

Ngāti Maru

Ngāti Pāoa

Ngāti Tamaoho

Ngāti Tamaterā

Ngāti Te Ata

Ngāti Whanaunga

Ngāti Whātua o Kaipara

Ngāti Whātua Ōrakei

Te Ākitai Waiohū

Te Kawerau ā Maki

Te Patukirikiri

Te Rūnanga o Ngāti Whātua

### LOCAL BOARD AREA:

Devonport – Takapuna  
Local Board

### RESERVE CLASSIFICATION:

Recreation Reserve  
subsection (1)

Local Purpose Reserve  
subsection (2) and (3)

### LEGAL DESCRIPTION:

6.5476 hectares Part  
Allotment 42 & 46 Section 2

Parish of Takapuna

0.0726 hectares Part  
Allotment 42 Section 2  
Parish of Takapuna

1.0361 hectares Part  
Allotment 42 Section 2

Parish of Takapuna

## TAKARUNGA / MT VICTORIA

### CAPITAL EXPENDITURE PROGRAMME

VALUE	PROJECT	DESCRIPTION	2021/22	2022/23	2023/24
MANA AOTŪROA / CULTURAL & HERITAGE	Interpretation and Wayfinding signs	Network wide programme to develop comprehensive site-specific interpretation and wayfinding signage	X	X	X
	Storytelling and Cultural Infrastructure	Network-wide programme to develop unique infrastructure that bring Mana Whenua stories and values to life on the maunga	X	\$0	\$0
	Asset restoration	Restoration of historic assets on the maunga	\$0	\$0	\$116,000
TAKOTORANGA / LANDSCAPE	Protection and restoration of integrity of the Tūpuna Maunga	Programme to provide welcoming entranceways and remove redundant infrastructure	\$120,000	\$0	\$0
MANA WHAI A RĒHIA / RECREATIONAL	Ancillary visitor infrastructure	Develop wharepaku / toilets and other visitor amenities	X	\$0	\$0
	Protection and restoration of tihi	Repurpose or remove redundant parking and reinstate and minimise impact of remaining infrastructure.	\$0	\$200,000	\$0
	Ancillary visitor infrastructure	Review vehicle circulation and parking provision and implement agreed changes	X	\$0	\$0
	Ancillary visitor infrastructure	Redevelop playground to create a bespoke play space inspired by the landscape and the stories associated with the maunga and Māori culture	\$0	\$0	\$220,000

Note: X indicates that this is part of a network-programme shown on page 81

## TAKARUNGA / MT VICTORIA

### OPERATIONAL EXPENDITURE PROGRAMME

VALUE	PROJECT	DESCRIPTION	2021/22	2022/23	2023/24
MAURI PŪNAHA HAUROPI / ECOLOGY AND BIODIVERSITY	Pest Management	Undertake animal and plant pest control	\$19,500	\$19,793	\$20,109
	Vegetation Management	Annual Vegetation Maintenance programme including control of cherry, privet	\$18,846	\$10,112	\$12,323
MANA HONONGA TANGATA / LIVING CONNECTIONS	Volunteers and Partners	Continue to build strong working relationships with partners across the maunga	X	X	X
	Building Maintenance associated costs	Michael King Writers Cottage Bunker The Depot Gun emplacement & tunnels	\$1,813	\$1,840	\$1,870
WHAI RAWA WHAKAUKA / ECONOMIC AND COMMERCIAL	Commercial Operators	Formalise agreements with commercial operators on the maunga	X	X	X

Note: X indicates that this is part of a network-programme shown on page 82

## TAKARUNGA / MT VICTORIA

### CONTRACTS

CONTRACTOR	DESCRIPTION	CONTRACT VALUE	PERIOD COVERED
Recreation Services	Full facilities maintenance - annual scheduled works and response under \$1000	\$45,004	July 2022

### LEASES / CONCESSIONS

LEASE HOLDER	ACTIVITY TYPE	LEASE STATUS / TERM	ANNUAL FEE	LEASE EXPIRY DATE
North Shore Play Centre Assoc Inc	Community activity (preschool)	20 year term (2 x 10 years)	\$1.00 + GST	31 Aug 2023
The Depot Inc	Community activity (gallery)	2 years and 2 month term and one 1 year renewal	\$3,600 + GST	30 June 2020
Michael King Writer Studio Trust	Community activity (creative)	20 year terms (2 x 10 years)	\$1.00 + GST	19 June 2025
Devonport Folk Music Club	Community activity (music)	20 year term (2 x 10 years) First term expired May 2019	\$1.00 + GST	15 May 2029
<b>TOTAL REVENUE PER ANNUM:</b>			<b>\$3,603 + GST</b>	





## TE PANE-O-MATAAHO / TE ARA PUERU / MĀNGERE MOUNTAIN

### IWI / HAPŪ INTERESTS:

Ngāi Tai ki Tāmaki

Ngāti Maru

Ngāti Tamaoho

Ngāti Tamaterā

Ngāti Te Ata

Ngāti Whātua o Kaipara

Ngāti Whātua Ōrakei

Te Ākitai Waiohū

Te Kawerau ā Maki

Te Patukirikiri

### LOCAL BOARD AREA:

Māngere – Ōtāhuhu Local  
Board

0.0460 hectares more or  
less, being Allotment 270

Parish of Manurewa

### RESERVE CLASSIFICATION:

Historic, Recreation & Local  
Purpose

0.3914 hectares more or  
less, being Section 3 SO  
68568

0.1019 hectares more or  
less, being Section 4 SO  
68568

### LEGAL DESCRIPTION:

31.8291 hectares more or  
less, being Section 1 SO  
68568

0.4520 hectares more or  
less, being Section 1 SO  
41481

5.3805 hectares more or  
less, being Section 2 SO  
68568

0.0865 hectares more or  
less, being Lot 16 DP 42381

0.1889 hectares more or  
less, being Section 1 SO  
40483

Image: Te Pane-o-Mataaho/Te Ara Pueru / Māngere Mountain from  
Maungakiekie / One Tree Hill

## TE PANE-O-MATAAHO / TE ARA PUERU / MĀNGERE MOUNTAIN

### CAPITAL EXPENDITURE PROGRAMME

VALUE	PROJECT	DESCRIPTION	2021/22	2022/23	2023/24
MANA AOTŪROA / CULTURAL & HERITAGE	Interpretation and Wayfinding signs	Network wide programme to develop comprehensive site-specific interpretation and wayfinding signage	X	X	X
	Storytelling and Cultural Infrastructure	Network-wide programme to develop unique infrastructure that bring Mana Whenua stories and values to life on the maunga	\$40,000	\$375,000	\$0
	Protection and restoration of tihi	Develop crater loop track	\$100,000	\$0	\$0
TAKOTORANGA / LANDSCAPE	Protection and restoration of integrity of the Tūpuna Maunga	Network-wide programme to remove vegetation and revegetate	X	X	X
MAURI PŪNAHA HAUROI / ECOLOGY AND BIODIVERSITY	Traditional Cultivation	Network-wide programme to establish gardens based on Matauranga Māori such as māra kai, rongoa and pā harakeke	\$0	\$20,000	\$20,000
MANA WHAI A RĒHIA / RECREATIONAL	Ancillary visitor infrastructure	Redevelop playground to create a bespoke play space inspired by the landscape and the stories associated with the maunga and Maori culture.	\$400,000	\$0	\$0
	Track network	Develop track network to improve access and protect values	\$0	\$0	\$400,000

Note: X indicates that this is part of a network-programme shown on page 81

## TE PANE-O-MATAAHO / TE ARA PUERU / MĀNGERE MOUNTAIN

### OPERATIONAL EXPENDITURE PROGRAMME

VALUE	PROJECT	DESCRIPTION	2021/22	2022/23	2023/24
MAURI PŪNAHA HAUROPI / ECOLOGY AND BIODIVERSITY	Pest Management	Undertake animal and plant pest control	\$21,200	\$21,518	\$21,862
	Vegetation Management	Annual Vegetation Maintenance programme	\$18,847	\$10,112	\$12,323
MANA HONONGA TANGATA / LIVING CONNECTIONS	Volunteers and Partners	Continue to build strong working relationships with partners across the maunga	X	X	X
	Building Maintenance associated costs	Memorial Hall Toilets /changing rooms	\$1,813	\$1,840	\$1,870
	Water /Electricity Expenses	Expenses relating to toilets	\$2,110	\$2,142	\$2,176
WHAI RAWA WHAKAUKA / ECONOMIC AND COMMERCIAL	Commercial Operators	Formalise agreements with commercial operators on the maunga	X	X	X
TAKATORANGA WHENUA / LANDSCAPE	Perimeter Firebreaks	Continuation of firebreaks programme to reduce risk of fire in sensitive areas	\$11,141	\$11,308	\$11,489

Note: X indicates that this is part of a network-programme shown on page 82



## TE PANE-O-MATAAHO / TE ARA PUERU / MĀNGERE MOUNTAIN

### CONTRACTS

CONTRACTOR	DESCRIPTION	CONTRACT VALUE	PERIOD COVERED
Recreation Services	Full facilities maintenance -annual scheduled works and response under \$1000	\$161,539	July 2022

### HIREABLE FACILITIES

FACILITY	ACTIVITY TYPE	STATUS	ANNUAL FEE	EXPIRY DATE
Mangere Memorial Hall	General activity type	Short term occupancy – available for hire	Council's fees and charges	N/A

### LEASES / CONCESSIONS

LEASE HOLDER	ACTIVITY TYPE	LEASE STATUS / TERM	ANNUAL FEE	LEASE EXPIRY DATE
Onehunga Mangere United Football Club	Football and softball	1 x 10 year term	\$0.10	30 June 2020
The Auckland Playcentres Association Inc	Playcentre	2 x 10 years	\$0.10	31 July 2021

**TOTAL REVENUE PER ANNUM:** **\$0.20 + GST**



Image: Te Pane-o-Mataaho/Te Ara Pueru / Māngere Mountain





## TE KŌPUKE / TĪTĪKŌPUKE / MT ST JOHN

### IWI / HAPŪ INTERESTS:

<u>Ngāi Tai ki Tāmaki</u>
<u>Ngāti Maru</u>
<u>Ngāti Pāoa</u>
<u>Ngāti Tamaoho</u>
<u>Ngāti Tamaterā</u>
<u>Ngāti Te Ata</u>
<u>Ngāti Whanaunga</u>
<u>Ngāti Whātua o Kaipara</u>
<u>Ngāti Whātua Ōrakei</u>
<u>Te Ākitai Waiohū</u>
<u>Te Kawerau ā Maki</u>
<u>Te Patukirikiri</u>
<u>Te Rūnanga o Ngāti Whātu</u>

LOCAL BOARD AREA:  
Albert Eden Local Board

RESERVE  
CLASSIFICATION:  
Recreation Reserve

LEGAL DESCRIPTION:  
3.0402 hectares Allotment  
12A Section 11 Suburbs of  
Auckland

0.1576 hectares Part Lot 23  
of Allotment 18 Section 11

Suburbs of Auckland

0.2633 hectares Part Lots 24  
& 25 DP 13194

0.4879 hectares Lot 1 DP  
39142

0.3819 hectares Lot 1 DP  
37516

0.0047 hectares Part Lot 5  
DP 106274

0.1110 hectares Parts Lot 8  
DP 15394

0.1901 hectares Allotment  
43 & Part Allotment 44  
Section 11

Suburbs of Auckland

0.0033 hectares Part  
Allotment 15 Section 11

Suburbs of Auckland

0.0098 hectares Lot 4 DP  
106274

Image: Te Kōpuke / Tītīkōpuke / Mt St John from Ōhinerāu /  
Mt Hobson

## TE KŌPUKE / TĪTĪKŌPUKE / MT ST JOHN

### CAPITAL EXPENDITURE PROGRAMME

VALUE	PROJECT	DESCRIPTION	2021/22	2022/23	2023/24
MANA AOTŪROA / CULTURAL & HERITAGE	Interpretation and Wayfinding signs	Network wide programme to develop comprehensive site-specific interpretation and wayfinding signage	X	X	X
	Storytelling and Cultural Infrastructure	Network-wide programme to develop unique infrastructure that bring Mana Whenua stories and values to life on the maunga	\$0	\$20,000	\$330,000
	Protection and restoration of tihi	Develop crater rim track	\$80,000	\$0	\$0
TAKOTORANGA / LANDSCAPE	Protection and restoration of integrity of the Tūpuna Maunga	Network-wide programme to remove vegetation and revegetate	X	X	X
	Protection and restoration of integrity of the Tūpuna Maunga	Programme to remove redundant infrastructure	\$160,000	\$0	\$0

Note: X indicates that this is part of a network-programme shown on page 81

"Track network" includes the provision of amenity furniture

## TE KŌPUKE / TĪTĪKŌPUKE / MT ST JOHN

### OPERATIONAL EXPENDITURE PROGRAMME

VALUE	PROJECT	DESCRIPTION	2021/22	2022/23	2023/24
MAURI PŪNAHA HAUROPI / ECOLOGY AND BIODIVERSITY	Pest Management	Undertake animal and plant pest control	\$11,300	\$11,470	\$11,653
	Vegetation Management	Annual Vegetation Maintenance programme including control of cherry, privet & olives	\$18,847	\$10,112	\$12,323
WHAI RAWA WHAKAUKA / ECONOMIC AND COMMERCIAL	Commercial Operators	Formalise agreements with commercial operators on the maunga	X	X	X

Note: X indicates that this is part of a network-programme shown on page 82

### CONTRACTS

CONTRACTOR	DESCRIPTION	CONTRACT VALUE	PERIOD COVERED
Recreation Services	Full facilities maintenance - annual scheduled works and response under \$1000	\$24,528	July 2022

### LEASES / CONCESSIONS

LEASE HOLDER	ACTIVITY TYPE	LEASE STATUS / TERM	ANNUAL FEE	LEASE EXPIRY DATE
Watercare Services Ltd	Reservoirs & associated infrastructure	In perpetuity	\$0.00	
<b>TOTAL REVENUE PER ANNUM:</b>			<b>\$0.00 + GST</b>	





## TE TĀTUA A RIUKIUTA / BIG KING

### IWI / HAPŪ INTERESTS:

Ngāi Tai ki Tāmaki

Ngāti Maru

Ngāti Tamaoho

Ngāti Tamaterā

Ngāti Te Ata

Ngāti Whanaunga

Ngāti Whātua o Kaipara

Ngāti Whātua Ōrakei

Te Ākitai Waiohū

Te Kawerau ā Maki

Te Patukirikiri

### LOCAL BOARD AREA:

Puketāpapa Local Board

### RESERVE CLASSIFICATION:

Recreation Reserve

### LEGAL DESCRIPTION:

7.7295 hectares Section 1  
SO 34827



## TE TĀTUA A RIUKIUTA / BIG KING

### CAPITAL EXPENDITURE PROGRAMME

VALUE	PROJECT	DESCRIPTION	2021/22	2022/23	2023/24
MANA AOTŪROA / CULTURAL & HERITAGE	Interpretation and Wayfinding signs	Network wide programme to develop comprehensive site- specific interpretation and wayfinding signage	X	X	X
	Storytelling and Cultural Infrastructure	Network-wide programme to develop unique infrastructure that bring Mana Whenua stories and values to life on the maunga	\$20,000	\$40,000	
TAKOTORANGA / LANDSCAPE	Protection and restoration of integrity of the Tūpuna Maunga	Network-wide programme to remove vegetation and revegetate	X	X	X
MANA WHAI A RĒHIA / RECREATIONAL	Track network	Develop track network to improve access and protect values	X	\$0	\$0

Note: X indicates that this is part of a network-programme shown on page 81

## TE TĀTUA A RIUKIUTA / BIG KING

### OPERATIONAL EXPENDITURE PROGRAMME

VALUE	PROJECT	DESCRIPTION	2021/22	2022/23	2023/24
MAURI PŪNAHA HAUROPI / ECOLOGY AND BIODIVERSITY	Annual Plant Management	Undertake animal and plant pest control	\$20,500	\$20,808	\$21,140
	Vegetation Management	Annual Vegetation Maintenance programme	\$18,847	\$10,112	\$12,323
MANA HONONGA TANGATA / LIVING CONNECTIONS	Volunteers and Partners	Continue to build strong working relationships with partners across the maunga	X	X	X
	Water /Electricity Expenses	Expenses relating to toilets	\$1,861	\$1,889	\$1,920
WHAI RAWA WHAKAUKA / ECONOMIC AND COMMERCIAL	Commercial Operators	Formalise agreements with commercial operators on the maunga	X	X	X
TAKATORANGA WHENUA / LANDSCAPE	Perimeter Firebreaks	Continuation of firebreaks programme to reduce risk of fire in sensitive areas	\$7,081	\$7,187	\$7,302

Note: X indicates that this is part of a network-programme shown on page 82

## TE TĀTUA A RIUKIUTA / BIG KING

### CONTRACTS

CONTRACTOR	DESCRIPTION	CONTRACT VALUE	PERIOD COVERED
Recreation Services	Full facilities maintenance	\$88,355	July 2022

### LEASES / CONCESSIONS

LEASE HOLDER	ACTIVITY TYPE	LEASE STATUS / TERM	ANNUAL FEE	LEASE EXPIRY DATE
Watercare Services Ltd	Reservoir & associated Infrastructure	In perpetuity	\$0.00	
<b>TOTAL REVENUE PER ANNUM:</b>			<b>\$0.00 + GST</b>	



Image: Looking west on Te Tātua a Riukiuta / Big King



# GLOSSARY



Image: Looking north east from  
Te Pane-o-Mataaho / Te Ara Pueru / Māngere Mountain



TERM	MEANS
Administered lands	a. means <ul style="list-style-type: none"> <li>i. the Maungakiekie/One Tree Hill northern land; and</li> <li>ii. Māngere Mountain; and</li> </ul> b. except in subpart 5 of Part 2, includes any land - <ul style="list-style-type: none"> <li>i. described in section 110(1)(a) or (b); and</li> <li>ii. to which section 110(2) and (3) apply.</li> </ul>
Aotearoa	New Zealand
Aroha	Love
AUP	Auckland Unitary Plan
CPTED	Crime Prevention through Environmental Design
Harbours	Waitematā and Manukau
Hapū	Kinship group, tribe, and the primary political unit in traditional Māori society
Hauora	Health, vigour, be fit
Hui	Gathering, meeting, assembly
Iwi	Tribe, nationality, race
Kaitiaki	Mana Whenua guardian
Kaitiakitanga	Mana Whenua guardianship
Karaka	A tree ( <i>Corynocarpus laevigatus</i> ) with dark green, glossy, leaves and orange berries
Kōhanga Reo	Māori language preschool
Koiwi	Human bones
Kōtare	Kingfisher ( <i>Halcyon sancta</i> ); a native bird with distinct blue plumage
Mana	Prestige, spiritual power, charisma, status
Manaakitanga	Mutual respect, hospitality, kindness, generosity, support – the process of showing respect, generosity and care for others
Mana Aotūroa	Cultural and heritage
Mana Hononga Tangata	Living connection
Mana Whai a Rēhia	Recreational
Manuhiri	Visitor, guest
Marutūāhu Rōpū	The following collective of Iwi: Ngāti Maru, Ngāti Pāoa, Ngāti Tamaterā, Ngāti Whanaunga, Te Patukirikiri
Maunga	Mountain, mount, peak

TERM	MEANS
Mātauranga Māori	Māori knowledge, the body knowledge originating from Māori ancestors, including Māori world view, Māori creativity and cultural practices
Mauri Pūnaha Hauropi	Ecology and biodiversity
Member of Ngā Mana Whenua o Tāmaki Makaurau	An individual who is a member of 1 or more of the Iwi / Hapū who comprise Ngā Mana Whenua o Tāmaki Makaurau
Mokomoko	A native lizard (Duvaucel's gecko)
Motu	<ul style="list-style-type: none"> <li>a. Motuihe Island Recreation Reserve; and</li> <li>b. Motutapu Island Recreation Reserve; and</li> <li>c. Rangitoto Island Scenic Reserve; and</li> <li>d. Tiritiri Matangi Island Scientific Reserve.</li> </ul> <p>And “Hauraki Gulf / Tīkapa Moana inner motu” means—</p> <ul style="list-style-type: none"> <li>a. Browns Island Recreation Reserve; and</li> <li>b. Motuihe Island Recreation Reserve; and</li> <li>c. Motutapu Island Recreation Reserve; and</li> <li>d. Rangitoto Island Scenic Reserve; and</li> <li>e. Certain Rangitoto Island properties.</li> </ul>
Ngā Mana Whenua o Tāmaki Makaurau (“Ngā Mana Whenua”)	<ul style="list-style-type: none"> <li>a. Means the collective group of the following iwi/hapū: <ul style="list-style-type: none"> <li>i. Ngāi Tai ki Tāmaki; and</li> <li>ii. Ngāti Maru; and</li> <li>iii. Ngāti Pāoa; and</li> <li>iv. Ngāti Tamaoho; and</li> <li>v. Ngāti Tamaterā; and</li> <li>vi. Ngāti Te Ata; and</li> <li>vii. Ngāti Whanaunga; and</li> <li>viii. Ngāti Whātua o Kaipara; and</li> <li>ix. Ngāti Whātua Ōrākei; and</li> <li>x. Te Ākitai Waiohua; and</li> <li>xi. Te Kawerau ā Maki; and</li> <li>xii. Te Patukirikiri; and</li> <li>xiii. Hapū of Ngāti Whātua whose beneficiaries of Te Rūnanga o Ngāti Whātua; including Te Taoū not descended from Tuperiri; and</li> </ul> </li> <li>b. includes the individuals who are members of 1 or more of the iwi and hapū described in paragraph (a); and</li> <li>c. includes any whanau, hapū or group to the extent that it is composed of those individuals.</li> </ul>

TERM	MEANS
Ngā Mana Whenua o Tāmaki Makaurau Collective Redress Deed (“Collective Deed”)	The deed entitled Ngā Mana Whenua o Tāmaki Makaurau Collective Redress Deed
Ngāti Whātua Rōpū	The following collective of Iwi / Hapū: Ngāti Whātua o Kaipara, Ngāti Whātua Ōrākei, hapū of Ngāti Whātua (other than Ngāti Whātua o Kaipara and Ngāti Whātua Ōrākei) whose members are beneficiaries of Te Rūnanga o Ngāti Whātua
Noa	To be free from the extensions of tapu, ordinary, unrestricted
Pā	Fortified village or area
Pou	Post, upright, pole, sustenance
Pōwhiri	Rituals of encounter, welcome ceremony on a marae, welcome
Pukapuka	A small tree ( <i>Brachyglottis repanda</i> ); commonly referred to as Rangiora
Pūpū-rangi	A large native snail ( <i>Paryphanta</i> spp.)
Rangatahi	Younger generation, youth
Takotoranga Whenua	Landscape
Tāmaki Makaurau	Auckland
Tamariki	Children, youthful
Taonga	Treasure, anything prized – applied to anything considered to be of value including socially or culturally valuable objects, resources, phenomenon, ideas and techniques
Taonga tuku iho	Treasure handed down from the ancestors, heirloom, cultural property, heritage
Tauhou	Silvereye ( <i>Zosterops lateralis lateralis</i> ); a common green bird with a conspicuous white eye-ring
Tapu	Be sacred, prohibited, restricted, set apart, forbidden, under atua protection
Tihi	Summit, top, peak, point
Tikanga	Correct procedure, custom, habit, lore, method, manner, rule, way, code, meaning, plan, practice, convention, protocol – the customary system of values and practices that have developed over time and are deeply embedded in the social context
Trustee	The Tūpuna Taonga o Tāmaki Makaurau Trust Limited, acting in its capacity as trustee of the Tūpuna Taonga o Tāmaki Makaurau Trust
Tūī	Tūī ( <i>Prothemadera novaeseelandiae</i> ); a common songbird with black plumage and white throat tufts

TERM	MEANS
Tūpuna	Ancestors
Tūpuna Maunga	<ul style="list-style-type: none"> <li>Matukutūruru / Wiri Mountain;</li> <li>Maungakiekie / One Tree Hill;</li> <li>Maungarei / Mount Wellington;</li> <li>Maungauika / North Head;</li> <li>Maungawhau / Mount Eden;</li> <li>Ōhinerau / Mount Hobson;</li> <li>Ōhūiarangi / Pigeon Mountain;</li> <li>Ōtāhuhu / Mount Richmond;</li> <li>Ōwairaka / Tē Ahi-kā-a-Rakataura / Mount Albert;</li> <li>Pukewīwī / Puketāpapa / Mount Roskill;</li> <li>Rarotonga / Mount Smart;</li> <li>Takarunga / Mount Victoria;</li> <li>Te Ara Pueru / Te Pane-o-Mataaho/ Māngere Mountain;</li> <li>Te Kōpuke / Tītīkōpuke / Mount St John; and</li> <li>Te Tātua a Riukiuta / Big King</li> </ul>
Tūpuna Maunga o Tāmaki Makaurau Integrated Management Plan (IMP)	Document adopted 23 June 2016, providing strategic direction for the management of the 14 Tūpuna Maunga
Tūpuna Maunga o Tāmaki Makaurau Authority (“The Authority”)	<p>The Tūpuna Maunga o Tāmaki Makaurau Authority comprised of:</p> <ul style="list-style-type: none"> <li>six Ngā Mana Whenua appointees being two each from the Marutūāhu Rōpū, Ngāti Whātua Rōpū and Waiohūa Tāmaki Rōpū;</li> <li>six Auckland Council appointees; and</li> <li>one (non-voting) Crown representative</li> </ul>
Tūpuna Taonga o Tāmaki Makaurau Trust	The Tūpuna Taonga o Tāmaki Makaurau Trust
Unowned cats	<p>Any cat which is not:</p> <ol style="list-style-type: none"> <li>Microchipped, or otherwise identified with owner’s name and address; and</li> <li>Registered on the New Zealand Companion Animal Register <a href="https://www.animalregister.co.nz/">https://www.animalregister.co.nz/</a>.</li> </ol>
Volcanic Viewshaft	As defined under the Auckland Unitary Plan
Waahi tapu	Sacred place, sacred site – a place subject to long-term ritual restrictions on access or use



TERM	MEANS
Waiohua Tāmaki Rōpū	The following collective of Iwi/Hapū: Ngāi Tai ki Tāmaki, Ngāti Tamaoho, Ngāti Te Ata, Te Ākitai Waiohua, Te Kawerau ā Maki
Waharoa	Entrance to a pā, gateway, main entranceway
Wairuatanga	Spirituality
Weka	A flightless, endemic bird ( <i>Gallirallus australis greyi</i> ), with a short bill and brown plumage
Wētā	The common name for a group of large, wingless, nocturnal insects endemic to New Zealand
Whai Rawa Whakauka	Economic and commercial
Whakapapa	Genealogy, genealogical table, lineage, descent
Whare	House, building, residence, dwelling
Working dog	Has the same meaning as section 2 of the Dog Control Act 1996
Urupā	Burial ground, cemetery, graveyard



## Draft LTP 2021-2031 Tūpuna Maunga Authority

Funding Envelope	2021/22 \$000's	2022/23 \$000's	2023/24 \$000's	2024/25 \$000's	2025/26 \$000's	2026/27 \$000's	2027/28 \$000's	2028/29 \$000's	2029/30 \$000's	2030/31 \$000's	Totals
<b>Net Operating expenditure:*</b>											
Net Operating expenditure 2021-2031**	3,489	3,512	3,642	3,897	3,917	3,917	3,917	3,917	3,917	3,917	38,044
<i>Funding request</i>								441	543	640	1,624
<b>Net Operating expenditure 2021-2031</b>	<b>3,489</b>	<b>3,512</b>	<b>3,642</b>	<b>3,897</b>	<b>3,917</b>	<b>3,917</b>	<b>3,917</b>	<b>4,358</b>	<b>4,460</b>	<b>4,557</b>	<b>39,669</b>
Net Operating expenditure 2021-2031 (including inflation)***	3,524	3,600	3,792	4,127	4,219	4,297	4,376	4,955	5,160	5,364	43,414
<b>Capital expenditure:</b>											
Capital expenditure 2021-2031	6,925	8,875	9,086	9,395	9,820	12,780	12,800	13,056	13,317	13,583	109,638
<b>Capital expenditure 2021-2031</b>	<b>6,925</b>	<b>8,875</b>	<b>9,086</b>	<b>9,395</b>	<b>9,820</b>	<b>12,780</b>	<b>12,800</b>	<b>13,184</b>	<b>13,580</b>	<b>13,987</b>	<b>110,431</b>
<b>Total LTP Funding requirement 2021-2031</b>	<b>10,414</b>	<b>12,387</b>	<b>12,728</b>	<b>13,292</b>	<b>13,737</b>	<b>16,697</b>	<b>16,717</b>	<b>17,542</b>	<b>18,040</b>	<b>18,544</b>	<b>150,100</b>
<b>Total LTP Funding requirement 2021-2031 (including inflation)</b>	<b>10,449</b>	<b>12,475</b>	<b>12,878</b>	<b>13,522</b>	<b>14,039</b>	<b>17,077</b>	<b>17,176</b>	<b>18,139</b>	<b>18,740</b>	<b>19,351</b>	<b>153,846</b>

LTP 2018-2028 (excluding inflation)	10,414	12,387	12,728	13,292	13,737	16,697	16,717
Draft LTP 2021-2031 (excluding inflation)	10,414	12,387	12,728	13,292	13,737	16,697	16,717
<i>Difference</i>	0	0	0	0	0	0	0

*Opex funding request of \$1.6m in the last 3 years is for additional resources required (rangers, education officer, consents officer)*

### Notes:

\* Net operating expenditure excludes depreciation

\*\* Figures are in 2020/21 year values

\*\*\* Inflation is calculated at Council agreed rates



**Tūpuna Maunga o Tāmaki Makaurau  
CO-GOVERNANCE OF THE TŪPUNA MAUNGA/VOLCANIC CONES  
SUMMARY OF THE TŪPUNA MAUNGA AUTHORITY  
OPERATIONAL PLAN 2021/22**

[www.maunga.nz](http://www.maunga.nz)

**DRAFT**

The Ngā Mana Whenua o Tāmaki Makaurau Collective Redress Act 2014 (the Act) requires the Tūpuna Maunga o Tāmaki Makaurau Authority (Tūpuna Maunga Authority) and Auckland Council to prepare an Annual Operational Plan and a summary of that plan for inclusion in the Auckland Council's Annual Operational Plan 2021/22 process.

The Tūpuna Maunga Authority and Auckland Council are required to approve the Annual Operational Plan. The Tūpuna Maunga Authority Operational Plan 2021/22 must be considered and adopted concurrently with the Auckland Council's Operational Plan 2021/22. A summary of the Tūpuna Maunga Authority's indicative funding requirements are outlined in this Section.



## NGĀ MANA WHENUA O TĀMAKI MAKAURAU

Ngā Mana Whenua o Tāmaki Makaurau negotiated a collective settlement of their historical Treaty claims with the Crown. Ngā Mana Whenua o Tāmaki Makaurau is the collective name of the 13 iwi/hapū with historical Treaty claims in wider Tāmaki Makaurau. The iwi/hapū are grouped into the following three rōpū:

MARUTŪĀHU RŌPŪ	NGĀTI WHĀTUA	WAIOHUA TĀMAKI RŌPŪ
Ngāti Maru	Ngāti Whātua o Kaipara	Ngāi Tai ki Tāmaki
Ngāti Pāoa	Ngāti Whātua Ōrākei	Ngāti Tamaoho
Ngāti Tamaterā	Te Rūnanga o Ngāti Whātua	Ngāti Te Ata
Ngāti Whanaunga		Te Ākitai Waiohūa
Te Patukirikiri		Te Kawerau ā Maki

## THE NGĀ MANA WHENUA O TĀMAKI MAKAURAU COLLECTIVE REDRESS ACT 2014

The Collective Redress Act 2014 vested the Crown owned land in 14 Tūpuna Maunga (ancestral mountains / volcanic cones) in Ngā Mana Whenua o Tāmaki Makaurau. They are held for the common benefit of the iwi/hapū of Ngā Mana Whenua o Tāmaki Makaurau and the other people of Auckland. The Tūpuna Maunga are vested as reserves under the Reserves Act 1977.

### THE 14 TŪPUNA MAUNGA ARE:

**Matukutūruru/Wiri Mountain**

**Maungakiekie/One Tree Hill**

**Maungarei/Mount Wellington**

**Maungauika/North Head**

**Maungawhau/Mount Eden**

**Ōhinerāu/Mount Hobson**

**Ōhuirangi/Pigeon Mountain**

**Ōtāhuhu/Mount Richmond**

**Ōwairaka/Te Ahi-kā-a-Rakataura/ Mount Albert**

**Puketāpapa/Pukewīwī/Mount Roskill**

**Rarotonga/Mount Smart \***

**Takarunga/Mount Victoria**

**Te Kōpuke/Tītīkōpuke/Mount St John**

**Te Tātua a Riukiuta/Big King**

## CO-GOVERNANCE

The Act also established the Tūpuna Maunga Authority, a bespoke co-governance entity, to administer the Tūpuna Maunga.

The Authority has six representatives from Ngā Mana Whenua o Tāmaki Makaurau, six from Auckland Council and one non-voting Crown representative appointed by the Minister for Arts, Culture and Heritage. The term of the Authority aligns with the term of the Council.

Under the Act, the Tūpuna Maunga Authority is the administering body for each Maunga for the purposes of the Reserves Act 1977, with two exceptions of Maungauika / North Head and Rarotonga / Mount Smart.

Maungauika / North Head has previously been administered by the Crown (Department of Conservation) but has now been transferred to the Tūpuna Maunga Authority. Routine management is now undertaken by council under the direction of the Tūpuna Maunga Authority in the same way as for the other Maunga.

Responsibility for administration and management of Rarotonga / Mount Smart remains with Auckland Council (Regional Facilities Auckland) under the Mount Smart Regional Recreation Centre Act 1985 and Reserves Act 1977.

The Tūpuna Maunga Authority is also the administering body for Te Pane-o-Mataaho / Te Ara Pueru / Māngere Mountain and the Maungakiekie / One Tree Hill northern land.

The legislation provides for funding and staff resourcing through Auckland Council. The Authority is currently supported by a core team of eight council staff across the Governance and Parks, Sport and Recreation units.

The scale of this co-governance arrangement is unparalleled in Auckland and the resulting unified and cohesive approach to caring for the Maunga has garnered widespread support.

## STRATEGIC FRAMEWORK:

### TŪPUNA MAUNGA INTEGRATED MANAGEMENT PLAN

The Tūpuna Maunga Integrated Management Plan ("IMP") sets the foundations for how the Tūpuna Maunga are valued, protected, restored, enhanced, and managed in the future with equal consideration and reverence. The IMP established a set of Values for the Tūpuna Maunga which are outlined below.

The IMP was developed in accordance with Section 41 of the Reserves Act to provide for and ensure the use, enjoyment, maintenance, protection, preservation, and development as appropriate for the reserve purposes for which each of the Tūpuna Maunga is classified. This single integrated plan replaces the former separate legacy reserve management plans for the Tūpuna Maunga.

The IMP was approved in 2016 following a public consultation process and can be read online at [www.maunga.nz](http://www.maunga.nz).

### TŪPUNA MAUNGA INTEGRATED MANAGEMENT PLAN STRATEGIES

The Tūpuna Maunga Integrated Management Plan Strategies are the next level of policy development for the Tūpuna Maunga and aim to support the Values and Pathways in the Tūpuna Maunga Integrated Management Plan 2016.

The IMP Strategies was approved in 2019 following a public consultation process and can be read online at [www.maunga.nz](http://www.maunga.nz).

### TŪPUNA MAUNGA VALUES

Within the Tūpuna Maunga Integrated Management Plan, the Tūpuna Maunga Authority has articulated a set of values of the Tūpuna Maunga. The values promote the statutory purpose of the Tūpuna Maunga under section 109 of the Collective Redress Act, where in exercising its powers and functions the Authority must have regard to the spiritual, ancestral, cultural, customary and historical significance of the Tūpuna Maunga to Ngā Mana Whenua.

The values provide a strategic framework to guide the Tūpuna Maunga Authority in making any decision about the Tūpuna Maunga.

The values weave together and give expression to mana whenua and other world views, and the connections and histories in a manner that highlights the way in which these views complement each other and create a richness to the relationship people have with the Tūpuna Maunga and multiple ways in which ways in which these relationships are thought of and expressed.





## VALUE

## PATHWAYS

### WAIKUATANGA / SPIRITUAL

- Restore and recognise the relationship between the Maunga and its people.
- Recognise the tihi is sacred.
- Tread gently.
- Treat the Maunga as taonga tuku iho – treasures handed down the generations.

### MANA AOTŪROA / CULTURAL AND HERITAGE

- Enable mana whenua role as kaitiaki over the Tūpuna Maunga.
- Recognise European and other histories, and interaction with the maunga.
- Encourage culturally safe access.
- Restoring customary practices and associated knowledge.

### TAKOTORANGA WHENUA / LANDSCAPE

- Protect the integrity of the landscape of the Tūpuna Maunga.
- Active restoration and enhancement of the natural features of the Maunga.
- Encourage activities that are in keeping with the natural and indigenous landscape.
- Encourage design that reflects Tūpuna Maunga values.
- Promote a connected network of Tūpuna Maunga.
- Preserve the visual and physical integrity of the Maunga as landmarks of Tāmaki.

### MAURI PŪNAHA HAUROPI / ECOLOGY AND BIODIVERSITY

- Strengthen ecological linkages between the Tūpuna Maunga.
- Maunga tū mauri ora, Maunga tū makaurau ora / if the Maunga are well, Auckland is well.
- Protect and restore the biodiversity of the Tūpuna Maunga.

### MANA HONONGA TANGATA / LIVING CONNECTION

- Rekindle the sense of living connection between the Maunga and the people.
- Give expression to the history and cultural values of the Tūpuna Maunga.
- Actively nurture positive relationships.
- A place to host people.

### WHAI RAWA WHAKAUKA / ECONOMIC / COMMERCIAL

- Alignment with the Tūpuna Maunga values.
- Foster partnerships and collaboration.
- Focus on commercial activities that create value and enhance experience.
- Explore alternative and self-sustaining funding opportunities.

### MANA WHAI A RĒHIA / RECREATIONAL

- Balance informal and formal recreation.
- Encourage informal inclusive recreational activities.
- Recreational activities consistent with tikanga Māori.
- Maunga are special places and treasures handed down.
- Promote health and wellbeing.

## TŪPUNA MAUNGA OPERATIONAL PLAN 2021/22

Each financial year, the Tūpuna Maunga Authority and Council must agree an annual operational plan to provide a framework in which the Council will carry out its functions for the routine management of the Tūpuna Maunga and administered lands for that financial year, under the direction of the Tūpuna Maunga Authority.

The Tūpuna Maunga Operational Plan 2021/22 identifies a number of projects to be delivered or commenced in the coming financial year and the subsequent two financial years. The Tūpuna Maunga Operational Plan 2021/22 also sets out the 10-year work programme and funding envelope confirmed through the Long Term Plan 2021 -2031. The budget for 2021/22 and the subsequent years fits within this funding envelope.

A copy of the Operational Plan can be found at [www.aucklandcouncil.govt.nz](http://www.aucklandcouncil.govt.nz)

This work programme is a continuation from the Long-Term Plan 2018-28. This year's operational plan reflects the progress that has been made on this programme and includes further projects which have emerged from the Tūpuna Maunga Strategies.

### **PRIORITY PROGRAMMES AND PROJECTS OVER THE NEXT 3 YEARS INCLUDE:**

#### **POLICY AND MANAGEMENT**

- Develop individual Tūpuna Maunga plans to provide direction on how the Values, Pathways, guidelines and strategies should be reflected on each Tūpuna Maunga.
- Progressing the potential transfer of administration over certain Maunga reserve lands from the Department of Conservation to the Authority, and the potential transfer of the administration of land contiguous to other Tūpuna Maunga
- Establishment of a compliance programme including a review of current and establishment of appropriate bylaws.
- Development of individual Tūpuna Maunga plans which reflect the Integrated Values and Pathways,

overarching guidelines and strategies for each of the Tūpuna Maunga.

### **HEALING THE MAUNGA**

#### **VALUES:**

##### **TAKOTORANGA WHENUA / LANDSCAPE VALUE**

- Protection and restoration of the tihi (summits) including reconfiguring space and provision of cultural infrastructure.
- Protection and restoration of historic kumara pits, pā sites and wahi tapu
- Development of infrastructure to enhance visitor experience at including provision of carparks, amenity areas and ancillary infrastructure such as warepaku/ toilets.
- Removal of redundant infrastructure (built structures, water reservoirs, impermeable surfaces, etc) and returning areas to open space

### **EDUCATION, COMMUNICATIONS AND PARTNERSHIPS**

#### **VALUES:**

##### **WAIKUATANGA / SPIRITUAL VALUE**

- On-site staff to protect and enhance the Tūpuna Maunga and the visitor experience
- Volunteer programmes to connect communities to the Tūpuna Maunga
- Education programmes, community events and a bespoke website that celebrates the living connection that all communities have with the Tūpuna Maunga
- Implementation of the Education Strategy to promote the values of the Tūpuna Maunga and the unique history and whakapapa of Ngā Mana Whenua. This includes exploration of visitor centre

opportunities, connecting with communities of learning such as schools and the development of a communications strategy.

## CULTURAL CONNECTION

### VALUES:

MANA AOTŪROA / CULTURAL AND HERITAGE VALUE

MANA HONONGA TANGATA / LIVING CONNECTION VALUE

- Development of a programme of work which enables Ngā Mana Whenua to express their living and unbroken connection with the Tūpuna Maunga. This may include cultural interpretation including distinct entrance ways, pou whenua, pa reconstructions, kaitiaki opportunities, and other cultural activities.
- Mana whenua living connection programme focusing on their role as kaitiaki (guardians), restoring customary practices and associated knowledge and enabling cultural activities

## BIODIVERSITY/BIOSECURITY

### VALUES:

MAURI PŪNAHA HAUROI / ECOLOGY AND BIODIVERSITY VALUE

- Restoration of indigenous native ecosystems; reintroducing native plants and attracting native animal species; removing inappropriate exotic trees and weeds (For context, see pages 58, 65-66, 71, 87, and 90-91 of the Tūpuna Maunga Authority Integrated Management Plan, and at pages 7 and 34 of the Integrated Management Plan Strategies)
- Pest control on all Maunga in line with Auckland's plan to be pest free by 2050
- Researching options to achieve efficient and effective animal and pest control methods, which includes a phased reduction in the use of herbicides and pesticides on the Tūpuna Maunga.

## RECREATION AND ACTIVATION

### VALUES:

MANA HONONGA TANGATA / LIVING CONNECTION VALUE

MANA WHAI A RĒHIA / RECREATIONAL VALUE

- Exploration of facilities and activities on, around and between the Tūpuna Maunga which provide for passive and active recreational opportunities.

## COMMERCIAL

### VALUES:

WHAI RAWA WHAKAUKA / ECONOMIC / COMMERCIAL VALUE

- Develop and implement a commercial framework which ensures continued investment back into the Tūpuna Maunga. This includes exploration of potential commercial activities and facilities, as well as the development of a concession framework for commercial operators on the Maunga.

All projects are designed to deliver outcomes for the 13 iwi/hapū of the Tāmaki Collective and all the people of Auckland, enhance the mana and mauri of the Tūpuna Maunga and deliver improved open spaces across the eight local board areas.

They will also enable a compelling case in a future UNESCO World Heritage bid for the Tūpuna Maunga, which will contribute to a Māori identity that is Auckland's point of difference in the world. The bid for World Heritage status will require a dedicated resource and will continue to be progressed in this financial year in partnership with the Department of Conservation.

## SUMMARY OF INDICATIVE FUNDING REQUIREMENTS

The funding for Tūpuna Maunga is set at a regional level. The 10 Year budget to enable the priority projects and programmes to be endorsed in the council's 10 Year Budget (Long Term Plan) 2021-31 is shown in Table 2.

The budget for 2020-21 and the subsequent years fits within this endorsed funding envelope. In the context that there have been financial impacts arising from the Covid-19 pandemic, the overall budget in the 2020/21 financial year has been amended from the 2018-2028 funding envelope shown below. The Operational Expenditure has been reduced by 5 per cent to give a new total of \$3.5 million and \$1.2 million of the Capital Expenditure has been deferred to give a new investment level of \$5.9 million.

**TABLE 2 – FUNDING ENVELOPE FOR THE TŪPUNA MAUNGA AUTHORITY ENDORSED IN THE COUNCIL'S 10 YEAR BUDGET (LONG TERM PLAN) 2021-31**

FUNDING ENVELOPE	2021/22 \$000's	2022/23 \$000's	2023/24 \$000's	2024/25 \$000's	2025/26 \$000's	2026/27 \$000's	2027/28 \$000's	2028/29 \$000's	2029/30 \$000's	2030/31 \$000's
<b>Net operating expenditure:*</b>										
Net operating expenditure: 2021-31**	3,489	3,512	3,642	3,897	3,917	3,917	3,917	3,917	3,917	3,917
Funding request								441	543	640
Net operating expenditure: 2021-31	3,489	3,512	3,642	3,897	3,917	3,917	3,917	4,358	4,460	4,557
Net operating expenditure: 2021-31(including inflation)***	3,524	3,600	3,792	4,127	4,219	4,297	4,376	4,955	5,160	5,364
Capital expenditure 2021-31:	6,925	8,875	9,086	9,395	9,820	12,780	12,800	13,056	13,317	13,583
Capital expenditure 2021-31:	6,925	8,875	9,086	9,395	9,820	12,780	12,800	13,184	13,580	13,982
<b>Total LTP Funding Requirement 2021-31</b>	10,414	12,387	12,728	13,292	13,737	16,697	16,717	17,542	18,040	18,544
<b>Total LTP Funding Requirement 2021-2031 (including inflation)</b>	10,449	12,475	12,878	13,522	14,039	17,077	17,176	18,139	18,740	19,351

Notes:

*Opex funding request for \$1.6M in the last 3 years is for additional resources required (rangers, education officers, consents officer)*

\* Net operating expenditure excludes depreciation

\*\* Figures are in 2020/21 year values

\*\*\* Inflation is calculated at Council agreed rates



**Maunga Authority: Quarter 1 Report**

Author: Nick Turoa, Manager – Tūpuna Maunga

<b>Purpose</b>	To consider the Quarterly Report for the first quarter of the 2020/21 financial year.
----------------	---

1. Management refer the Authority to the Quarterly Report (Q1) attached as item 5 to the Open Agenda Hui for Hui 60, 16 November 2020



## QUARTER 1 REPORT

As at 30 September 2020

---

# **CONTENTS**

## **1. Key highlights**

## **2. Tūpuna Maunga – key objectives and Maunga-specific work programme**

## **3. Financials**

### **3.1 Operating revenue and costs**

### **3.2 Capital projects**



## 1. Key highlights in this quarter:

- **COVID 19 Response**

Successful delivery of operations during the second Level 3 lockdown, and Level 2.5 restrictions, that occurred from 12 August 2020 to 30 August 2020.

- **Maungawhau/ Mt Eden Boardwalk**

On 29 August the new tihi boardwalk was opened to the public. Unfortunately due to COVID 19 level 2 lockdown restrictions we were unable to have an opening event.

- **Planting season complete**

The planting season for year has been complete with new plants being planted on Ōwairaka/ Te Ahi-Ka-a-Rakataura/ Mt Albert, Ōhūiarangi/ Pigeon Mountain/ Maungarei/ Mt Wellington, Te Pane a Mataoho/ Te Ara Pueru/ Māngere Mountain, Ōtahuhu/ Mt Richmond, and Matukutūruru. Unfortunately due to COVID 19 Restriction we were unable to hold all of our community planting days. When this occurred the planting was undertaken by contractors. Approximately 22,000 native plants were planted during this period.

- **Maungarei/ Mt Wellington Privet Control**

Approximately 2 Ha of Privet was removed from Maungarei. The mulch from this privet was utilised for the new plantings at Maungarei. Management continue to control the privet on the maunga to ensure that the area doesn't become reinfested.

## 2. Tūpuna Maunga key activities and maunga-specific work programmes

This section of the Performance Report lists each of the Tūpuna Maunga and the key activities undertaken this quarter:

Matukutūruru / Wiri	<p>Removal of gorse and other weeds from the Maunga continues.</p> <p>Pest and weed control focus on possums and ecological weeds.</p> <p>Continued rabbit eradication programme with night shooting.</p> <p>as part of our continued vegetation restoration 1600 native plants were planted on the maunga</p> <p>Detailed plans for Matukutūruru carpark progressed.</p>
---------------------	---

Maungakiekie / One Tree Hill	<p>Ongoing monitoring of tihi planting.</p> <p>Continued rabbit eradication programme with night shooting.</p> <p>Pest and weed control focus on rats, possums and ecological weeds continues.</p> <p>Progressing on detailed designs for tracks, Olive Grove pedestrianisations and bus circulation project continues.</p>
Maungarei / Mt Wellington	<p>Pest and weed control focus on rats, possums and ecological weeds.</p> <p>Privet removed in preparation of the planting programme</p> <p>As part of our continued vegetation restoration programme 6480 natives were planted.</p> <p>Continued rabbit eradication programme with night shooting.</p> <p>Restoration planting management and reporting undertaken.</p>
Maungauika/North Head	<p>Pest and weed control focus on rats and ecological weeds continues.</p> <p>Volunteers continued their rat trapping schedule during February</p> <p>Applications for resource consents for track upgrades, tunnel reinforcements and America's Cup event activations lodged.</p>
Maungawhau / Mt Eden	<p>Pest and weed control focus on rats and ecological weeds continues.</p> <p>Continued rabbit control for rabbit eradication programme with night shooting in the Tahaki Reserve.</p> <p>Maungawhau Boardwalk opened</p> <p>Plans for secondary tracks and Stage 2 of the tihi amenity area progressed.</p> <p>Upgrades at Whau cafe carried out including reconfiguration of toilets, the installation of a veranda over the entrance to Te Ipu Kōrero o Maungawhau, and the Whau Ice Cream store</p>
Ōhinerau / Mt Hobson	<p>Continued rabbit control for rabbit eradication programme with night shooting.</p> <p>Pest and weed control focus on rats, possums and ecological weeds.</p> <p>Scoping of secondary tracks has begun</p>
Ōhūiarangi/Pigeon Mountain	<p>Pest and weed control focus on rats, possums and ecological weeds.</p> <p>Restoration planting management and reporting undertaken.</p> <p>As part of the vegetation restoration a community planting day occurred on 1 August 2020. In total (including plants planted on the community planting day ) 4200 natives were planted</p>
Ōtāhuhu / Mt Richmond	<p>Continued rabbit control for rabbit eradication programme with night shooting.</p> <p>Pest and weed control focus on rats, possums and ecological weeds</p> <p>As part of continue vegetation restoration a community planting day was held on 2 August.</p>

Ōwairaka / Te Ahi-Ka-Rakataura / Mt Albert	<p>Pest and weed control focus on possums and ecological weeds.</p> <p>As part of continue vegetation restoration a community planting day was held on 2 August. In total 2245 natives were planted</p> <p>Track upgrades concept designs being progressed.</p>
Pukewīwī / Puketāpapa / Mt Roskill	<p>Pest and weed control focus on rats, possums and ecological weeds</p>
Takarunga / Mt Victoria	<p>Pest and weed control focus on rats, possums and ecological weeds</p> <p>Volunteers undertook the August rat pulse following the ANJA (August, November, January, April) model.</p>
Te Kōpuke / Titikopuke / Mt St John	<p>Pest and weed control focus on ecological weeds, rats and possum trapping.</p> <p>Plans for track upgrade progressed.</p> <p>work progressed on resource consent for track upgrades</p>
Te Pane-o-Mataaho/ Te Ara Pueru / Māngere Mountain	<p>Pest and weed control focus on ecological weeds and rats.</p> <p>as part of our continue vegetation restoration programme, contractors planted 3005 natives. Unfortunately due to level 2 lockdown restrictions a planting day on the maunga had to be cancelled.</p> <p>Continued rabbit control for rabbit eradication programme with night shooting.</p> <p>Mara Hūpara designs progressed.</p> <p>Track upgrades designs progressed.</p>
Te Tātua-a-Riukiuta / Big King	<p>Pest and weed control focus on ecological weeds, rats and possums trapping</p> <p>Volunteers undertook the August rat pulse following the ANJA (August, November, January, April) model and continue to do sessions controlling weeds on the boundaries and adjacent Housing NZ properties.</p> <p>Resource consent for track upgrades lodged.</p>

## 3.0 FINANCIALS

### 3.1 Operating revenue and costs

#### TŪPUNA MAUNGA O TĀMAKI MAKĀURAU AUTHORITY

Operating Revenue and Expenditure for Quarter 1 as at 30 September 2020

	Actual Qtr 1 \$'000	Budget Qtr 1 \$'000	Variance Qtr 1 \$'000	Actual YTD \$'000	Budget YTD \$'000	Variance YTD \$'000
Operating Revenue	-61	-56	5	-61	-56	5
Operating Expenditure	1,036	1,243	207	1,036	1,243	207
Governance Costs	26	39	13	26	39	13
<b>Net Operating Result</b>	<b>1,001</b>	<b>1,226</b>	<b>225</b>	<b>1,001</b>	<b>1,226</b>	<b>225</b>

#### TŪPUNA MAUNGA O TĀMAKI MAKĀURAU AUTHORITY

Operating Revenue and Expenditure for Quarter 1 as at 30 September 2020

	Actual Qtr 1 \$'000	Budget Qtr 1 \$'001	Variance Qtr 1 \$'000	Actual YTD \$'000	Budget YTD \$'000	Variance YTD \$'000
Fees and user charges revenue	-14	-13	1	-14	-13	1
Property rental revenue	-47	-43	4	-47	-43	4
<b>Operating Revenue</b>	<b>-61</b>	<b>-56</b>	<b>5</b>	<b>-61</b>	<b>-56</b>	<b>5</b>
Repairs and maintenance & Outsourced works	566	602	36	566	602	36
Professional services	33	126	93	33	126	93
Other expenditure on activities	437	515	77	437	515	77
<b>Operating Expenditure</b>	<b>1,036</b>	<b>1,243</b>	<b>207</b>	<b>1,036</b>	<b>1,243</b>	<b>207</b>
<b>Governance Costs</b>	<b>26</b>	<b>39</b>	<b>13</b>	<b>26</b>	<b>39</b>	<b>13</b>
<b>Net Operating Result</b>	<b>1,001</b>	<b>1,226</b>	<b>225</b>	<b>1,001</b>	<b>1,226</b>	<b>225</b>

#### Financial Commentary:

**Operating Revenue** for quarter one ended 30 September 2020 was in-line with budget.

**Operating Expenditure** for quarter one ended 30 September 2020 was lower than budget due to COVID-19 causing slowdown in progressing work.



## 3.2 Capital projects

### TŪPUNA MAUNGA O TĀMAKI MAKĀURAU AUTHORITY

Capital Projects Expenditure for Quarter 1 as at 30 September 2020

	Actual YTD \$'000	Budget YTD \$'000	Variance YTD \$'000	FY Budget (incl c/fwd) \$'000
Total Capital Projects	313	562	249	8,913

#### Financial Commentary:

**Capital Expenditure** for quarter one ended 30 September 2020 was small as the work programmes for the financial year are still being finalised and will be progressed in quarter two.

## Maungarei Tūwatawata Project

Author: Liz Parkin, Kaihautū Hōtaka

<b>Purpose</b>	To :consider the Tūwatawata fencing design for Maungarei / Mt Wellington
<b>Recommendations</b>	<p>That the Tūpuna Maunga Authority:</p> <ol style="list-style-type: none"><li><b>approve</b> the Maungarei Tūwatawata design concept and ongoing design development;</li><li><b>approve</b> management to work with Mana Whenua and the Tūpuna Taonga Trust to progress the detailed design and a resource consent application.</li></ol>

## Background

1. The Tūpuna Maunga Authority has made good progress with projects to heal Maungarei / Mt Wellington such the removal of vehicles from the tihi, native restoration programme and track development.
2. A further initiative is to install designed fencing to resolve operational issues on Maungarei. These operational issues include:
  - aging car barriers
  - a 7 wire post and batten fence at the tihi of the Maunga currently keeping people away from a cliffs edge.
3. Management propose a Maungarei Tūwatawata fencing design concept as shown in Attachment A to meet such operational issues. Management will work with Mana Whenua to detail the design further, to develop cultural markers and to begin telling the stories of the Tūpuna Maunga.

## Statutory and other considerations

4. This paper relates to Maungarei / Mt Wellington.
5. Clause 2.3 of the Ngā Mana Whenua o Tāmaki Makaurau Collective Redress Deed 2012 states:

*“2.3 The Tāmaki Makaurau collective legislation will, on the terms provided by section 43 of the draft bill, direct the Registrar-General to record on any computer freehold register for each maunga that the iwi and hapū of Ngā Mana Whenua o Tāmaki Makaurau specified for that maunga in table 1 of part 3 of the property redress schedule have spiritual, ancestral, cultural, customary and historical interests in the maunga.”*

6. The Collective Deed Property Redress Schedule contains the table referred to in clause 2.3, and the iwi/hapū having spiritual, ancestral, cultural, customary and historical interests in the Maunga are as follows:

Maungarei / Mt Wellington	Ngāi Tai ki Tāmaki Ngāti Maru Ngāti Pāoa Ngāti Tamaoho Ngāti Tamaterā Ngāti Te Ata Ngāti Whanaunga	Ngāti Whātua Orākei Ngāti Whatua o Kaipara Te Ākitai Waiohūa Te Kawerau ā Maki Te Patukirikiri Te Rūnanga o Ngāti Whātua
------------------------------	--	---

7. Any decision to determine management within a reserve must take into account the legislative and policy framework.
8. The Authority administers the Tūpuna Maunga under the Reserves Act 1977 and pursuant to Ngā Mana Whenua o Tāmaki Makaurau Collective Redress Act 2014. The Hauraki Gulf Marine Park Act 2000 is also relevant.
9. Section 109(2) of Ngā Mana Whenua o Tāmaki Makaurau Collective Redress Act 2014 requires the Authority to have regard to the spiritual, ancestral, cultural, customary, and historical significance of the maunga to Ngā Mana Whenua o Tāmaki Makaurau and that the tūpuna maunga is held in trust for Ngā Mana Whenua and the other people of Auckland.
10. The Tūpuna Maunga Authority's Integrated Management Plan (IMP) was adopted by the Authority in terms of Ngā Mana Whenua o Tāmaki Makaurau Collective Redress Act 2014 and the Reserves Act 1977. The Integrated Management Plan describes a series of "Values" and "Pathways" that guide all activities on the tūpuna maunga. The primary focus of the IMP is to protect the health and well-being of the tūpuna maunga. The "protection and enhancement of the mauri and wairua of the Tūpuna Maunga is paramount" (p57). As such the Authority must "tread gently" on the maunga to ensure that only appropriate structures are built. The provision of quality, appropriately located infrastructure that limit the disturbance of the Maunga supports Wairuatanga values of the IMP.
11. The Tūpuna Maunga Integrated Management Plan makes the following statement with respect to the Takotoranga Whenua / Landscape Value of the maunga:

The significance of the Tūpuna Maunga to mana whenua and all Aucklanders creates an opportunity to ensure the protection and enhancement of the physical and visual integrity of these natural features in the surrounding urban environment. Their significance includes the distinctive and impressive earthworks such as terracing, rua (storage pits), and defences, which are characteristic of pā on the maunga." (IMP Section 8.7)

12. The IMP also describes an intention to:

Make the connection and history between the Tūpuna Maunga and mana whenua apparent, physically through built structures such as whare, waharoa, entrances, reconstructed terraces, and visually through the design of structures, signage, furniture, carvings and pou.

13. The Tūpuna Maunga Authority adopted the Tūpuna Maunga Strategies at Hui 50 on 25 September 2020. The Tūpuna Maunga Strategies are 7 key sections that outline the strategic direction with regards to education, Biodiversity, Tūpuna Maunga Design, Recreation, commercial activities and monitoring. Together with the IMP, these strategies inform guide and manage the activities undertaken on the Maunga. Sections 7.3.1 and 7.3.2 and 7.3.7 of the Strategies contemplate the provision of cultural markers to recognise the sacred nature of the tihi and to utilise palisade style fencing.
14. The Tūpuna Maunga are within the catchments that support the Hauraki Gulf. The purpose of the Hauraki Gulf Marine Park Act 2000, among other matters, is to “recognise the historic, traditional, cultural, and spiritual relationship of the tangata whenua with the Hauraki Gulf”.

### Design developments

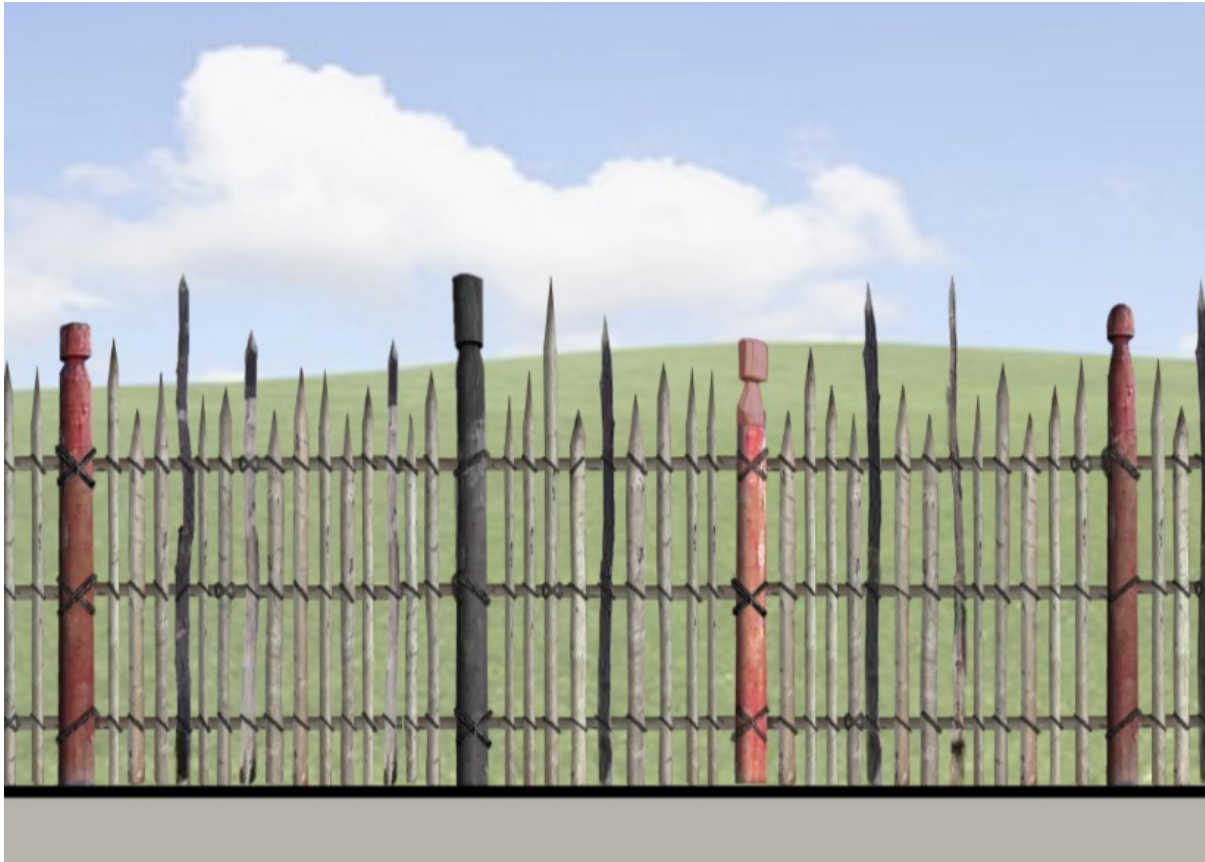
15. Management propose the fencing design as shown in Attachment A and have approached the three mana whenua rūpū requesting assistance and support for the development of the carved elements of the design. Management will continue working with Mana Whenua on the detailed design.
16. The development of interpretation to explain traditional techniques and traditional materials and an interactive digital tool will also being developed to bring this information to life, and to interpret the tūwatawata, once installed.
17. Management will work with nominated whakairo / carvers to refine the engineering designs for the tūwatawata fencing and carved elements of the design and secure the necessary consents for the project.

### Attachments

Attachment A: Indicative Maungarei tūwatawata fencing design



**Attachment A: Indicative Maungarei tūwatawata fencing design**



## Registers

Authors: Nick Turoa; Tūpuna Maunga Authority

---

<b>Purpose</b>	To provide the Tūpuna Maunga Authority with updated registers for: <ul style="list-style-type: none"><li>a. Health &amp; Safety (Attachment A)</li><li>b. Events (Attachment B)</li></ul>
<b>Recommendations</b>	That the Tūpuna Maunga Authority <b>note</b> the attached Registers, which have been updated since Hui 59 (19 October 2020).

## Registers

1. Attachment A - Health & Safety Register.
2. Attachment B - Events Register.

Attachment A: Health and Safety Register

Hui report ed to	Maunga	Summary of incident	Number of any near misses	Outcome of investigations into any incidents and near misses	Health and Safety management matters arising	Actions Taken
Hui 60	Maungauika	On 7 November 2020 a Mountain biker going off road fell off and dislocated shoulder		The injury was the result of an unlawful activity. Signage is in place on the Maunga (including directly beneath where the person fell off) Management were on site and assisted with the first aid given to the person and waited with them until an ambulance arrived		
Hui 60	Maungarei	On 6 November 2020, a group of youths attempted to get onto the Maunga to light fireworks. When they were asked to leave they tried to assault the guards on duty. Whilst running away, the security guard observed a can of petrol in one of the people's hands				The incident was reported to the Police who are currently investigating. An extra guard was put on the Maunga the following night and there will be night patrols on Maungarei over the next weekend.
Hui 60	Takarunga	On 5 November 2020, fireworks were thrown at guards on duty standing at the gate of Takarunga				While the security guard were unable to get registration details, the incident was reported to the Police.
Hui 60	Ohuiarangi	Several motorbikes driving up and down the terracing at Ōhuiārangi		Contractor reported that they are using mainly the track through the bush that was previously dug		Temporary fencing has been put in between the trees to block access down

Hui report ed to	Maunga	Summary of incident	Number of any near misses	Outcome of investigations into any incidents and near misses	Health and Safety management matters arising	Actions Taken
				out for illegal mountain bike tracks		from the tihi through this area. Bike signage still up and will be checked regularly The Team is investigating the possibility of barriers to prevent motor bikes.
Hui 58	Maungarei	Fire started on adjoining land to Maungarei Maunga from fireworks.	1	The fire was started as a result of fireworks set off by a group of youths. Apologies have been received by two of the youths and also an email report from the detective who investigated the matter. It is understood that group reported the incident directly to FENZ.		Tūpuna Maunga Staff attended the fire on the night and confirmed that the fire was not on the legal boundary of the Tūpuna Maunga. All firebreaks have been reviewed on Maungarei and extra precautions have been put in place during the closure of the Maunga during the Guy Fawkes Period.
Hui 58	Owairaka	A dog that was not under control attacked a member of the Mowing Team				Tūpuna Maunga staff ensuring dog bylaw signage still intact. Animal management contacted for assistance in managing uncontrolled dogs off leash
Hui 58	Maungawhau	Motorbike going down Maungawhau		Contractors were unable to get license plate for bike owner, have recommended additional speed humps or some other form of deterrent for		Tūpuna Maunga staff investigating options at slowing traffic down this side, already speed humps there currently though



Hui report ed to	Maunga	Summary of incident	Number of any near misses	Outcome of investigations into any incidents and near misses	Health and Safety management matters arising	Actions Taken
				bikes that come down the summit road		
Hui 57	Maungauika tunnel	Management have recently had a site visit to the tunnels with Geotech engineers who have advised that further assessments should be made of two areas; the tunnel leading to the coastal walkway and the “cave” next to the southern battery.				Management have sought a report from Geotech engineers and engineers about the safety of these two assets.
Hui 57	Maungauika/ North Head	On 27 July contractors advised us of a large new slip on the Maungauika/ North Head Coastal Track			This track has now been closed for over a year due to a slip in 2019. Management have previously scaled the wall of all loose rock and vegetation and been working with Geotech engineers and Geologist at the site for over a year now.	The Track remains closed. Extra signage and barriers have been put in place. Management have engaged Geotech engineers and geologist to re-assess the site.
Hui 56	Ōwairaka/ Te Ahi-Kā-a-Rakataura / Mt Albert	Feedback from public that the the La Veta entranceway track on Owairaka is slippery and that people have been slipping on the track			Peripheral tracks on Owairaka require upgrading. Management are investigating potential options. People have been pulling down the barriers and ripping off signage.	The track has been closed until dry enough to reopen.

Hui report ed to	Maunga	Summary of incident	Number of any near misses	Outcome of investigations into any incidents and near misses	Health and Safety management matters arising	Actions Taken
					Incidents have been reported to police. Barriers replaced with a “track closed” sign	
Hui 56	Ōwairaka/ Te Ahi-Kā-a-Rakataura / Mt Albert	Member of public slipped on the road on a patch of lichen breaking their arm			Management are reviewing the road surface and investigating potential upgrades.	Management have made contact with the member of the public and advised of actions taken to remedy the situation. The lichen has been waterblasted using a non-potable water source.
Hui 55	Ōwairaka / Te Ahi-Kā-a-Rakataura / Mt Albert	Member of the public has allegedly been attacked by another member of the public on 6 June 2020.				CCTV footage for the day has been forwarded to the police as part of their investigation. Management continue to assist Police with their investigation where possible
Hui 54	Maungawhau/ Mt Eden	Large party held on the tihi of the maunga on the night of Friday 15 May 2020. Excessive smashed glass discovered in the morning over the tihi summit carpark				Incident reported to the police (incident number: OR-52891N) Glass Cleaned up and extra patrols organised for Saturday Night.
Hui 54	Ōwairaka/ Te Ahi-Kā-a-Rakataura / Mt Albert	2 Wasp nests discovered by biosecurity contractors. One near Archery Club, one near the summit road				Wasps nest treated with insecticide..

Hui report ed to	Maunga	Summary of incident	Number of any near misses	Outcome of investigations into any incidents and near misses	Health and Safety management matters arising	Actions Taken
Hui 53	Ōwairaka / Te Ahi-kā-a-Rakataura / Mt Albert	Reports received from members of the public that the protest group were undertaking surveillance of the campsite in breach of the COVID 19 level 4 lockdown rules. Further reports were received that there were people congregating in and around the campsite in breach of the lockdown rules. Reports received from public and confirmed by contractors that tents from the camp had been moved around and new protest signs erected at the camp in breach of the COVID 19 lockdown rules.				Officers removed the tents, marquees and the several truckloads of other camping equipment in accordance with the Reserves Act. They will be returned to the owners when the COVID 19 alert levels allow.
Hui 53	Maungarei	A grass fire was caused by fireworks. Incident number: F2983259. At approximately 1830 FENZ received reports that there were people letting off fireworks on and around the maunga. An appliance was sent to site but no fire was spotted. At 1923 the fire was reported and further appliances		FENZ have provided reports that the cause of the fire was fireworks – the initial call identified people with fireworks on the Maunga and the Incident Controller on the site at the time was of the opinion that fireworks were the cause.		A Tūpuna Maunga Officer was dispatched to site to provide information and support to FENZ. Tūpuna Maunga Authority issued a media release which called for the ban for the sales of Fireworks.

Hui report ed to	Maunga	Summary of incident	Number of any near misses	Outcome of investigations into any incidents and near misses	Health and Safety management matters arising	Actions Taken
		dispatched. an area of 60m by 30m was damaged as a result of the fire.				



Attachment B: Events Register

Hui reported to	Maunga	Applicant	Event Description	Event date	Status	Revenue
Hui 60	Ōhūiarangi	Blue Light ventures – young people obstacle course competition	Community	Friday 23 September	Approved	No Charge
Hui 59	Maungawhau /MT Eden Tahaki Reserve	Ficino School – Cross Country	Community	Wednesday 9 September 2020	Approved	No Charge
Hui 59	Maungauika/ North Head	Devonport Marathon	Commercial	Saturday 10 October	Approved	\$1200
Hui 57	Ōtahuhu/ Mt Richmond	Auckland Rugby League Club (live stream filming)	Community	Saturday 1 August	Approved	\$380
Hui 56	Pukewīwī / Puketāpapa / Mt Roskill	Puketāpapa Local Board – Manu Aute / Matāriki celebration	Community	Sunday 28 June Sunday 5 July Sunday 12 July	Approved	No Charge
Hui 56	Maungawhau/ MT Eden	Epsom Girls Grammar – Matāriki Karakia	Community	26 June	Approved	No Charge
Hui 55	Maungarei/ Mt Wellington	Dawn Raid Entertainment	Filming	10 June 2020	Approved	\$380
Hui 55	Te Pane a Mataoho/ Mangere Mountain	Dawn Raid Entertainment	Filming	8 June 2020	Approved	\$380

Hui reported to	Maunga	Applicant	Event Description	Event date	Status	Revenue
Hui 54	No Events	Hui 54	No Events	Hui 54	No Events	Hui 54
Hui 53	Takarunga	The Combined Churches of Devonport	Community	10/04/2020	Cancelled	
Hui 53	Mangere Mountain	The Mangere Catholic Parishes	Community	10/4/2020	Cancelled	
Hui 53	Puketāpapa/ Pukewīwī	Filipino Catholic Community	Community	10/4/2020	Cancelled	
Hui 52	Maungawhau / Tahaki reserve	Auckland Down Syndrome Association	Community	21/3/2020	Cancelled	
Hui 52	Maungauika	Atarau – Social Ritual	Community	21-22/03/2020		
Hui 52	Maungauika	ABC Films	Commercial	20-21/02/2020	Cancelled	\$600
Hui 52	Maungakiekie	Geraldine Bravo – Latin Women’s Association	Community	07/03/2020	Approved	-
Hui 52	Maungakiekie	Sophia Mahon – 1 <sup>st</sup> Birthday	Community	07/03/2020	Approved	-
Hui 52	Maungawhau	Salvation Army	Private/Commercial Filming	4/3/2020	Approved	\$450
Hui 52	Takarunga	Air New Zealand	Private/Commercial filming	9/2/2020	Approved	\$450

