

Date: Monday, 26 July 2021
Time: 3.00pm
Venue: Reception Lounge
 Level 2, Auckland Town Hall
 301 Queen Street, Auckland

TŪPUNA MAUNGA O TĀMAKI MAKĀURAU AUTHORITY

HUI 65 – 26 July 2021

Open Agenda

| | | |
|---------------------------|------------------------|---|
| Chairperson | Paul Majurey | Ngā Mana Whenua o Tāmaki Makāurau (Marutūāhu Rōpū) |
| Deputy Chairperson | Cr Alf Filipaina | Auckland Council (Governing Body) |
| Members | Cr Josephine Bartley | Auckland Council (Governing Body) |
| | Cr Dr Cathy Casey | Auckland Council (Governing Body) |
| | Toni Van Tonder | Auckland Council (Devonport-Takapuna Local Board) |
| | Chris Makoare | Auckland Council (Maungakiekie-Tāmaki Local Board) |
| | Lemauga Lydia Sosene | Auckland Council (Chair – Māngere-Ōtāhuhu Local Board) |
| | Hauāuru Rawiri | Ngā Mana Whenua o Tāmaki Makāurau (Marutūāhu Rōpū) |
| | Bernadette Papa | Ngā Mana Whenua o Tāmaki Makāurau (Ngāti Whātua Rōpū) |
| | Clay Hawke | Ngā Mana Whenua o Tāmaki Makāurau (Ngāti Whātua Rōpū) |
| | Zaelene Maxwell-Butler | Ngā Mana Whenua o Tāmaki Makāurau (Waiohūa-Tāmaki Rōpū) |
| | Dennis Kirkwood | Ngā Mana Whenua o Tāmaki Makāurau (Waiohūa-Tāmaki Rōpū) |

ITEM TABLE OF CONTENTS

1. Apologies
2. Declarations of Interest
3. Confirmation of minutes
4. Operational Plan 2021-22 and 10-year budget 2021 2031
5. Tūpuna Maunga planting update
6. Maunga furniture design
7. Puketāpapa Kite Day and Ficino School cross-country event permits
8. Quarter 4 Report
9. Mangere Bridge Playcentre Lease
10. Policy for Weddings on Tūpuna Maunga
11. Registers
 - A Health & Safety
 - B Events

(Quorum is 7 members, comprising the chair or deputy chair and 2 members appointed by the rōpū entities and 2 members appointed by Auckland Council)

Ngā Mana Whenua o Tāmaki Makaurau Collective Redress Act 2014

109 Functions and powers

- (1) The Maunga Authority has the powers and functions conferred on it by or under this Act or any other enactment.
- (2) In exercising its powers and carrying out its functions in relation to the maunga, the Maunga Authority must have regard to—
 - (a) the spiritual, ancestral, cultural, customary, and historical significance of the maunga to Ngā Mana Whenua o Tāmaki Makaurau; and
 - (b) section 41(2).
- (3) In exercising its powers and carrying out its functions in relation to the administered lands, the Maunga Authority must have regard to the spiritual, ancestral, cultural, customary, and historical significance of the administered lands to Ngā Mana Whenua o Tāmaki Makaurau.

[Emphasis added]

41 Maunga must remain as reserves vested in trustee

- (1) This section applies to each maunga once the maunga is—
 - (a) vested in the trustee under subpart 1, 2, or 3 of this Part;and
 - (b) declared a reserve under any of sections 18 to 29, 33, and 39.
- (2) The maunga is held by the trustee for the common benefit of Ngā Mana Whenua o Tāmaki Makaurau and the other people of Auckland.

...

[Emphasis added]



Key

- Tūpuna Maunga
- Local board boundaries and geographic areas

Tūpuna Maunga Reserve Status*

The following Tūpuna Maunga, with the relevant reserve status, are classified as reserves subject to the Reserves Act 1977

| Maunga | Reserve Status |
|---|---|
| Matukutūruru | Historic reserve |
| Maungakiekie / One Tree Hill | Recreation reserve |
| Maungarei / Mt Wellington | Recreation reserve, Local Purpose reserve |
| Maungawhau / Mount Eden | Historic reserve, Recreation reserve |
| Maungauika / North Head | Historic reserve |
| Ōwairaka / Te Ahi-kā-a-Rakataura / Mount Albert | Recreation reserve |
| Pukewīwī / Puketāpapa / Mount Roskill | Recreation reserve |
| Te Kōpuke / Tītīkōpuke / Mount St John | Recreation reserve |
| Ōhinerau / Mount Hobson | Recreation reserve |
| Ōhūiarangi / Pigeon Mountain | Historic reserve, Recreation reserve, Local Purpose reserve |
| Ōtāhuhu / Mount Richmond | Recreation reserve |
| Takarunga / Mount Victoria | Recreation reserve, Local Purpose reserve |
| Te Tātua-a-Riukiuta / Big King | Recreation reserve |
| Te Ara Pueru / Te Pane-o-Mataaho / Mangere Mountain | Historic reserve, Recreation reserve, Local Purpose reserve |
| Rarotonga / Mount Smart | Recreation reserve |

* See sections 18-29, 33 (repealed), 39, 41, 47, 53, 54, and Schedules 1 & 2, 6 of Ngā Mana Whenua o Tāmaki Makaurau Collective Redress Act 2014

Date:

Monday, 31 May 2021

Time:

3.07pm

Venue:

Reception Lounge

Level 2, Auckland Town Hall

301 Queen Street, Auckland

TŪPUNA MAUNGA O TĀMAKI MAKĀURAU AUTHORITY

HUI 64 – 31 May 2021

Open Minutes

Chairperson

Paul Majurey

Ngā Mana Whenua o Tāmaki Makaurau (Marutūāhu Rōpū)

Deputy Chairperson

Cr Alf Filipaina

Auckland Council (Governing Body)

Members

Cr Josephine Bartley

Auckland Council (Governing Body)

Cr Dr Cathy Casey

Auckland Council (Governing Body)

Toni Van Tonder

Auckland Council (Devonport-Takapuna Local Board)

Chris Makoare

Auckland Council (Maungakiekie-Tāmaki Local Board)

Bernadette Papa

Ngā Mana Whenua o Tāmaki Makaurau (Ngāti Whātua Rōpū)

Clay Hawke

Ngā Mana Whenua o Tāmaki Makaurau (Ngāti Whātua Rōpū)

APOLOGIES

Lemauga Lydia Sosene

Auckland Council (Chair – Māngere-Ōtāhuhu Local Board)

Hauāuru Rawiri

Ngā Mana Whenua o Tāmaki Makaurau (Marutūāhu Rōpū)

Zaelene Maxwell-Butler

Ngā Mana Whenua o Tāmaki Makaurau (Waiohūa-Tāmaki Rōpū)

Dennis Kirkwood

Ngā Mana Whenua o Tāmaki Makaurau (Waiohūa-Tāmaki Rōpū)

Note: In the absence of Chairperson P Majurey, Deputy Chairperson A Filipaina presided.

1. Apologies

MOVED by Member C Makoare, seconded by Cr C Casey

That the Tūpuna Maunga Authority:

- a) **accept** the apologies of Lemauga Lydia Sosene, Hauāuru Rawiri, Zaelene Maxwell-Butler and Dennis Kirkwood for absence.

CARRIED

2. Declarations of Interest

There were no declarations of interest.

3. Confirmation of Minutes

MOVED by Member C Makoare, seconded by Cr C Casey

That the Tūpuna Maunga Authority:

- a) **confirm** the minutes of Hui 62 held on Monday, 22 March 2021, as a true and accurate record.

CARRIED

4. Tūpuna Maunga o Tāmaki Makaurau Authority Draft Operational Plan 2021/22 and 10-year Budget 2021-2031

MOVED by Deputy Chairperson A Filipaina , seconded by Member B Papa

That the Tūpuna Maunga Authority:

- a) **approve** the Tūpuna Maunga Authority Operational Plan 2021/22 (Attachment A) and the summary of the Tūpuna Maunga Authority Operational Plan 2021/22 (Attachment B).
- b) **delegate** authority to the Head of Co-governance to incorporate into the Operational Plan maps and photographs and any further minor typographical changes that may be identified.
- c) **note** the Auckland Council Governing Body will be invited to jointly approve the Tūpuna Maunga Authority Operational Plan 2021/22 and the summary of the Tūpuna Maunga Authority Operational Plan 2021/22 for inclusion in the Annual Plan 2021/22.

CARRIED

5. Tūpuna Maunga Authority: Quarter 3 Report

MOVED by Member C Makaore , seconded by Deputy Chairperson A Filipaina

That the Tūpuna Maunga Authority:

- a) **note** the attached 3rd Quarter Report for the 2020/21 financial year.

CARRIED

6. Tūpuna Maunga planting update

MOVED by Member T Van Tonder, seconded by Member B Papa

That the Tūpuna Maunga Authority:

- a) **note** the report

CARRIED

7. Registers

MOVED by Chairperson P Majurey, seconded by Deputy Chairperson A Filipaina

That the Tūpuna Maunga Authority:

- a) **note** the attached Registers, which have been updated since Hui 62 (22 March 2021).

CARRIED

Member Clay Hawke closed Hui 64.

3.35 pm

The Chairperson thanked members for their attendance and attention to business and declared the meeting closed.

CONFIRMED AS A TRUE AND CORRECT RECORD AT A
MEETING OF THE TŪPUNA MAUNGA O TĀMAKI
MAKAURAU AUTHORITY HELD ON

DATE:.....

CHAIRPERSON:.....

Open Agenda

1. Apologies

No apologies had been received at the close of the agenda.

2. Declarations of Interest

Members are reminded of the need to be vigilant to stand aside from decision making when a conflict arises between their role as a member and any private or other external interest they might have.

3. Confirmation of Minutes

- a. **confirm** the minutes of Hui 65 held on Monday, 31 May 2021, as a true and accurate record.

Operational Plan 2021-22 and 10-year budget 2021-2031

Authors: Dominic Wilson, Nicholas Turoa, Tūpuna Maunga Authority

| | |
|------------------------|--|
| Purpose | To update on the Tūpuna Maunga Authority's Operational Plan 2021/22 |
| Recommendations | That the Tūpuna Maunga Authority: a. note that the Tūpuna Maunga Authority's Operational Plan 2021/22 has been agreed. |

1. At Hui 64 (31 May 2021), the Authority unanimously adopted the Tūpuna Maunga Authority's Operational Plan 2021-22 and the Summary including the 10-year budget 2021-2031.
2. On 29 June 2021, Auckland Council unanimously agreed the Tūpuna Maunga Authority's Operational Plan 2021-22 and the Summary and the 10-year budget 2021-2031.
3. These documents are now agreed in terms of s60(1) of Ngā Mana Whenua o Tāmaki Makaurau Collective Redress Act 2014.
4. The final version will be provided by Management.

Tūpuna Maunga planting update

Authors: Jordan Winiata – Kaihautū Tiaki Koiora

| | |
|------------------------|---|
| Purpose | To update the Tūpuna Maunga Authority on the 2021 restoration planting programme. |
| Recommendations | That the Tūpuna Maunga Authority: a. note the report |

Restoration Planting Programme

1. As discussed at Hui 64 (31 May 2021), the ongoing restoration programme of planting native plants continues on Ngā Tūpuna Maunga.
2. Two of the key principles in the Tūpuna Maunga Integrated Management plan highlight the importance of restoring the Tūpuna Maunga with indigenous ecosystems, to reintroduce and attract indigenous and culturally appropriate species, and to nurture and enhance the living connections between the Tūpuna Maunga and other areas of indigenous biodiversity in Tāmaki Makaurau.
3. A total of 40,125 plants will be planted this year across 8 Tūpuna Maunga: Matukutūruru/Wiri Mountain, Maungarei/Mount Wellington, Ōhūiarangi/Pigeon Mountain, Ōtāhuhu/Mount Richmond, Ōwairaka/Te Ahi-kā-a-Rakataura/Mount Albert, Maungawhau/Mount Eden, Pukewīwī/Puketāpapa/Mount Roskill and Te Pane a Matāoho/Te Ara Pueru/Māngere Mountain between May – August 2021.
4. These plantings add to the 65,860 plants already planted over the last 2 years (a total of 105,985 plants).
5. The table below indicates the proposed planting details:

| Tūpuna Maunga | Total plants | Potential Attendees | Planting Day(s) (2021) |
|------------------------------|---------------------|--|--|
| Matukutūruru/Wiri Quarry | 4,505 | Ngā Mana Whenua, Department of Corrections, Department of Conservation, Specialist contractors | May 26 onwards |
| Maungarei / Mt Wellington | 2,130 | Specialist contractors | 7 July onwards |
| Ōhūiarangi / Pigeon Mountain | 10,755 | Ngā Mana Whenua, Local schools, local community groups, Community | 18 June (Schools planting), 26 June (Community planting) |
| Ōtāhuhu / Mt Richmond | 7,695 | Ngā Mana Whenua, Schools, local community groups, Sports club, Local businesses, Community, Specialist contractors | 3 July and 1 August (Community planting) |

| Tūpuna Maunga | Total plants | Potential Attendees | Planting Day(s) (2021) |
|---|--------------|--|---|
| Ōwairaka / Te Ahikā a Rakataura / Mt Albert | 235 | Specialist contractors | 13 July onwards |
| Te Pane a Matāoho / Te Ara Pueru / Māngere Mountain | 9,171 | Ngā Mana Whenua, Schools, local community groups, Sports club, Local businesses, Community, Specialist contractors | 11 June (Schools planting), Saturday 12 June and 21 August (Community planting event) |
| Maungawhau / Mt Eden | 735 | Specialist contractors | 17 May onwards |
| Puketāpapa / Pukewīwī / Mt Roskill | 4,899 | Ngā Mana Whenua, Local community groups, Community, Specialist contractors | 24 July (Community planting) |

- The Maunga will be planted with the appropriate plant species within the guidance of ecosystem type, site suitability and fire retardant and archaeologically appropriate species.
- For health and safety reasons, there are some Maunga with planting sites that can only be planted using specialist contractors with the right qualifications, PPE and equipment.
- Community and schools planting dates were best aligned with the Maramataka. Where dates don't align with the Maramataka, this was due to the limits of contractor availability, schools availability and weekend planting dates.
- The multi-year planting programme will continue in 2022 and onwards.

Community Planting Days

- To this date, three community planting days were undertaken each on Te Pane a Matāoho/Te Ara Pueru/Māngere Mountain, Ōhūiarangi/Pigeon Mountain and Ōtahuhu/Mt Richmond. Roughly 80 volunteers planted on Te Pane a Matāoho/Te Ara Pueru/Māngere Mountain, 50 volunteers planted on Ōhūiarangi/Pigeon Mountain and 20 volunteers planted on Ōtahuhu/Mt Richmond.
- The community planting days have been well received with groups of enthusiastic volunteers braving the cold winter mornings to plant on the Maunga.
- About 50 Rongoā students from Te Wānanga o Aotearoa helped plant on Te Pane a Matāoho/Te Ara Pueru/Māngere Mountain. The interest and engagement in the planting day demonstrated by Te Wānanga o Aotearoa indicates a potential future partnership opportunity.
- Two schools plantings were undertaken each on Te Pane a Matāoho/Te Ara Pueru/Māngere Mountain and Ōhūiarangi/Pigeon Mountain. In total, 46 Kahui ako (Enviroschool) students from a mix of schools including students from Māngere Bridge School, Waterlea School, Royal Oak Intermediate, Marcellin College, Te Papapa School and Onehunga High School planted on Matāoho/Te Ara Pueru/Māngere Mountain. On

Ōhūiarangi, 358 registered students from 9 different schools in the Howick ward planted nearly 5,000 plants.

14. Positive feedback was received from the teachers of these schools expressing how valuable it was for their students to have this opportunity to connect to their local Maunga through restorative planting and how much they would love the opportunity to be involved in future planting opportunities.

Next steps

15. Continue with the ongoing restoration programme

Attachments

Attachment A: Matukutūruru/Wiri Quarry planting day

Attachment B: Te Pane o Mataoho/Te Ara Pueru/Māngere Mountain schools planting

Attachment C: Te Pane o Mataoho/Te Ara Pueru/Māngere Mountain community planting

Attachment D: Ōhūiarangi/Pigeon Mountain schools planting

Attachment E: Ōhūiarangi/Pigeon Mountain community planting

Attachment F: Ōtāhuhu/Mt Richmond community planting

Attachment A: Matukutūruru/Wiri Quarry planting day



Attachment B: Te Pane o Matacho/Te Ara Pueru/Māngere Mountain schools planting



Attachment C: Te Pane o Mataoho/Te Ara Pueru/Māngere Mountain community planting



Attachment D: Ōhuirangi/Pigeon Mountain schools planting



Attachment E: Ōhūiarangi/Pigeon Mountain community planting



Attachment F: Ōtāhuhu/Mt Richmond community planting



Maunga furniture design

Author: Liz Parkin, Kaihautū Hōtaka

| | |
|-----------------------|---|
| Purpose | To recommend the adoption of a suite of outdoor furniture for installation across the Tūpuna Maunga. |
| Recommendation | That the Tūpuna Maunga Authority: <ul style="list-style-type: none">a. approve the design and intent of the furniture suite as presented. |

Background

1. The Authority have inherited a diverse collection of seats, tables bollards and bins across the Maunga. Many of these are reaching the end of the useful lives or are inappropriately located.
2. This paper presents designs for furniture to be installed across the Maunga whenever new or replacement furniture is required. The designs reflect the values of the Integrated Management Plan, and take the following considerations into account:
 - a. Sustainability and materials sourcing
 - b. Durability
 - c. Tikanga
 - d. Universal design criteria.

Statutory and other considerations

3. Any decision to determine management within a reserve must take into account the legislative and policy framework.
4. The Authority administers the Tūpuna Maunga under the Reserves Act 1977 and pursuant to Ngā Mana Whenua o Tāmaki Makaurau Collective Redress Act 2014. The Hauraki Gulf Marine Park Act 2000 is also relevant.
5. Section 109(2) of Ngā Mana Whenua o Tāmaki Makaurau Collective Redress Act 2014 requires the Authority to have regard to the spiritual, ancestral, cultural, customary, and historical significance of the Maunga to Ngā Mana Whenua o Tāmaki Makaurau and that the Tūpuna Maunga is held in trust for Ngā Mana Whenua and the other people of Auckland.
6. The Tūpuna Maunga Authority's Integrated Management Plan (IMP) was adopted by the Authority in terms of Ngā Mana Whenua o Tāmaki Makaurau Collective Redress Act 2014 and the Reserves Act 1977. The Integrated Management Plan describes a series of "Values" and "Pathways" that guide all activities on the Tūpuna Maunga. The primary focus of the IMP is to protect the health and well-being of the Tūpuna Maunga.

7. The Tūpuna Maunga Authority adopted the Tūpuna Maunga Strategies at Hui 50 on 25 September 2020. The Tūpuna Maunga Strategies are 7 key sections that outline the strategic direction with regards to education, Biodiversity, Tūpuna Maunga design, Recreation, commercial activities and monitoring. Together with the IMP, these strategies inform guide and manage the activities undertaken on the Maunga.
8. The following principles are taken from the Tūpuna Maunga Integrated Management Plan Design Strategy and have informed the furniture design:
 - 4.2.2 *All development will respect and maintain, and where appropriate, enhance and restore the mana of the Maunga.*
 - 4.2.4 *Development will be restricted to that which is necessary to serve the values of the Maunga and the needs of both Mana Whenua and manuhiri (visitors) to the Maunga.*
 - 4.2.6 *Development materials and structures will seek to minimise impact on the Maunga and to achieve whole-of-life sustainability including a consideration of decommissioning.*
 - 4.2.7 *Materials, colours and scale of development will be appropriate to the context and reflect the natural and/or cultural environment of the locality.*
9. The Strategy also notes that seats and other facilities at arrival areas or other areas of interest be designed to provide for all visitor mobility types.

The Collection

10. Attachment A illustrates the basic designs of the furniture for approval.
11. The furniture will be constructed of New Zealand or Australian grown FSC® certified saligna, and protected with a natural, non-toxic oil.
12. There are opportunities to customise the furniture with colour and traditional patterns such as taniko and kowhaiwhai.
13. Where possible natural elements such as rocks and logs will be used to complement the built furniture.
14. There are opportunities to incorporate artwork into the furniture itself or into the natural stone and timber seating. Where this is proposed, management will work with the Tūpuna Taonga Trust and Ngā Mana Whenua o Tāmaki Makaurau to identify designs or artists suitable for the project.

Attachments

Attachment A: Furniture collection

Attachment A: Proposed furniture



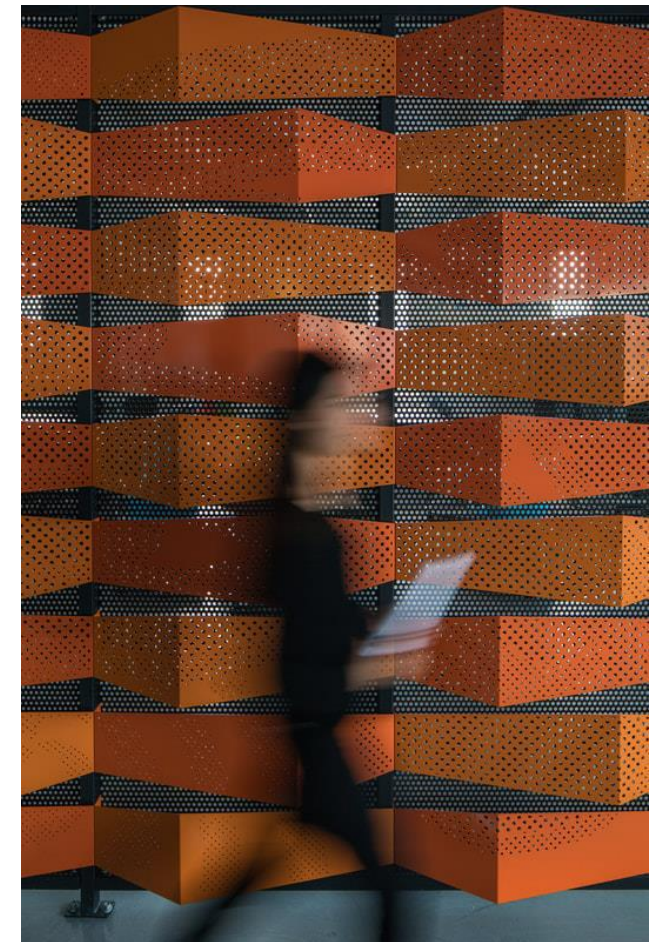
A



B



C



Puketāpapa Kite Day and Ficino School cross-country event permits

Author: Brooke Waterson, Kaiwhakahono Kaupapa

| | |
|------------------------|--|
| Purpose | <p>The purpose of this report is to consider multi-year (2021-2026) event permits for:</p> <ol style="list-style-type: none">Puketāpapa Manu Aute Kite Day, delivered by Fresh Concept creative agency/Puketāpapa Local Board; andFicino School cross-country. |
| Recommendations | <p>That the Tūpuna Maunga Authority:</p> <ol style="list-style-type: none">resolve to grant a five year permit to the Puketāpapa Local Board and Ficino School to hold their events at the respective locations, Pukewīwī/ Puketāpapa / Mount Roskill and Tahaki Reserve (Maungawhau / Mt Eden) and subject to usual Authority conditions and such further conditions that may become necessary.resolve to waive the event permit fees in accordance with the events policy.note management will work with the respective groups to establish dates for the future events and monitor and report on each of the events when they occur. |

Background

1. The Tūpuna Maunga Events Rōpū has in previous years approved applications for both: the Puketāpapa Local Board Manu Aute Kite Day, held on Puketāpapa / Pukewīwī / Mt Roskill, and the Ficino School Cross Country, held in Tahaki Reserve (Maungawhau / Mt Eden).
2. Management recommends that each of the applicants be granted a five-year permit from 2021.

Statutory and other considerations

3. This paper relates to Maungawhau/Mount Eden (Historic and Recreation reserves) and Pukewīwī / Puketāpapa / Mt Roskill (Recreation reserve).
4. Clause 2.3 of the Ngā Mana Whenua o Tāmaki Makaurau Collective Redress Deed 2012 states:
“2.3 The Tāmaki Makaurau collective legislation will, on the terms provided by section 43 of the draft bill, direct the Registrar-General to record on any computer freehold register for each Maunga that the iwi and hapū of Ngā Mana Whenua o Tāmaki Makaurau specified for that Maunga in

table 1 of part 3 of the property redress schedule have spiritual, ancestral, cultural, customary and historical interests in the Maunga.”

5. The Collective Deed Property Redress Schedule contains the table referred to in clause 2.3, and the iwi/hapū having spiritual, ancestral, cultural, customary and historical interests in the Maunga are as follows:

| | | |
|--|--|--|
| Maungawhau / Mount Eden | Ngāi Tai ki Tāmaki Ngāti Maru Ngāti Pāoa Ngāti Tamaoho Ngāti Tamaterā Ngāti Te Ata Ngāti Whanaunga | Ngāti Whātua Orākei Ngāti Whatua o Kaipara Te Ākitai Waiohū Te Kawerau ā Maki Te Patukirikiri Te Rūnanga o Ngāti Whātua |
| Puketāpapa / Pukewīwī / Mt Roskill | Ngāi Tai ki Tāmaki Ngāti Maru Ngāti Tamaoho Ngāti Tamaterā Ngāti Te Ata | Ngāti Whātua Orākei Ngāti Whatua o Kaipara Te Ākitai Waiohū Te Kawerau ā Maki Te Rūnanga o Ngāti Whātua |

6. Any decision to determine management within a reserve must take into account the legislative and policy framework.
7. The Authority administers the Tūpuna Maunga under the Reserves Act 1977 and pursuant to Ngā Mana Whenua o Tāmaki Makaurau Collective Redress Act 2014. The Hauraki Gulf Marine Park Act 2000 is also relevant.
8. Section 109(2) of Ngā Mana Whenua o Tāmaki Makaurau Collective Redress Act 2014 requires the Authority to have regard to the spiritual, ancestral, cultural, customary, and historical significance of the Maunga to Ngā Mana Whenua o Tāmaki Makaurau and that the Tūpuna Maunga is held in trust for Ngā Mana Whenua and the other people of Auckland.
9. The Tūpuna Maunga Authority’s Integrated Management Plan (IMP) was adopted by the Authority in terms of Ngā Mana Whenua o Tāmaki Makaurau Collective Redress Act 2014 and the Reserves Act 1977. The Integrated Management Plan describes a series of “Values” and “Pathways” that guide all activities on the Tūpuna Maunga. The primary focus of the IMP is to protect the health and well-being of the Tūpuna Maunga.
10. The Tūpuna Maunga Authority adopted the Tūpuna Maunga Strategies at Hui 50 on 25 September 2020. The Tūpuna Maunga Strategies are 7 key sections that outline the strategic direction with regards to education, Biodiversity, Tūpuna Maunga design, Recreation, commercial activities and monitoring. Together with the IMP, these strategies inform guide and manage the activities undertaken on the Maunga.
11. The Tūpuna Maunga are within the catchments that support the Hauraki Gulf. The purpose of the Hauraki Gulf Marine Park Act 2000, among other matters, is to “recognise the historic, traditional, cultural, and spiritual relationship of the tangata whenua with the Hauraki Gulf”.

Proposed Activity

12. The Puketāpapa Local Board Manu Aute Kite Day is an annual Matariki event open to the community. It is held at the tihi of Puketāpapa / Pukewīwī / Mt Roskill, and includes kite

flying, performances, workshops, and other free activities. The Tūpuna Maunga Authority usually has an information stall at this event. There are usually 500 to 2000 attendees.

13. The Ficino School Cross Country event is an annual event held on Tahaki Reserve, Maungawhau / Mt Eden. The route of the run is on sealed and modified surfaces. The event involves around 200 attendees, with students, teachers, and parent helpers.

Access Requirements

14. The Puketāpapa Local Board Manu Aute Kite Day requires road closures on the Maunga.
15. There are no access requirements for the Ficino School Cross Country event.

Mana Whenua Feedback

16. Mana Whenua have been engaged on each of the applications by the respective groups. To date there has only been positive feedback from mana whenua supporting each of the events to 2021.

Monitoring and Compliance

17. Note that the management team will work with these groups annually to monitor and report on their events.

Event Policy Considerations

18. In accordance with the Delegation and Mana Whenua Consultation Thresholds the Puketāpapa Local Board Manu Aute Kite Day event is considered a **major** event. Major events are described as events that:

- Any major event or a significant annual event with substantial changes in scale, nature and/or activity.

19. In accordance with the Delegation and Mana Whenua Consultation Thresholds the Ficino School Cross Country event is considered a **medium** event. Medium events are described as events that:

- Involve more than 100 people on: Tahaki Reserve on Maungawhau/Mt Eden; the area between the Stardome Observatory and Manukau Road on Maungakiekie/One Tree Hill; and the sports fields on Owairaka/Te Ahi-kā-a-Rakataura/Mt Albert, Ōhūiarangi/Pigeon Mountain, Maungauika/North Head, Pukewīwī/Puketāpapa/Mt Roskill and Te Pane o Mataoho / Te Ara Pueru / Māngere Mountain or involve more than 50 people on all other locations.
- Are for more than 4 hours.
- Involve road closures or ticketing.
- Have potential to have a more than minor impact on the reserve values and infrastructure, or trigger other consent requirements
- Are likely to have a more than minor disruption to the park operations, park visitors and/or neighbouring properties.

20. Typically, the Tūpuna Maunga Event Rōpū can approve medium events. However, the Event Rōpū may refer multi-year events to the full authority for their consideration.
21. The applicants have requested a fee waiver for their event. Applicants can apply for a fee waiver if:
- the 'community' applicant can demonstrate a positive contribution to the relationship of Mana Whenua with the Tūpuna Maunga, or
 - the activity is led or sponsored by the iwi/hapū of Ngā Mana Whenua o Tāmaki Makaurau (where not a specified cultural activity), the Maunga Authority or Auckland Council (Governing Body and Local Boards)
22. Management recommends that the fees be waived for the event and request that each of the groups attend a volunteer day to pick up rubbish on the Maunga or a planting day.

Proposed Conditions

23. Management have considered these applications and do not believe there will be any negative impacts on the Maunga.
24. Management proposes the following conditions for the Puketāpapa Local Board Manu Aute Kite Day:
- The Tūpuna Maunga are Alcohol and Smoke free spaces. Alcohol and Smoking is NOT permitted at all time during this activity.
 - Applicant to provide a health and safety plan for this event.
 - The Applicant must provide a waste management plan and ensure that no rubbish is left on the Maunga.
 - Access to the tihi will be granted for two vehicles at a time. The event organiser will supply the license plate for the vehicles
 - A mana whenua representative determined by the Tūpuna Maunga Authority will be present during all filming. Any expenses incurred for this cultural monitoring will be paid for by the Applicant.
 - All ezi ups must be weighted rather than pegged.
 - Public access to the Maunga must be made available at all times during the event.
 - Public acknowledgement of the Tūpuna Maunga Authority and Ngā Mana Whenua o Tāmaki Makaurau for allowing the event to occur.
 - No commercial activities or sale of food on the Tihi (summit of the Maunga).
 - The organiser shall ensure that nothing is fixed, hung or otherwise attached to any features of the Maunga (e.g. trees, street furniture, lamp-posts, etc.) without the prior consent of the Maunga Authority or its delegate.

- The Event Organiser is liable for remedial works including dead grass that may occur as a result of the event. All re-establishment works will be fit for purpose and only ensure the asset is re-instated to the same condition prior to the event.
- Drone to be flown safely in accordance with the Authority's Drone's policy.
- The organiser must produce a travel plan to demonstrate how they will mitigate traffic congestion.
- All communication, signage and documentation is to use the formally recognised ancestral names of the Maunga.

25. Management proposes the following conditions for the Ficino School Cross Country event:

- The Tūpuna Maunga are Alcohol and Smoke free spaces. Alcohol and Smoking is NOT permitted at all time during this activity.
- Applicant to provide a health and safety plan for this event.
- The Applicant must provide a waste management plan and ensure that no rubbish is left on the Maunga.
- All ezi ups must be weighted rather than pegged.
- All participants must only run-on existing pathways.
- No road closures are supported as part of the application.
- Public access to the Maunga/reserve must be made available at all times during the event.
- The Event Organiser is liable for remedial works including dead grass that may occur as a result of the event. All re-establishment works will be fit for purpose and only ensure the asset is re-instated to the same condition prior to the event.
- The organiser shall ensure that nothing is fixed, hung or otherwise attached to any features of the Maunga (e.g. trees, street furniture, lamp-posts, etc.) without the prior consent of the Maunga Authority or its delegate.
- Public acknowledgement of the Tūpuna Maunga Authority and Ngā Mana Whenua o Tāmaki Makaurau for allowing the event to occur.
- All communication, signage and documentation is to use the formally recognised ancestral names of the Maunga.

Next steps

26. If the Tūpuna Maunga Authority resolves to approve these events, Management will work with the event organisers to finalise the event dates.

27. Management will continue to monitor the events and report back to the Tūpuna Maunga Authority through the Events Register.

Attachments

Attachment A: Site map for the Puketāpapa Local Board Manu Aute Kite Day (2020)

Attachment B: Site map for the Ficino School Cross Country event

Attachment A: Site map for the Puketāpapa Local Board Manu Aute Kite Day
(2020)



Attachment B: Site map for the Ficino School Cross Country event

2021 Cross Country Map

Children are to run on the path only (council requirements)



NE = 1/2 a lap

Y1 and Y2 = 1 x small lap

Y3 = 2 x small lap

Y4 = 3 x small lap

Year 5 & 6 = 1 x big lap and 1 small lap

Year 7/8 = 2 x big lap

Tūpuna Maunga Authority Quarter 4 Report

Author: Leigh Collecutt, Kaiwhakahaere Tūpuna Maunga

| | |
|------------------------|---|
| Purpose | To provide the Tupuna Maunga Authority with the Quarterly Report for the fourth quarter of the 2020/21 financial year. |
| Recommendations | That the Tūpuna Maunga Authority: a. note the attached 4 th Quarter Report for the 2020/21 financial year. |

Latest Quarterly Report

1. Attached is the Tūpuna Maunga Authority Quarterly Report for the fourth quarter of the 2020/21 financial year.

Attachments

A: Tūpuna Maunga Authority Quarter 4 Report.



QUARTER 4 REPORT

As at 30 June 2021

CONTENTS

1. Key highlights

2. Tūpuna Maunga – key objectives and Maunga-specific work programme

3. Financials

3.1 Operating revenue and costs

3.2 Capital projects

1. Key highlights in this quarter:

- **Planting Season** – planting season commenced in June 2021, with a number of school and community events being held across the Maunga network
- **Operational Plan adopted** – The Tūpuna Maunga Operational Plan 21/22 was adopted by the Governing Body on 29 June, confirming the Authority's forward budgets and work programmes for the financial year.

2. Tūpuna Maunga key activities and Maunga-specific work programmes

This section of the Performance Report lists each of the Tūpuna Maunga and the key activities undertaken this quarter:

| | |
|------------------------------|---|
| Matukutūruru / Wiri | <p>Pest and weed control focus on possums and ecological weeds.</p> <p>Corrections partnership – weekly work continues on the Maunga every Tuesday.</p> |
| Maungakiekie / One Tree Hill | <p>Ongoing monitoring of tihi planting.</p> <p>Continued rabbit eradication programme with night shooting.</p> <p>Pest and weed control focus on rats, possums and ecological weeds continues.</p> <p>Maungakiekie Birdsong Project supported by TMA operations, with funding provided to create halo around the Maunga.</p> <p>Stardome Māra Kai planted with huawhenua.</p> <p>Firebreaks work.</p> |
| Maungarei / Mt Wellington | <p>Pest and weed control focus on rats, possums and ecological weeds.</p> <p>Continued rabbit eradication programme with night shooting.</p> <p>Restoration planting management and reporting undertaken.</p> <p>Firebreaks work.</p> |
| Maungauika/North Head | <p>Pest and weed control focus on rats and ecological weeds continues.</p> <p>Volunteers continue with trapping and baiting schedule on the Maunga.</p> <p>Ki o rahi tournament held 19 May 2021.</p> <p>Devonport Peninsula Trust – Restoring Takarunga Hauraki/ Ngā Manu Maungauika Project supported by TMA operations, with funding provided to create trapping halo around the Maunga.</p> <p>Box steps completed on Western side of the Maunga.</p> |

| | |
|---|--|
| Maungawhau / Mt Eden | <p>Pest and weed control focus on rats and ecological weeds continues.</p> <p>Continued rabbit control for rabbit eradication programme with night shooting and monitoring in the Tahaki Reserve.</p> <p>Work continues on peripheral tracks.</p> <p>Firebreaks work.</p> <p>Batger Quarry Retaining Wall Stability assessment and tiltmeter set up monitoring commenced.</p> <p>Māra kai kumara harvested.</p> |
| Ōhinerau / Mt Hobson | <p>Continued rabbit control for rabbit eradication programme with night shooting.</p> <p>Pest and weed control focus on rats, possums and ecological weeds.</p> <p>Firebreaks work.</p> |
| Ōhūiarangi/Pigeon Mountain | <p>Pest and weed control focus on rats, possums and ecological weeds.</p> <p>Restoration planting management and reporting undertaken.</p> <p>School planting day held, with 9 schools and approximately 350 people attending to plant on the Maunga on 18 June 2021.</p> <p>Community Planting day held on 26 June 2021.</p> <p>Small planting event held in partnership with Pigeon Mountain Kindergarten and parents.</p> |
| Ōtāhuhu / Mt Richmond | <p>Continued rabbit control for rabbit eradication programme with night shooting.</p> <p>Pest and weed control focus on rats, possums and ecological weeds.</p> <p>Planting maintenance and reporting.</p> <p>Firebreaks work.</p> <p>Capital works continue including reinstatement works and gates.</p> |
| Ōwairaka / Te Ahi-Ka-Rakataura /Mt Albert | <p>Pest and weed control focus on possums and ecological weeds.</p> <p>Planting maintenance and reporting.</p> <p>Peripheral track scoping begins.</p> <p>Firebreaks work.</p> |
| Pukewīwī / Puketāpapa / Mt Roskill | <p>Pest and weed control focus on rats, possums and ecological weeds.</p> <p>Firebreaks work.</p> <p>Puketāpapa Local Board held the Puketāpapa Manu Aute Kite Day on 26 June.</p> |

| | |
|--|--|
| Takarunga / Mt Victoria | <p>Pest and weed control focus on rats, possums and ecological weeds.</p> <p>Firebreaks work.</p> <p>Work on damaged gun fence completed.</p> |
| Te Kōpuke / Tītīkōpuke / Mt St John | <p>Pest and weed control focus on ecological weeds, rats and possum.</p> <p>Firebreaks work.</p> |
| Te Pane-o-Mataaho/ Te Ara Pueru / Māngere Mountain | <p>Pest and weed control focus on ecological weeds and rats.</p> <p>Plantings maintenance and reporting.</p> <p>Continued rabbit control and monitoring for rabbit eradication programme with night shooting.</p> <p>Firebreaks work.</p> <p>Sustainable Schools Leadership hikoi held 22 April.</p> <p>School planting day held 11 June, with 6 schools and approximately 60 people in attendance.</p> <p>Community planting day held 12 June, with a number of classes from Te Wananga o Aotearoa in attendance.</p> |
| Te Tātua-a-Riukiuta / Big King | <p>Pest and weed control focus on ecological weeds, rats and possums trapping.</p> <p>Firebreaks work.</p> <p>Fyvie Entrance stairs re-build and track completed.</p> <p>Boxed steps west side of the reservoir completed.</p> |

3.0 FINANCIALS

3.1 Operating revenue and costs

TŪPUNA MAUNGA O TĀMAKI MAKĀURAU AUTHORITY

Operating Revenue and Expenditure for Quarter 4 as at 30 June 2021

| | Actual Qtr 3 \$'000 | Budget Qtr 3 \$'000 | Variance Qtr 3 \$'000 | Actual YTD \$'000 | Budget YTD \$'000 | Variance YTD \$'000 |
|-----------------------------|---------------------------|---------------------------|-----------------------------|-------------------------|-------------------------|---------------------------|
| Operating Revenue | -25 | -54 | -30 | -243 | -222 | 21 |
| Operating Expenditure | 1,224 | 1,343 | 119 | 4,428 | 5,550 | 1,122 |
| Governance Costs | 26 | 39 | 12 | 121 | 155 | 34 |
| Net Operating Result | 1,226 | 1,328 | 102 | 4,307 | 5,484 | 1,177 |

TŪPUNA MAUNGA O TĀMAKI MAKĀURAU AUTHORITY

Operating Revenue and Expenditure for Quarter 4 as at 30 June 2021

| | Actual Qtr 3 \$'000 | Budget Qtr 3 \$'001 | Variance Qtr 3 \$'000 | Actual YTD \$'000 | Budget YTD \$'000 | Variance YTD \$'000 |
|--|---------------------------|---------------------------|-----------------------------|-------------------------|-------------------------|---------------------------|
| Fees and user charges revenue | -13 | -13 | 0 | -54 | -52 | 2 |
| Property rental revenue | -11 | -41 | -30 | -189 | -169 | 19 |
| Operating Revenue | -25 | -54 | -30 | -243 | -222 | 21 |
| Repairs and maintenance & Outsourced works | 488 | 607 | 119 | 1,982 | 2,423 | 441 |
| Professional services | 64 | 158 | 94 | 206 | 562 | 356 |
| Other expenditure on activities | 672 | 579 | -93 | 2,241 | 2,566 | 326 |
| Operating Expenditure | 1,224 | 1,343 | 119 | 4,428 | 5,550 | 1,122 |
| Governance Costs | 26 | 39 | 12 | 121 | 155 | 34 |
| Net Operating Result | 1,226 | 1,328 | 102 | 4,307 | 5,484 | 1,177 |

Financial Commentary:

Operating Revenue for the year ended 30 June 2021 was slightly higher than budget due to increased funding during the year relating to Mangere Education centre.

Operating Expenditure for the year ended 30 June 2021 was lower than budget due to COVID-19 causing slowdown in progressing work and lower than budgeted rodent and pest control costs.

3.2 Capital projects

TŪPUNA MAUNGA O TĀMAKI MAKĀURAU AUTHORITY

Capital Projects Expenditure for Quarter 4 as at 30 June 2021

| | Actual YTD \$'000 | Budget YTD \$'000 | Variance YTD \$'000 | FY Budget (incl c/fwd) \$'000 |
|-------------------------------|-------------------------|-------------------------|---------------------------|-------------------------------------|
| Total Capital Projects | 3,183 | 8,913 | 5,730 | 8,913 |

Financial Commentary:

Capital Expenditure for the year ended 30 June 2021 was small as the work programmes were impacted by COVID-19, however they continue into the new financial year.

Mangere Bridge Playcentre Lease

Author: Leigh Collecutt Kaiwhakahaere Tūpuna Maunga

| | |
|------------------------|---|
| Purpose | This report recommends that the Tūpuna Maunga Authority offer the Mangere Bridge Playcentre a lease on Te Pane o Mataoho / Te Ara Pueru / Māngere Mountain |
| Recommendations | <p>That the Tūpuna Maunga o Tāmaki Makaurau Authority</p> <ol style="list-style-type: none">resolve to grant a new lease to the Mangere Bridge Playcentre for a term beginning 01 August 2021 and ending on 31 July 2022.delegate to the Chair and Deputy Chair the power to execute a lease, including a Maunga Outcomes Plan, with the Mangere Bridge Playcentre at a market rental (as determined by a registered valuer) and otherwise on the standard terms and conditions; anddelegate to the Chair and Deputy Chair the power to agree to terms governing the termination arrangements of the Mangere Bridge Playcentre should the Club decide not to accept the new lease. |

Background

1. The previous Mangere Bridge Playcentre (the Playcentre) lease was inherited by the Tūpuna Maunga Authority. This lease was originally with the Manukau City Council (predecessor to Auckland Council) and was drafted in accordance with that council's policy at the time.
2. The Club occupies an area of Te Pane o Mataoho / Te Ara Pueru / Māngere Mountain which is classified as a Local Purpose Reserve.
3. The Club owns and maintains the building that they currently occupy.
4. The lease expires on 31 July 2021.

Statutory and other considerations

5. This paper updates the Authority on an area of Te Pane o Mataoho / Te Ara Pueru / Māngere Mountain under lease to the Mangere Bridge Playcentre. The location of the current leased area is shown below.
6. Clause 2.3 of the Ngā Mana Whenua o Tāmaki Makaurau Collective Redress Deed 2012 states:

“2.3 The Tāmaki Makaurau collective legislation will, on the terms provided by section 43 of the draft bill, direct the Registrar-General to record on any computer freehold register for each maunga that the iwi and hapū of Ngā Mana Whenua o Tāmaki Makaurau specified for that maunga in table 1 of part 3 of the property redress schedule have spiritual, ancestral, cultural, customary and historical interests in the maunga.”

7. The Collective Deed Property Redress Schedule contains the table referred to in clause 2.3, and the iwi/hapū having spiritual, ancestral, cultural, customary and historical interests in the Maunga are as follows:

| | | |
|---|---|--|
| Te Pane o Mataoho / Te Ara Pueru / Māngere Mountain | Ngāi Tai ki Tāmaki Ngāti Maru Ngāti Tamaoho Ngāti Tamaterā Ngāti Te Ata | Ngāti Whātua Ōrākei Ngāti Whātua o Kaipara Te Ākitai Waiohūa Te Kawerau ā Maki Te Patukirikiri |
|---|---|--|

8. Any decision to determine management within a reserve must take into account the legislative and policy framework.
9. The Authority administers the Tūpuna Maunga under the Reserves Act 1977 and pursuant to Ngā Mana Whenua o Tāmaki Makaurau Collective Redress Act 2014. The Hauraki Gulf Marine Park Act 2000 is also relevant. The activities of the Playcentre are consistent with the reserve classification.
10. Section 109(2) of Ngā Mana Whenua o Tāmaki Makaurau Collective Redress Act 2014 requires the Authority to have regard to the spiritual, ancestral, cultural, customary, and historical significance of the Maunga to Ngā Mana Whenua o Tāmaki Makaurau and that the Tūpuna Maunga is held in trust for Ngā Mana Whenua and the other people of Auckland.
11. The Tūpuna Maunga Authority's Integrated Management Plan (IMP) was adopted by the Authority in terms of Ngā Mana Whenua o Tāmaki Makaurau Collective Redress Act 2014 and the Reserves Act 1977. The Integrated Management Plan describes a series of "Values" and "Pathways" that guide all activities on the Tūpuna Maunga. The primary focus of the IMP is to protect the health and well-being of the Tūpuna Maunga.
12. The Tūpuna Maunga Authority adopted the Tūpuna Maunga Strategies at Hui 50 on 25 September 2020. The Tūpuna Maunga Strategies are 7 key sections that outline the strategic direction with regards to education, Biodiversity, Tūpuna Maunga design, Recreation, commercial activities and monitoring. Together with the IMP, these strategies inform guide and manage the activities undertaken on the Maunga.
13. Section 61 of the Reserves Act 1977 sets out the Authority's powers in relation to leasing on a local purpose reserve. There have been no other parties who have expressed an interest in occupying the site.

Leases on Tūpuna Maunga

14. The Tūpuna Maunga o Tāmaki Makaurau Integrated Management Plan (IMP) describes a series of values and pathways that dictate decision-making on leases. The IMP places the health and well-being of the Tūpuna Maunga at the heart of all decisions.
15. Any leasing activity must be consistent with the IMP Tūpuna Maunga values and should actively promote those values. One step is a Maunga Outcomes Plan form part of all leases on Tūpuna Maunga.

Proposed Lease Area

16. The proposed lease area is shown in red below.



Lease area shown in red. Māngere War Memorial Hall to the right.

Terms

Term

17. The approach to leases on the Tūpuna Maunga to date has been to initially offer short-term leases to give lessees the opportunity to demonstrate their contribution to the wellbeing of the Maunga and the values set out in the IMP.
18. As part of the lease, the club will be required to provide an outcomes plan to demonstrate this contribution.
19. Management proposes an initial term of one year to allow time for the club to deliver on Maunga outcomes and for those to be reviewed.

Rental

20. A market rental valuation has been undertaken by an independent registered valuer. The estimated annual rental is \$4,800 + GST.

Next Steps

21. If a lease and license are to be offered, Management will work alongside the Playcentre to draft a Tūpuna Maunga Lease (including a Tūpuna Maunga Outcomes Plan) for consideration and execution by the Chair and Deputy Chair.

Policy for Weddings on Tūpuna Maunga

Author: Brooke Waterson, Kaiwhakahono Kaupapa

| | |
|------------------------|---|
| Purpose | To consider a weddings policy for the Tūpuna Maunga Authority. |
| Recommendations | That the Tūpuna Maunga Authority a. adopt the Weddings Policy for the Tūpuna Maunga (Attachment B). |

Background

1. Management have received requests from the public to hold private weddings on Tūpuna Maunga and propose a policy to regulate such ceremonies and to protect the health and well-being of the Maunga.
2. The policy would not cover wedding permits sought by Mana Whenua as approved cultural activities under Ngā Mana Whenua o Tāmaki Makaurau Collective Redress Act 2014.

Statutory and other considerations

3. This paper relates to Maungawhau / Mount Eden (Historic Reserve, Recreation Reserve), Maungakiekie / One Tree Hill (Recreation Reserve), and Maungauika / North Head (Historic Reserve).
4. Clause 2.3 of the Ngā Mana Whenua o Tāmaki Makaurau Collective Redress Deed 2012 states:
“2.3 The Tāmaki Makaurau collective legislation will, on the terms provided by section 43 of the draft bill, direct the Registrar-General to record on any computer freehold register for each maunga that the iwi and hapū of Ngā Mana Whenua o Tāmaki Makaurau specified for that maunga in table 1 of part 3 of the property redress schedule have spiritual, ancestral, cultural, customary and historical interests in the maunga.”
5. The Collective Deed Property Redress Schedule contains the table referred to in clause 2.3, and the iwi/hapū having spiritual, ancestral, cultural, customary and historical interests in the Maunga are as follows:

| | | |
|----------------------------|--|---|
| Maungawhau / Mount Eden | Ngāi Tai ki Tāmaki Ngāti Maru Ngāti Pāoa Ngāti Tamaoho Ngāti Tamaterā Ngāti Te Ata Ngāti Whanaunga | Ngāti Whātua Ōrākei Ngāti Whatua o Kaipara Te Ākitai Waiohua Te Kawerau ā Maki Te Patukirikiri Te Rūnanga o Ngāti Whātua |
|----------------------------|--|---|

| | | |
|---------------------------------|--|--|
| Maungakiekie / One Tree Hill | Ngāi Tai ki Tāmaki Ngāti Maru Ngāti Pāoa Ngāti Tamaoho Ngāti Tamaterā Ngāti Te Ata Ngāti Whanaunga | Ngāti Whātua Ōrākei Ngāti Whatua o Kaipara Te Ākitai Waiohua Te Kawerau ā Maki Te Patukirkiri Te Rūnanga o Ngāti Whātua |
| Maungauika / North Head | Ngāi Tai ki Tāmaki Ngāti Maru Ngāti Pāoa Ngāti Tamaoho Ngāti Tamaterā Ngāti Te Ata Ngāti Whanaunga | Ngāti Whātua Ōrākei Ngāti Whatua o Kaipara Te Ākitai Waiohua Te Kawerau ā Maki Te Patukirkiri Te Rūnanga o Ngāti Whātua |

6. Any decision to determine management within a reserve must take into account the legislative and policy framework.
7. The Authority administers the Tūpuna Maunga under the Reserves Act 1977 and pursuant to Ngā Mana Whenua o Tāmaki Makaurau Collective Redress Act 2014. The Hauraki Gulf Marine Park Act 2000 is also relevant.
8. Section 109(2) of Ngā Mana Whenua o Tāmaki Makaurau Collective Redress Act 2014 requires the Authority to have regard to the spiritual, ancestral, cultural, customary, and historical significance of the maunga to Ngā Mana Whenua o Tāmaki Makaurau and that the Tūpuna Maunga is held in trust for Ngā Mana Whenua and the other people of Auckland.
9. The Tūpuna Maunga Authority's Integrated Management Plan (IMP) was adopted by the Authority in terms of Ngā Mana Whenua o Tāmaki Makaurau Collective Redress Act 2014 and the Reserves Act 1977. The Integrated Management Plan describes a series of "Values" and "Pathways" that guide all activities on the Tūpuna Maunga. The primary focus of the IMP is to protect the health and well-being of the Tūpuna Maunga.
10. The Tūpuna Maunga Authority adopted the Tūpuna Maunga Strategies at Hui 50 on 25 September 2020. The Tūpuna Maunga Strategies are 7 key sections that outline the strategic direction with regards to education, Biodiversity, Tūpuna Maunga design, Recreation, commercial activities and monitoring. Together with the IMP, these strategies inform guide and manage the activities undertaken on the Maunga.
11. The Tūpuna Maunga are within the catchments that support the Hauraki Gulf. The purpose of the Hauraki Gulf Marine Park Act 2000, among other matters, is to "recognise the historic, traditional, cultural, and spiritual relationship of the tangata whenua with the Hauraki Gulf".
12. The following values set out in the Tūpuna Maunga Integrated Management Plan are of particular relevance.
 - a) Wairuatanga / Spiritual. Relevant pathways for aligning to this value include: 1. Tread gently, and 2. Treat the Maunga as taonga tuku iho – treasures handed down the generations.
 - b) Takotoranga Whenua / Landscape. Relevant pathways for aligning to this value include: 1. Protecting the integrity of the landscape of the Tūpuna Maunga, and 2. Preserve the visual and physical integrity of the Maunga as landmarks of Tāmaki.

- c) Whai Rawa Whakauka / Economic / Commercial. Relevant pathways for aligning to this value include: 1. Explore alternative and self-sustaining funding opportunities.

Parameters

- 13. Considerations for where appropriate sites for weddings would be on the Maunga include: aesthetics, view, facilities, and accessibility. Management propose limiting weddings on Tūpuna Maunga to six sites across three Maunga as follows (see Attachment A):
 - a. Three wedding sites are proposed for Maungauika.
 - b. Two wedding sites are proposed for Maungawhau.
 - c. One wedding site is proposed for Maungakiekie/ One Tree Hill.
- 14. Management note that the policy applies to wedding ceremonies only and does not apply to wedding party photographs.

Attachments

Attachment A: Proposed wedding locations

Attachment B: Proposed Wedding Policy

Attachment A:

Proposed wedding locations at Maungauika:

1. Maungauika Wedding site 1



2. Maungauika Wedding site 2



3. Maungauika Wedding site 3



Proposed wedding locations at Maungawhau:

1. Maungawhau wedding site 1



2. Tahaki Reserve (Maungawhau wedding site 2)



Proposed wedding location at Maungakiekie:

1. Maungakiekie Wedding site 1)





TŪPUNA MAUNGA WEDDINGS POLICY

Policy

1. The Tūpuna Maunga Authority has adopted a policy that
 - a. All weddings to be held on Tūpuna Maunga require a permit from the Tūpuna Maunga Authority
 - b. All weddings on Tūpuna Maunga must be held in one of six designated locations on three Tūpuna Maunga (see Attachment A).
2. The policy does not effect any wedding held as an “Authorised Cultural Activity” pursuant to Ngā Mana Whenua o Tāmaki Makaurau Collective Redress Act 2014.

Background

3. The Ngā Mana Whenua o Tāmaki Makaurau Collective Redress Act 2014 legislated the transfer of ownership of 14 Tūpuna Maunga to Ngā Mana Whenua o Tāmaki Makaurau (the 13 hapū/iwi of Tāmaki Makaurau).
4. The Act establishes and appoints the Maunga Authority as the administering body for the Tūpuna Maunga under the Reserves Act 1977. In exercising its powers and carrying out its functions, the Maunga Authority must have regard to the spiritual, ancestral, cultural, customary, and historical significance of the Tūpuna Maunga to Ngā Mana Whenua o Tāmaki Makaurau.
5. The Tūpuna Maunga Authority is made up of 6 Mana Whenua representatives, 6 Auckland Council representatives and 1 non-voting Crown member. As the administering body, the Tūpuna Maunga Authority is responsible for decision-making and the governance of the Tūpuna Maunga and can implement its own policies concerning memorials and plaques on the Maunga.
6. The Policy applies to the Tūpuna Maunga being:
 - Te Ara Pueru/Te Pane-o-Mataaho/Mangere Mountain
 - Matukutūruru/Wiri Mountain
 - Maungakiekie/One Tree Hill
 - Maungarei/Mount Wellington
 - Maungawhau/Mount Eden
 - Maungauika/North Head
 - Ōwairaka/Te Ahi-kā-a-Rakataura/ Mount Albert
 - Ōhinerau/Mount Hobson
 - Ōhūiarangi/Pigeon Mountain
 - Ōtāhuhu/Mount Richmond



- Pukewīwī/Puketāpapa/Mount Roskill
- Te Kōpuke/Tītīkōpuke/Mount St John
- Takarunga/Mount Victoria
- Te Tātua a Riukiuta/Big King.

Rationale

7. The purpose of the policy is to protect the sanctity of the Tūpuna Maunga by stopping unrestricted ceremonial use and to develop a long-term income stream to support the health and well-being of the Maunga.
8. The Authority administers the Tūpuna Maunga under the Reserves Act 1977 and pursuant to Ngā Mana Whenua o Tāmaki Makaurau Collective Redress Act 2014. The Hauraki Gulf Marine Park Act 2000 is also relevant.
9. Section 109(2) of Ngā Mana Whenua o Tāmaki Makaurau Collective Redress Act 2014 requires the Authority to have regard to the spiritual, ancestral, cultural, customary, and historical significance of the Maunga to Ngā Mana Whenua o Tāmaki Makaurau and that the Tūpuna Maunga is held in trust for Ngā Mana Whenua and the other people of Auckland.
10. The Tūpuna Maunga Authority's Integrated Management Plan (IMP) was adopted by the Authority in terms of Ngā Mana Whenua o Tāmaki Makaurau Collective Redress Act 2014 and the Reserves Act 1977. The Integrated Management Plan describes a series of "Values" and "Pathways" that guide all activities on the Tūpuna Maunga. The primary focus of the IMP is to protect the health and well-being of the Tūpuna Maunga. The "protection and enhancement of the mauri and wairua of the Tūpuna Maunga is paramount" (p57).
11. The policy is designed to align with the following Maunga values:
 - a) Wairuatanga / Spiritual. Relevant pathways for aligning to this value include: 1. Treat gently, and 2. Treat the Maunga as taonga tuku iho – treasures handed down the generations.
 - b) Takotoranga Whenua / Landscape. Relevant pathways for aligning to this value include: 1. Protecting the integrity of the landscape of the Tūpuna Maunga, and 2. Preserve the visual and physical integrity of the Maunga as landmarks of Tāmaki.
 - c) Whai Rawa Whakauka / Economic / Commercial. Relevant pathways for aligning to this value include: 1. Explore alternative and self-sustaining funding opportunities.



Implementation

12. Management will regulate booking arrangements to ensure the 6 sites are well managed and do not conflict with other weddings or events.
13. Permits may be refused at the discretion of management and may include any conditions necessary to protect the health and well-being of the Maunga.
14. Management will apply the fees as per the Fees Schedule previously adopted by the Tūpuna Maunga Authority.

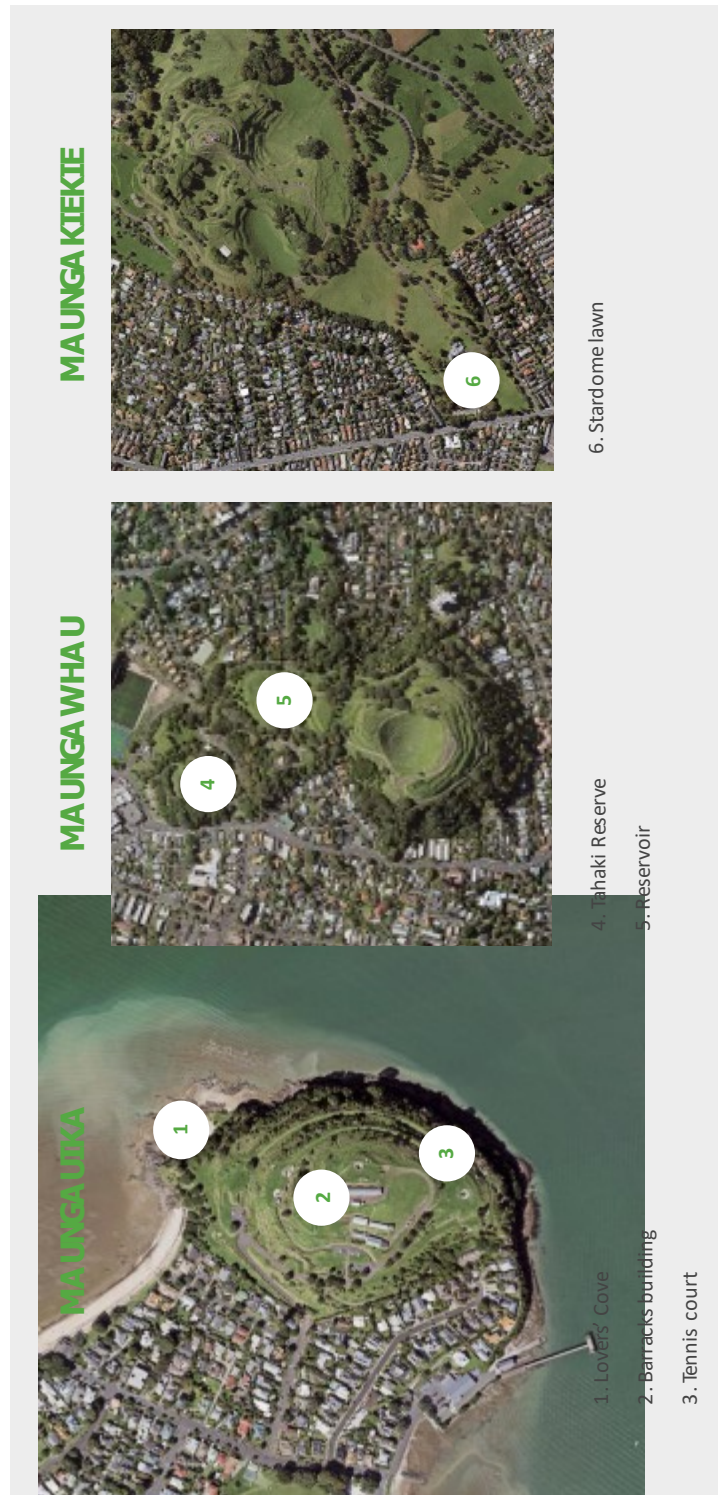
Definitions

15. In this policy “Weddings” means one-off marriage ceremonies and events held by private parties (couples getting married) and does not include commercial wedding planners or businesses conducting or managing weddings.



Attachment A: Ngā Wāhi / Locations

Ngā Wāhi / The Locations



*Please make all enquiries for Sorrento in the Park (Maungakiekie) direct to Sorrento

*Please make all enquiries for Cornwall Park directed to the Cornwall Park Trust



Registers

Authors: Nick Turoa; Tūpuna Maunga Authority

| | |
|------------------------|---|
| Purpose | To provide the Tūpuna Maunga Authority with updated registers for: <ul style="list-style-type: none">a. Health & Safety (Attachment A)b. Events (Attachment B) |
| Recommendations | That the Tūpuna Maunga Authority <ul style="list-style-type: none">a. note the attached Registers, which have been updated since Hui 64 (31 May 2021). |

Registers

Attachment A - Health & Safety Register.

Attachment B - Events Register.

Attachment A: Health and Safety Register

| Hui reported to | Maunga | Summary of incident | Number of any near misses | Outcome of investigations into any incidents and near misses | Health and Safety management matters arising | Actions Taken |
|-----------------|----------------------|--|---------------------------|--|---|---|
| Hui 66 | Ōtāhuhu | Multiple incidents of quads and motorbikes driving on the sportsfield damaging the grass | | | | <p>The police have been notified of the incidents.</p> <p>Quad bikes are entering the site from various entry points including where capital works are being undertaken and pedestrian access ways. Management are investigating fencing options for the field.</p> |
| Hui 66 | Te Tātua a Riukiuta | Motorbike driving through the entrance of duke street and damaging turf, witnessed on two occasions in the morning. | | | | <p>The police have been notified of the incident. An arrest has recently been made of the person responsible. Management are awaiting further information from the police.</p> |
| Hui 66 | Ōhuairangi | Sportsfield and slopes damaged by motorcycles driving onto the Maunga. | | | | <p>The police have been notified of the incident. Management are considering fencing options for the reserve and CCTV coverage.</p> |
| Hui 66 | Puketāpapa/ Pukewīwī | Contractor cut on Phoenix palm frond while putting rubbish on his truck | | Contractor was hospitalised due to infection and not seeking medical attention right away | | <p>The Contractors have updated their SOP about working around Phoenix Palms.</p> <p>Workers have been reminded of their responsibilities to report health and safety incidents and seek medical attention at appropriate times.</p> |
| Hui 66 | Ōwairaka | Toilets vandalised by ripping out the flushing mechanism and pipes. | | | | <p>The police have been notified of this incident</p> |
| Hui 66 | Māngere | Oil spill reported at Mangere in the soccer club carpark running out of the track contractors site office area. | | Contractor advised some spillage occurred when re-fueling their machinery. They have changed this process so that there is absorbent matting on the ground when this occurs. | | <p>Additional filter put around stormwater drain nearby and absorbent matting placed in spill area.</p> |
| Hui 66 | Maungakiekie | Oil spill reported on road area in the stardome carpark area. Potentially caused by vehicle that had driven through the area leaving a trail of oil earlier in the morning or overnight. | | Area of spill was spreading out through carpark and onto Manukau Rd but contained by contractors. | Vehicles restricted from area until spill was cleaned up. | <p>Area of spill cleaned up with absorbent product.</p> |

| Hui reported to | Maunga | Summary of incident | Number of any near misses | Outcome of investigations into any incidents and near misses | Health and Safety management matters arising | Actions Taken |
|-----------------|------------------------------|---|---------------------------|---|--|---|
| Hui 66 | Maungakiekie | During weed eating stones have flicked up and damaged two car windows, one public vehicle and one contractor vehicle. | | | | |
| Hui 64 | Maungawhau | One of the planks on the boardwalk had a crack in it that has needed repairing | | | Potential to for plank to fail and injure a pedestrian | Plank spray-painted to indicate not to walk on Contractors attended and reapiired plank sufficient to walk over, but need to return to put proper plank back. |
| Hui 64 | Ōwairaka, Te Tātua, Ōhinerau | Mowing contractors are routinely seeing dog owners not picking up after their dogs. This has led to them being covered in dog faeces during the mowing of these areas. Some areas have been sectioned off as they contain too much dog faeces to mow. | | | Contractors being covered in dog faeces | Problem areas sectioned off. Management considering locations of additional or new signage Management will be working with the contractor on a public awareness campaign to let people know the serious nature of the issue. A letter has been sent to dog walking companies to ensure they are picking up after themselves. |
| Hui 62 | Maungawhau | Pedestrian slipped on the painted surfaces on the road to the tihi. | | | | We have checked in with the contractor and confirmed that appropriate road grade paint was used alongside a non-slip surface application. Information about the incident came through the Auckland Council Reporting system but did not include the weather conditions or the types of shoes the person was wearing. Unfortunately contact details were not left either. |
| Hui 62 | Puketāpapa | Multiple cars in lower carpark drinking in the mornings of weekends when contractors arrive to unlock | | Contractors have said this is a regular occurrence early Saturday and Sunday mornings when they arrive to unlock. | | Contractors to document when they see cars and bottles thrown around the maunga. Report lodged through police website of incident. Management have contacted local police station to investigate. |
| Hui 62 | Māngere | Person has slipped on loop track, required air lift off the maunga to ambulance. | | | | Unfortunately this was not reported to staff immediately and it was not until well after the incident that we found out about this incident. The Authority have approved a track upgrade that will mitigate these types of hazards. Management are awaiting a |

| Hui reported to | Maunga | Summary of incident | Number of any near misses | Outcome of investigations into any incidents and near misses | Health and Safety management matters arising | Actions Taken |
|-----------------|--------------|---|---------------------------|---|--|---|
| | | | | | | resource consent to begin works on the track. A memo has been sent to the resource consenting team advising them of the incident and the importance of the track upgrades. |
| Hui 61 | Maungauika | A person was hit by a falling rock dislodged by child clambering up bank during cup racing days. | | The incident was thoroughly investigated by an Auckland Council Health and Safety officer. The investigation found that extensive planning had been put in place to manage large crowds on race days. The investigation found that the follow up actions were appropriate. | | Staff stationed on Maungauika during racing attended the incident immediately alongside a police officer and a member of the public (who was a doctor) our staff member stayed with the person until an ambulance arrived. As a result extra signage was put up to prevent people to warn people about climbing on cliffs, extra security staff were put on duty during race days and more cliff areas cordoned off. |
| Hui 61 | Maungakiekie | Young girl was playing on the pipehenge structure outside Stardome and scratched herself on a sharp piece of metal sticking out. | | Pipehenge is a Stardome asset, they are responsible for the future of structure. | Sharp object with potential to scratch anyone playing on structure | Playground sectioned off Stardome have removed the structure |
| Hui 61 | Ōwairaka | On 21 January 2021, while mowing Ōwairaka contractors noted that the dog faeces were worst they have ever been, and mower operators got covered in dog faeces | | Contractors noted that multiple doggy day care vans use Ōwairaka as a exercise area and don't pick up after the dogs in their care | Unsanitary work environment for contractors on the Maunga | TMA committing summer field officers to Ōwairaka for at least two hours for two days a week. Signage indicating dog owners pick up after their dogs erected at car park |
| Hui 60 | Maungauika | On 7 November 2020 a Mountain biker going off road fell off and dislocated shoulder | | The injury was the result of an unlawful activity. Signage is in place on the Maunga (including directly beneath where the person fell off) Management were on site and assisted with the first aid given to the person and waited with them until an ambulance arrived | | |
| Hui 60 | Maungarei | On 6 November 2020, a group of youths attempted to get onto the Maunga to light | | | | The incident was reported to the Police who are currently investigating. |

| Hui reported to | Maunga | Summary of incident | Number of any near misses | Outcome of investigations into any incidents and near misses | Health and Safety management matters arising | Actions Taken |
|-----------------|-------------------|--|---------------------------|--|--|--|
| | | fireworks. When they were asked to leave they tried to assault the guards on duty. Whilst running away, the security guard observed a can of petrol in one of the people's hands | | | | An extra guard was put on the Maunga the following night and there will be night patrols on Maungarei over the next weekend. |
| Hui 60 | Takarunga | On 5 November 2020, fireworks were thrown at guards on duty standing at the gate of Takarunga | | | | While the security guard were unable to get registration details, the incident was reported to the Police. |
| Hui 60 | Ohuiarangi | Several motorbikes driving up and down the terracing at Ōhuiārangi | | Contractor reported that they are using mainly the track through the bush that was previously dug out for illegal mountain bike tracks | | Temporary fencing has been put in between the trees to block access down from the tihi through this area. Bike signage still up and will be checked regularly The Team is investigating the possibility of barriers to prevent motor bikes. |
| Hui 58 | Maungarei | Fire started on adjoining land to Maungarei Maunga from fireworks. | 1 | The fire was started as a result of fireworks set off by a group of youths. Apologies have been received by two of the youths and also an email report from the detective who investigated the matter. It is understood that group reported the incident directly to FENZ. | | Tūpuna Maunga Staff attended the fire on the night and confirmed that the fire was not on the legal boundary of the Tūpuna Maunga. All firebreaks have been reviewed on Maungarei and extra precautions have been put in place during the closure of the Maunga during the Guy Fawkes Period. |
| Hui 58 | Owairaka | A dog that was not under control attacked a member of the Mowing Team | | | | Tūpuna Maunga staff ensuring dog bylaw signage still intact. Animal management contacted for assistance in managing uncontrolled dogs off leash |
| Hui 58 | Maungawhau | Motorbike going down Maungawhau | | Contractors were unable to get license plate for bike owner, have recommended additional speed humps or some other form of deterrent for bikes that come down the summit road | | Tūpuna Maunga staff investigating options at slowing traffic down this side, already speed humps there currently though |
| Hui 57 | Maungauika tunnel | Management have recently had a site visit to the tunnels with Geotech engineers who have advised that further assessments should be made of two areas; the tunnel leading to the coastal | | | | Management have sought a report from Geotech engineers and engineers about the safety of these two assets. |

| Hui reported to | Maunga | Summary of incident | Number of any near misses | Outcome of investigations into any incidents and near misses | Health and Safety management matters arising | Actions Taken |
|-----------------|--|---|---------------------------|--|--|--|
| | | walkway and the “cave” next to the southern battery. | | | | |
| Hui 57 | Maungauika/ North Head | On 27 July contractors advised us of a large new slip on the Maungauika/ North Head Coastal Track | | | This track has now been closed for over a year due to a slip in 2019. Management have previously scaled the wall of all loose rock and vegetation and been working with Geotech engineers and Geologist at the site for over a year now. | The Track remains closed. Extra signage and barriers have been put in place. Management have engaged Geotech engineers and geologist to re-assess the site. |
| Hui 56 | Ōwairaka/ Te Ahi-Kā-a-Rakataura / Mt Albert | Feedback from public that the the La Veta entranceway track on Owairaka is slippery and that people have been slipping on the track | | | Peripheral tracks on Owairaka require upgrading. Management are investigating potential options. People have been pulling down the barriers and ripping off signage. Incidents have been reported to police. Barriers replaced with a “track closed” sign | The track has been closed until dry enough to reopen. |
| Hui 56 | Ōwairaka/ Te Ahi-Kā-a-Rakataura / Mt Albert | Member of public slipped on the road on a patch of lichen breaking their arm | | | Management are reviewing the road surface and investigating potential upgrades. | Management have made contact with the member of the public and advised of actions taken to remedy the situation. The lichen has been waterblasted using a non-potable water source. |
| Hui 55 | Ōwairaka / Te Ahi-Kā-a-Rakataura / Mt Albert | Member of the public has allegedly been attacked by another member of the public on 6 June 2020. | | | | CCTV footage for the day has been forwarded to the police as part of their investigation. Management continue to assist Police with their investigation where possible |
| Hui 54 | Maungawhau/ Mt Eden | Large party held on the tihi of the maunga on the night of Friday 15 May 2020. Excessive smashed glass discovered in the morning over the tihi summit carpark | | | | Incident reported to the police (incident number: OR-52891N) Glass Cleaned up and extra patrols organised for Saturday Night. |
| Hui 54 | Ōwairaka/ Te Ahi-Kā-a-Rakataura / Mt Albert | 2 Wasp nests discovered by biosecurity contractors. One near Archery Club, one near the summit road | | | | Wasps nest treated with insecticide.. |
| Hui 53 | Ōwairaka / Te Ahi-kā-a-Rakataura / Mt Albert | Reports received from members of the public that the protest group were undertaking surveillance of the campsite in breach of the COVID 19 level 4 lockdown rules. Further reports were | | | | Officers removed the tents, marquees and the several truckloads of other camping equipment in accordance with the Reserves Act. |

| Hui reported to | Maunga | Summary of incident | Number of any near misses | Outcome of investigations into any incidents and near misses | Health and Safety management matters arising | Actions Taken |
|-----------------|-----------|---|---------------------------|---|--|--|
| | | received that there were people congregating in and around the campsite in breach of the lockdown rules. Reports received from public and confirmed by contractors that tents from the camp had been moved around and new protest signs erected at the camp in breach of the COVID 19 lockdown rules. | | | | They will be returned to the owners when the COVID 19 alert levels allow. |
| Hui 53 | Maungarei | <p>A grass fire was caused by fireworks.</p> <p>Incident number: F2983259.</p> <p>At approximately 1830 FENZ received reports that there were people letting off fireworks on and around the maunga. An appliance was sent to site but no fire was spotted. At 1923 the fire was reported and further appliances dispatched. an area of 60m by 30m was damaged as a result of the fire.</p> | | FENZ have provided reports that the cause of the fire was fireworks – the initial call identified people with fireworks on the Maunga and the Incident Controller on the site at the time was of the opinion that fireworks were the cause. | | <p>A Tūpuna Maunga Officer was dispatched to site to provide information and support to FENZ.</p> <p>Tūpuna Maunga Authority issued a media release which called for the ban for the sales of Fireworks.</p> |

Attachment B: Events Register

| Hui reported to | Maunga | Applicant | Event Description | Event date | Status | Revenue |
|-----------------|------------------------------------|--|-------------------|--|----------|--------------|
| Hui 65 | Maungawhau | Ficino School cross country | Community | 20 August 2021 | Approved | No Charge |
| Hui 65 | Maungarei | Tamaki Regeneration Matariki dawn hīkoi | Community | 2 July 2021 | Approved | No Charge |
| Hui 65 | Maungauika | Nature Baby photoshoot | Commercial | 2 July 2021 and 22 July 2021 | Approved | \$600 ex gst |
| Hui 65 | Maungawhau | Silo Theatre audio play launch event | Community | 2 July 2021 | Approved | \$190 ex gst |
| Hui 65 | Puketāpapa | Puketāpapa Manu Aute Kite Day | Community | 26 June 2021 | Approved | No Charge |
| Hui 65 | Ōwairaka | Ōwairaka School Matariki dawn hīkoi | Community | 25 June 2021 | Approved | No Charge |
| Hui 65 | Ōwairaka | Emerge Aotearoa Matariki dawn hīkoi | Community | 25 June 2021 | Approved | No Charge |
| Hui 65 | Te Pane-o-Mataoho/Māngere Mountain | Māngere Education Centre dawn Matariki hīkoi | Community | 19 June 2021 | Approved | No Charge |
| Hui 63 | Maungawhau/Mt Eden | Epsom Girls Grammar hīkoi | Community | 25 June 2021 | Approved | No Charge |
| Hui 63 | Ōtāhuhu | Auckland Ruby League game and livestream | Community | 19 June 2021 | Approved | No Charge |
| Hui 63 | Maungawhau | Students filming for University of Auckland assignment | Community | 4 June 2021 | Approved | No Charge |
| Hui 63 | Maungawhau | Conservation Volunteers New Zealand volunteer appreciation event | Community | 8 May 2021 | Approved | No Charge |
| Hui 63 | Maungakiekie | 5 th birthday picnic | Community | 8 May 2021 | Approved | No Charge |
| Hui 63 | Maungakiekie | Elopement/Wedding | Private | 8 May 2021 | Approved | \$450 ex GST |
| Hui 63 | Maungawhau/Mt Eden | Morris Dancers | Community | 1 May 2021 | Approved | No Charge |

| Hui reported to | Maunga | Applicant | Event Description | Event date | Status | Revenue |
|-----------------|------------------------------------|--|-------------------|---------------------------|-----------|-----------|
| Hui 63 | Maungawhau/Mt Eden | Diocesan School for Girls hīkoi | Community | 17 April 2021 | Approved | No Charge |
| Hui 63 | Te Pane-o-Mataoho/Māngere Mountain | Police cultural competency hīkoi | Community | 16 April 2021 | Approved | No Charge |
| Hui 63 | Te Pane-o-Mataoho/Māngere Mountain | Kī o Rahi Tāmaki Makaurau school tournament | Community | 13 April 2021 | Approved | No Charge |
| Hui 63 | Ōwairaka/Mt Albert | Mount Albert Presbyterian Church Easter Sunday Dawn Services | Community | 4 April 2021 | Approved | No Charge |
| Hui 63 | Takarunga/Mt Victoria | Combined Churches of Devonport Procession of Witness | Community | 2 April 2021 | Approved | No Charge |
| Hui 63 | Maungarei/Mt Wellington | Point England School teachers only day hīkoi | Community | 1 April 2021 | Approved | No Charge |
| Hui 63 | Maungakiekie/One Tree Hill | Western Springs College Year 9 history trip | Community | 31 March 2021 | Approved | No Charge |
| Hui 63 | Maungarei/Mt Wellington | Tamaki Regeneration Company hīkoi | Community | 27 March 2021 | Approved | No Charge |
| Hui 63 | Maungarei/Mt Wellington | Tamaki Regeneration Company hīkoi | Community | 25 March 2021 | Approved | No Charge |
| Hui 63 | Maungakiekie/One Tree Hill | Meadowbank School Year 5 Leadership Day | Community | 25 March 2021 | Approved | No Charge |
| Hui 62 | Maungakiekie / One Tree Hill | Fire and Emergency Family BBQ | Community | 21 March 2021 | Cancelled | Free |
| Hui 62 | Takarunga / MT Victoria | Imagination TV – filming for company promotion | Commercial | 10 March 2021 | Approved | \$450 |
| Hui 61 | Maungawhau / MT Eden | Auckland Pride Board – Karakia to start Pride Festival | Community | 3 February 2021 | Approved | Free |
| Hui 61 | Maungawhau / Mt Eden | Greenstone TV Ltd – filming for television show | Commercial | 20 January 2021 | Approved | \$1800 |
| Hui 60 | Maungawhau/ Mt Eden | Universal Music New Zealand Ltd – music video | Commercial | Thursday 17 December 2020 | Approved | \$450 |
| Hui 60 | Maungakiekie/ Mt Eden | Power Rangers Productions – filming for television show | Commercial | 12 November 2020 | Approved | \$1800 |

| Hui reported to | Maunga | Applicant | Event Description | Event date | Status | Revenue |
|-----------------|---------------------------------------|--|-------------------|---|-----------|-----------|
| Hui 59 | Ōhūiarangi | Blue Light ventures – young people obstacle course competition | Community | Friday 23 September | Approved | No Charge |
| Hui 59 | Maungawhau /MT Eden Tahaki Reserve | Ficino School – Cross Country | Community | Wednesday 9 September 2020 | Approved | No Charge |
| Hui 59 | Maungauika/ North Head | Devonport Marathon | Commercial | Saturday 10 October | Approved | \$1200 |
| Hui 57 | Ōtahuhu/ Mt Richmond | Auckland Rugby League Club (live stream filming) | Community | Saturday 1 August | Approved | \$380 |
| Hui 56 | Pukewīwī / Puketāpapa / Mt Roskill | Puketāpapa Local Board – Manu Aute / Matārīki celebration | Community | Sunday 28 June Sunday 5 July Sunday 12 July | Approved | No Charge |
| Hui 56 | Maungawhau/ MT Eden | Epsom Girls Grammar – Matārīki Karakia | Community | 26 June | Approved | No Charge |
| Hui 55 | Maungarei/ Mt Wellington | Dawn Raid Entertainment | Filming | 10 June 2020 | Approved | \$380 |
| Hui 55 | Te Pane a Mataoho/ Mangere Mountain | Dawn Raid Entertainment | Filming | 8 June 2020 | Approved | \$380 |
| Hui 54 | No Events | Hui 54 | No Events | Hui 54 | No Events | Hui 54 |