



---

**Date:** Monday, 12 September 2022  
**Time:** 3.00pm  
**Venue:** Online via Zoom

---

## **TŪPUNA MAUNGA O TĀMAKI MAKĀURAU AUTHORITY**

### **HUI 79 – 12 September 2022**

### **Open Agenda**

---

<b>Chairperson</b>	Mr Paul Majurey	Chairperson
<b>Deputy Chairperson</b>	Cr Alf Filipaina	Deputy Chairperson
<b>Members</b>	Cr Josephine Bartley	Auckland Council (Governing Body)
	Cr Dr Cathy Casey	Auckland Council (Governing Body)
	Toni Van Tonder	Auckland Council (Devonport-Takapuna Local Board)
	Chris Makoare	Auckland Council (Maungakiekie-Tāmaki Local Board)
	Hauāuru Rawiri	Ngā Mana Whenua o Tāmaki Makaurau (Marutūāhu Rōpū)
	Bernadette Papa	Ngā Mana Whenua o Tāmaki Makaurau (Ngāti Whātua Rōpū)
	Clay Hawke	Ngā Mana Whenua o Tāmaki Makaurau (Ngāti Whātua Rōpū)
	Zaelene Maxwell-Butler	Ngā Mana Whenua o Tāmaki Makaurau (Waiohūa-Tāmaki Rōpū)
	Dennis Kirkwood	Ngā Mana Whenua o Tāmaki Makaurau (Waiohūa-Tāmaki Rōpū)
<i>(Quorum is 7 members, comprising the chair or deputy chair and 2 members appointed by the rōpū entities and 2 members appointed by Auckland Council)</i>		

#### **ITEM TABLE OF CONTENTS**

1	Apologies	
2	Declaration of Interest	
3	Confirmation of Minutes	
4	Tūpuna Maunga Authority Term Highlights	13
5	Tūpuna Maunga planting update	23
6	Secondary tracks upgrade	27
7	Draft Individual Tūpuna Maunga Plans	39
8	Summer Delegations 2022/23	85
9	Research Scholarship	89
10	Takarunga Playcentre lease	93
11	Registers	99
	A Health and Safety Register	
	B Events Register	



*Ngā Mana Whenua o Tāmaki Makaurau Collective Redress Act 2014*

*109 Functions and powers*

- (1) The Maunga Authority has the powers and functions conferred on it by or under this Act or any other enactment.
- (2) In exercising its powers and carrying out its functions in relation to the maunga, the Maunga Authority must have regard to—
  - (a) the spiritual, ancestral, cultural, customary, and historical significance of the maunga to Ngā Mana Whenua o Tāmaki Makaurau; and
  - (b) section 41(2).
- (3) In exercising its powers and carrying out its functions in relation to the administered lands, the Maunga Authority must have regard to the spiritual, ancestral, cultural, customary, and historical significance of the administered lands to Ngā Mana Whenua o Tāmaki Makaurau.

[Emphasis added]

*41 Maunga must remain as reserves vested in trustee*

- (1) This section applies to each maunga once the maunga is—
  - (a) vested in the trustee under subpart 1, 2, or 3 of this Part;and
  - (b) Declared a reserve under any of sections 18 to 29, 33, and 39.
- (2) The maunga is held by the trustee for the common benefit of Ngā Mana Whenua o Tāmaki Makaurau and the other people of Auckland.

...

[Emphasis added]





## Tūpuna Maunga Reserve Status\*

The following Tūpuna Maunga, with the relevant reserve status, are classified as reserves subject to the Reserves Act 1977

Maunga	Reserve Status
Matukutūruru	Historic reserve
Maungakiekie / One Tree Hill	Recreation reserve
Maungarei / Mt Wellington	Recreation reserve, Local Purpose reserve
Maungawhau / Mount Eden	Historic reserve, Recreation reserve
Maungauika / North Head	Historic reserve
Ōwairaka / Te Ahi-kā-a-Rakataura / Mount Albert	Recreation reserve
Pukewīwī / Puketāpapa / Mount Roskill	Recreation reserve
Te Kōpuke / Tītīkōpuke / Mount St John	Recreation reserve
Ōhinerau / Mount Hobson	Recreation reserve
Ōhūiarangi / Pigeon Mountain	Historic reserve, Recreation reserve, Local Purpose reserve
Ōtāhuhu / Mount Richmond	Recreation reserve
Takarunga / Mount Victoria	Recreation reserve, Local Purpose reserve
Te Tātua-a-Riukiuta / Big King	Recreation reserve
Te Ara Pueru / Te Pane-o-Mataaho / Mangere Mountain	Historic reserve, Recreation reserve, Local Purpose reserve
Rarotonga / Mount Smart	Recreation reserve

\* See sections 18-29, 33 (repealed), 39, 41, 47, 53, 54, and Schedules 1 & 2, 6 of Ngā Mana Whenua o Tāmaki Makaurau Collective Redress Act 2014





Date: Monday, 15 August 2022  
Time: 3.31pm  
Venue: Online via Zoom

---

## TŪPUNA MAUNGA O TĀMAKI MAKĀURAU AUTHORITY HUI 78 – 15 August 2022 Open Minutes

---

---

<b>Chairperson</b>	Mr Paul Majurey	Chairperson
<b>Deputy Chairperson</b>	Cr Alf Filipaina	Deputy Chairperson
<b>Members</b>	Cr Josephine Bartley	Auckland Council (Governing Body)
	Cr Dr Cathy Casey	Auckland Council (Governing Body)
	Toni Van Tonder	Auckland Council (Devonport-Takapuna Local Board)
	Chris Makoare	Auckland Council (Maungakiekie-Tāmaki Local Board)
	Clay Hawke	Ngā Mana Whenua o Tāmaki Makaurau (Ngāti Whātua Rōpū)
	Zaelene Maxwell-Butler	Ngā Mana Whenua o Tāmaki Makaurau (Waiohūa-Tāmaki Rōpū)
	Dennis Kirkwood	Ngā Mana Whenua o Tāmaki Makaurau (Waiohūa-Tāmaki Rōpū)

### APOLOGIES

Bernadette Papa	Ngā Mana Whenua o Tāmaki Makaurau (Ngāti Whātua Rōpū)
Hauāuru Rawiri	Ngā Mana Whenua o Tāmaki Makaurau (Marutūāhu Rōpū)

Member Dennis Kirkwood opened the hui.

**1 Apologies**

MOVED by Member P Majurey, seconded by Member Maxwell-Butler:

**That the Tūpuna Maunga Authority:**

- a) accept the apology from Bernadette Papa and Hauāuru Rawiri for absence.

**CARRIED**

**2 Declaration of Interest**

MOVED by Member P Majurey, seconded by Member Maxwell-Butler:

**That the Tūpuna Maunga Authority:**

- a) note there were no declarations of interest.

**CARRIED**

**3 Confirmation of Minutes**

MOVED by Member P Majurey, seconded by Member Maxwell-Butler:

**That the Tūpuna Maunga Authority:**

- a) confirm the minutes of Hui 77 held on Monday, 25 July 2022, as a true and accurate record.

**CARRIED**

**4 Tūpuna Maunga Authority: Quarter 4 Report**

MOVED by Member P Majurey, seconded by Member T van Tonder:

**That the Tūpuna Maunga Authority:**

- a) note the attached 4th Quarter Report for the 2021/22 financial year.

**CARRIED**

**5 Maunga wayfinding signage**

MOVED by Member P Majurey, seconded by Member D Kirkwood:

**That the Tūpuna Maunga Authority:**

- a) approve proceeding with the proposed wayfinding signage as described in the report, and presented in Attachment A.

**CARRIED**

**6 Māngere Bridge Playcentre Lease update**

MOVED by Cr A Filipaina, seconded by Member P Majurey:

**That the Tūpuna Maunga Authority:**

- a) delegates to the Chair and Deputy Chair the power to execute a lease, including a Maunga Outcomes Plan, with the Māngere Bridge Playcentre at a market rental (as determined by a registered valuer) and otherwise on the standard terms and conditions; and
- b) delegates to the Chair and Deputy Chair the power to agree to terms governing the termination arrangements of the Māngere Bridge Playcentre should the Playcentre decide not to accept the new lease.

**CARRIED**

**7 Ōtāhuhu Bowling Greens Conversion**

MOVED by Member P Majurey, seconded by Member C Makoare:

**That the Tūpuna Maunga Authority:**

- a) approves proceeding with the proposed practice field at Ōtāhuhu / Mt Richmond as set out in the report.

**CARRIED**

**8 Registers**

MOVED by Member P Majurey, seconded by Cr J Bartley:

**That the Tūpuna Maunga Authority:**

- a) note the attached Registers, which have been updated since Hui 75 (23 May 2022).

**CARRIED**

Member Dennis Kirkwood closed Hui 78.

2.44pm

The Chairperson thanked members for their attendance and attention to business and declared the meeting closed.

CONFIRMED AS A TRUE AND CORRECT RECORD AT A  
MEETING OF THE TŪPUNA MAUNGA O TĀMAKI  
MAKAURAU AUTHORITY HELD ON

**DATE:**.....

**CHAIRPERSON:**.....



## Open Agenda

### 1 Apologies

No apologies had been received at the close of the agenda.

### 2 Declaration of Interest

Members are reminded of the need to be vigilant to stand aside from decision making when a conflict arises between their role as a member and any private or other external interest they might have.

### 3 Confirmation of Minutes

- a) **confirm** the minutes of Hui 78 held on Monday, 15 August 2022, as a true and accurate record.



## Tūpuna Maunga Authority Term Highlights

Authors: Mairi MacKay, Advisor - Co-Governance and Leigh Collecutt, Kaiwhakahaere  
Tupuna Maunga

<b>Purpose</b>	To review and celebrate the achievements of the Tūpuna Maunga Authority over the 2019-2022 term.
<b>Recommendations</b>	That the Tūpuna Maunga Authority:  a) <b>note</b> the highlights over the 2019-2022 term of the Tūpuna Maunga Authority.

## Background

1. With Hui 79 being the final hui before the end of the term, Management review some of the Authority's projects and activities over the last three years.

## Statutory and other considerations

2. All decisions of the Authority must take into account the legislative and policy framework.
3. Section 109(2) of Ngā Mana Whenua o Tāmaki Makaurau Collective Redress Act 2014 requires the Authority to have regard to the spiritual, ancestral, cultural, customary, and historical significance of the Maunga to Ngā Mana Whenua o Tāmaki Makaurau and that the Tūpuna Maunga is held in trust for Ngā Mana Whenua and the other people of Auckland.
4. The Tūpuna Maunga Authority's Integrated Management Plan was unanimously adopted (Mana Whenua and Auckland Council members) by the Authority pursuant to the Ngā Mana Whenua o Tāmaki Makaurau Collective Redress Act 2014 and Reserves Act 1977. The Integrated Management Plan describes a series of "Values" and "Pathways" that guide all activities on the Tūpuna Maunga.
5. The Tūpuna Maunga Authority (Mana Whenua and Auckland Council members) unanimously adopted the Tūpuna Maunga Strategies at Hui 50 on 25 September 2020. The Tūpuna Maunga Strategies are 7 key sections that outline the strategic direction with regards to education, Biodiversity, Tūpuna Maunga design, Recreation, commercial activities and monitoring. Together with the IMP, these strategies inform guide and manage the activities undertaken on the Maunga.
6. The Authority administers the Tūpuna Maunga under the Reserves Act 1977 and pursuant to Ngā Mana Whenua o Tāmaki Makaurau Collective Redress Act 2014. The Hauraki Gulf Marine Park Act 2000 is also applicable in relation to Maungauika.

## Discussion

### *General and Policy*

7. The Authority has responded to a number of challenges that have been brought about by COVID-19 and the systems and levels changes that have had implications for Ngā Tūpuna Maunga, their visitors and occupants.
8. To better protect the Maunga the Authority has adopted policies to:

- assess, monitor and authorise commercial activities on the Tūpuna Maunga
  - manage any research activities on the Maunga;
  - regulate weddings on the Maunga and control locations of such events;
9. Guidelines have also been established to ensure adequate and appropriate support is provided to Mana Whenua to be able to undertake cultural activities on the Maunga.

***Guy Fawkes and Fire safety***

10. In addition to its policy work, the Authority has worked closely with Emergency New Zealand to progress fire management planning for the Maunga. Planning seeks to protect the Maunga as well as neighbouring properties.
11. The Tūpuna Maunga Authority has successfully implemented annual fire safety actions in the lead up to the dry summer periods. This included the Guy Fawkes campaign which started in 2020 with security presence and volunteers across the network. This has resulted in no fires on the Maunga during the Guy Fawkes period since the protection was instituted.

***Mahi mo te Taiao/ Jobs For Nature***

12. The Tūpuna Maunga Authority received confirmation of a successful application to the Jobs for Nature programme. This is a three-year conservation programme focused on revitalising communities from the impact of COVID-19 through creation of job and training opportunities. This opportunity has established key resources for the Authority's revegetation, pest plant and pest animal control programmes. The total funding available under this Agreement is \$3,000,000 (pls GST, if applicable).
13. New suppliers started works with planting on the Maunga.
14. A total of 13 FTEs are to be funded within this regime for the next three years.

***Vegetation Restoration***

15. Management have planted 30,323 new plantings spread across; Te Pane o Mataoho / Te Ara Pueru / Māngere Mountain, Maungarei / Mount Wellington, Ōtāhuhu / Mount Richmond, Puketāpapa / Pukewīwī / Mount Roskill, Matukutūruru / Wiri Quarry, Tītīkōpuke / Te Kōpuke / Mount Saint John, Te Tātua a Riukiuta / Big King, Ōhuiarangi / Pigeon Mountain, Maungauika / North Head and Maungawhau / Mount Eden during the 2022 planting season.
16. This is an addition to the (approximately) 64,202 plants already planted on Maunga over the last 3 years, bringing the total number of plants planted on Maunga to 94,525.
17. Ongoing management continues across Maunga to ensure high survival rates of these plants are prioritised, including maintenance, monitoring and reporting requirements.

***Pest Control***

18. The regular programme of pest animal and plant control has resumed on all Maunga with the recent Jobs for Nature contracts in place. These contracts undertake pest animal and plant management, restoration vegetation programme and implements both biodiversity and biosecurity monitoring to ensure positive conservation outcomes are gained.
19. Management have undertaken ongoing pest control on all Maunga for both pest plants and pest animals.
20. Rabbit control on Maunga continues with the aim of eradication across all sites. A rabbit contractor with a specialised rabbit dog to survey the Tūpuna Maunga. No rabbits were picked up by the dog or dog handler on Te Pane o Mataoho / Te Ara Pueru / Māngere, Maungakiekie

/ One Tree Hill and Ōhinerau / Mount Hobson. No obvious signs were noted nor evidence of recent burrowing.

21. This is a significant sign of how successful the rabbit eradication on Maunga has progressed. Ongoing rabbit control is undertaken on Ōtāhuhu / Mount Richmond and Maungarei / Mount Wellington where rabbit numbers are reported as being low (less than 10 )

### ***Track Upgrades***

22. Track upgrades have been completed / initiated during this term.
23. These upgrades have often required innovative solutions to allow public access while protecting the health and well-being of the Maunga. Please refer to item 7 of the Tūpuna Maunga Authority Open Agenda 69 (15 November 2021).
24. Some key tracks upgraded, or in progress, include:
- a. Ōhinerau/Mt Hobson access track and stairs
  - b. Maungakiekie/One Tree Hill tihi track
  - c. Tītīkōpuke/Te Kōpuke/Mt St John
  - d. Te Pane a Mataoho/Te Ara Pueru/Māngere
  - e. Maungarei/Mt Wellington
  - f. Maungawhau/Mt Eden
  - g. Takarunga/Mt Victoria
  - h. Maungauika/North Head
  - i. Te Tātua a Riukiuta/Big King

### ***Leases***

25. Tūpuna Maunga leases have been executed which recognise the privilege for lessees to occupy space on Maunga. These leases have rentals at market value (recognising that the lease site occupies a reserve).
26. The Applicant must produce a Tūpuna Maunga Outcomes Plan as an appendix to their lease. The Maunga Outcomes Plan provides methods for lessees who benefit from being on the Tūpuna Maunga to give back to the Tūpuna Maunga by committing to actions that:
- Protect, restore, and enhance the spiritual, ancestral, cultural, customary, and historical significance of the Tūpuna Maunga;
  - Support awareness and understanding of the Tūpuna Maunga Values
  - Build relationships that support mana whenua and council co-governance of the Tūpuna Maunga; and
  - Ensure activities are consistent with the Tūpuna Maunga Values.
27. During the term, the Authority has given approval for 13 Tūpuna Maunga leases to be executed.

### ***Community Involvement (Volunteer Framework)***

28. Management have worked closely with various community groups to further the work to protect the health and well-being of the Maunga, including:
- Ōwairaka Rat Baggers
  - Friends of Maungawhau
  - Restoring Takarunga Hauraki – Ngā Manu Maungauika, Takarunga Trappers
  - Matukutūruru – work with the Corrections Department on pest control
  - Te Pane a Mataoho/ Te Ara Pueru/ Māngere Mountain – various groups helping with planting and pest control.
  - Maungakiekie Songbird
29. Seventeen planting days have been held which have engaged volunteers, schools and corrections over the term.

***RMA Rōpū***

30. With increasing resource consent and resource management issues, the Authority established the RMA Rōpū as a sub-committee at Hui [16] on 16 October 2017. The Rōpū has sought to protect the Maunga from damage and negative impacts arising from some development and has focused on protecting the viewshafts (to, from, and between the Maunga) and restricting building heights and excavation around the Maunga.
31. The RMA Rōpū has responded to numerous applications and has submitted on various plan changes.
32. Finally, the RMA Rōpū filed a declaratory proceeding seeking to better protect the Maunga viewshafts. An agreement was reached with the Auckland Council whereby both parties are working to better define the protective planning regime for the Maunga.

***Signage***

33. Seven new entrance signs have been installed on the Tūpuna Maunga that prominently display the Māori and Pākehā names for the Maunga.
34. Approved design for physical structures to support wayfinding and information across the Maunga.
35. The intention of the wayfinding and information signage is to:
  - help manuhiri navigate safely around the Maunga,
  - reinforce key messages including staying on formed tracks.
  - strengthen the band and presence of the authority and,
  - assist with compliance with key policies such as smoking, alcohol, dogs and drone use.
36. Following a discussion with NZTA and Auckland Transport, signage on main highways was installed for Maungawhau / Mt Eden and Māngere Mountain. A programme has been established to roll this out for further Maunga.

***Tūpuna Maunga Authority Awards***

37. Te Ipu Kōrero o Maungawhau/ Maungawhau Visitor Experience Centre – Won a coveted gold award at the prestigious IDA International Design Awards. The gold award was achieved in the Print/ Signs, Exhibits and POP Displays category, against impressive competition from around the globe.
38. Maungawhau visitor centre was a finalist in the 2020 New Zealand Best Awards.
39. Maungawhau boardwalk – 2021 Registered Master Landscapers “Landscape of Distinction Awards”. Medal received.
40. Auckland Regional award 2022 from the NZ institute of architects as “Small Project”.
41. Shortlisted for National Architecture award (2022).
42. Shortlisted for NZ Institute of Landscape Architecture award (2022).

***Tūpuna Maunga Authority Research Scholarship***

43. The Tūpuna Maunga Authority announced an annual research funding of \$10,000 to support students research about the Tūpuna Maunga.
44. The funding has been made available under the TMA Education Strategy and as part of the newly developed Tūpuna Maunga Research Policy. The newly created funding opportunity



supports research projects that align with the Tūpuna Maunga Values (section 9, p59) and Tūpuna Maunga Strategies.

### ***Events Activations and Education Opportunities***

#### ***Public Events on the Maunga***

45. Processes have been developed and refined to support public events taking place on the Maunga, while maintaining Tūpuna Maunga values. This has included online forms published on to [www.Maunga.nz](http://www.Maunga.nz), enabling faster turnaround and easier processing of event applications.
46. 85 public events have been approved by the Authority to be held across the Tūpuna Maunga network.
47. In addition, the Authority has approved ten multi-year permits to the public.

#### ***Matariki activities***

48. A number of events across the Tūpuna Maunga were supported by management, including a presence at the Puketāpapa Manu Aute Kite day with activities for whanau to engage in.

#### ***Love your Maunga***

49. The 2020 'Love your Maunga' event was held at Te Pane o Mataoho/ Te Ara Pueru/ Māngere Mountain on Saturday 29 February. Attendance was estimated at around 2,000-5,000 people. Due to COVID, this event has not been able to be held since.

#### ***Love your Maunga ki Maungauika***

50. Funding was received from the ATEED Summer Festival Grant during the America's Cup to provide resourcing for operational costs to activate Maungauika during this event and the lead up races.
51. As part of the event, a number of Mana Whenua, Mataawaka and local artists were commissioned to provide art works for the Maunga.
52. Successful management of a complex event through January, February and March 2021. Over 19,000 people visited the Maunga during these events to view activations, static art and race cup viewing.

#### ***Mātātoa/ Time 2 Train activations***

53. Eight rākau based kēmu Māori activations were delivered on the Maunga during the school holidays in 2022.

#### ***Progress on Individual Maunga***

54. Activities and projects on individual Maunga include:

##### ***Matukutūruru / Wiri Mountain***

- Removal of pest plants on Maunga and ongoing pest animal trapping and baiting pulses.
- Restoration planting on Maunga undertaken with ongoing management including maintenance, monitoring and reporting requirements to ensure high survival rates of plants.

- Partnership with Department of Corrections with participants undertaking rubbish clean up and weed removal.
- Carpark reconfiguration - working through final construction details.
- Firebreaks work
- Trialling two new permeable aggregate products for future use on tracks. The trials include “Organic Lock” a basalt product bound by an organic binder and “DUSTEX” an organic dust suppressant that may help ensure fine aggregate materials do not leave the track surface.
- Moth plant biocontrol release. Releasing the moth plant biocontrol agent, *Freudeita cf. cupripennis* to control the ongoing issue on Moth plant surrounding the Maunga boundary.

#### **Maungakiekie/ One tree hill**

- Following feedback during COVID 19 lockdown, The Tūpuna Maunga Authority and Cornwall Park undertook a trial road closure to look at future options for more walking opportunities. At Hui [56] (20 July 2020) the Authority resolved to pedestrianize a section of the road.
  - Maungakiekie Birdsong Project supported by TMA operations with pest control advice.
- Landcare myrtle rust sampling undertaken
- Removal of pest plants on Maunga undertaken and ongoing pest animal trapping and baiting pulses.
- Key Maintenance of the Sorrento facility including exterior painting.
- Rental relief offered to lessee to assist with challenges associated with COVID-19
- Sorrento Maunga Outcomes plan finalised
- Stardome Maunga Outcomes plan finalised
- Stardome Māra Kai trial begun with garden bed laid.
- Planning continues for track upgrade, and vehicle circulation works.
- Firebreaks work
- Rabbit eradication programme with night shooting

#### **Maungarei/ Mt Wellington**

- Removal of pest plants on Maunga; ongoing pest animal trapping and baiting pulses.
- Restoration planting on Maunga undertaken with ongoing management including maintenance, monitoring and reporting requirements to ensure high survival rates of plants.
- Ongoing threatened plant management on Maunga.
- Rabbit eradication programme with night shooting
- Maungarei tihi loop track
- Pā Tūwatawata design and planning underway
- Annual review of Mt Wellington Roller Sports Club Maunga Outcomes Plan has been undertaken

- Drone survey work undertaken.
- Firebreaks work

***Maungauika/ North Head***

- Installed new signage and road art
- Devonport Peninsula Trust – Restoring Takarunga Hauraki/ Ngā Manu Maungauika Project supported by TMA operations, with funding provided to create trapping halo around the Maunga.
- Removal of pest plants on Maunga and ongoing pest animal trapping and baiting pulses.
- Native threatened plant garden upgraded.
- Restoration trackside planting on Maunga undertaken along new staircase down to Cheltenham Beach Reserve with ongoing management included.
- Heritage maintenance undertaken on summit battery and south battery
- Engineering Report obtained for heritage assets.
- Ki o rahi tournament held 19 May 2021.
- Work completed on Historic Tunnel. Strengthening project, re-enforcement beams placed in tunnels in the Northern, Southern and summit gun replacements.
- Cheltenham staircase completed
- Tracks and barriers work is completed.
- Firebreaks work

***Maungawhau/ Mt Eden***

- Hillside track renewal completed
- Telemetry set up for toilets near Kiosk completed
- Maungawhau kiosk leased to food and ice-cream businesses
- Ongoing planting and maintenance of mara kai.
- Removal of pest plants on Maunga undertaken and ongoing pest animal trapping and baiting pulses.
- Restoration planting on Maunga with ongoing management including maintenance, monitoring and reporting requirements to ensure high survival rates of plants.
- Stage 2 boardwalk and tihi works detailed design, consent finalised and construction underway
- Secondary track network completed.
- Firebreaks work
- Rabbit eradication programme with night shooting at Tahaki Rserve
- Lease outcomes plan for Youthtown reviewed

***Ōhinerau/ Mt Hobson***

- Removal of pest plants on Maunga undertaken and ongoing pest animal trapping and baiting pulses.
- Track enhancement work underway
- Rabbit eradication programme with night shooting
- Firebreaks work

***Ōhuirangi/ Pigeon Mountain***

- Rental relief offered to lessee to assist with challenges associated with COVID-19
- Maunga Outcomes Plan for Young Mariners finalised.
- Removal of pest plants on Maunga undertaken and ongoing pest animal trapping and baiting pulses.
- Restoration planting on Maunga with ongoing management including maintenance, monitoring and reporting requirements to ensure high survival rates of plants.

***Ōwairaka/ Te Ahi Kā a Rakataura/ Mt Albert***

- Installed new entrance sign
- Removal of pest plants on Maunga undertaken and ongoing pest animal trapping and baiting pulses.
- Restoration planting on Maunga with ongoing management including maintenance, monitoring and reporting requirements to ensure high survival rates of plants.
- Track upgrade design work progressing.
- Firebreaks work

***Te Ara Pueru/ Te Pane o Mataaho/ Māngere Mountain***

- Installed new entrance sign
- Māngere Bridge Playcentre Maunga Outcomes Plan finalised
- Removal of pest plants on Maunga undertaken and ongoing pest animal trapping and baiting pulses.
- Restoration planting on Maunga with ongoing management including maintenance, monitoring and reporting requirements to ensure high survival rates of plants.
- Track works and staircase installation completed
- Capital works have commenced on māra hūpara construction, scheduled to be completed by January 2023.
- Rabbit eradication programme with night shooting
- Firebreaks work

***Takarunga/ Mt Victoria***

- Depot Artspace Maunga Outcomes Plan reviewed.
- Planning and design for the lower loop track upgrade underway.

- Removal of pest plants on Maunga undertaken and ongoing pest animal trapping and baiting pulses.
- Firebreaks work

**Ōtāhuhu/ Mt Richmond**

- Restoration planting management and reporting undertaken.
- Capital works completed, including pedestrian friendly entrance ways and removal of redundant farming infrastructure.
- Removal of pest plants on Maunga undertaken and ongoing pest animal trapping and baiting pulses.
- Restoration planting on Maunga with ongoing management including maintenance, monitoring and reporting requirements to ensure high survival rates of plants.
- Rabbit eradication programme with night shooting
- Firebreaks work
- Moth plant biocontrol release. Releasing the moth plant biocontrol agent, *Freudeita cf. cupripennis* to control the ongoing issue on Moth plant surrounding the Maunga boundary.

**Te Kōpuke/ Tītīkōpuke/ Mt St John**

- Removal of pest plants on Maunga undertaken and ongoing pest animal trapping and baiting pulses.
- Restoration planting on Maunga with ongoing management including maintenance, monitoring and reporting requirements to ensure high survival rates of plants.
- Track works complete, including the new entrance from Warburton Ave
- Firebreaks work

**Te Tātua-a-Riukiuta/ Big King**

- Boardwalk completed using low impact piling technique to protect Maunga, other track work completed.
- Removal of pest plants on Maunga undertaken and ongoing pest animal trapping and baiting pulses.
- Restoration planting on Maunga with ongoing management including maintenance, monitoring and reporting requirements to ensure high survival rates of plants.
- Work is complete on a new section of stairs and boardwalks to protect rua on the Western flanks of the Maunga, track upgrades and the closure of damaging tracks.
- Firebreaks work

**Pukewīwī/ Puketāpapa/ Mt Roskill**

- Removal of pest plants on Maunga undertaken and ongoing pest animal trapping and baiting pulses.
- Restoration planting on Maunga with ongoing management including maintenance, monitoring and reporting requirements to ensure high survival rates of plants.
- Firebreaks work

### Attachments

There are no attachments for this report.



## Tūpuna Maunga planting update

Author: Jordan Winiata, Conservation Advisor/ Kaihautu Tiako Koi

<b>Purpose</b>	To update the Tūpuna Maunga Authority on the 2022 restoration planting programme
<b>Recommendations</b>	That the Tūpuna Maunga Authority: a) <b>note</b> the report.

### Background

- Key principles in the Tūpuna Maunga Integrated Management Plan are:
  - To highlight the importance of restoring the Tūpuna Maunga with indigenous ecosystems,
  - To reintroduce and attract indigenous and culturally appropriate species, and
  - To nurture and enhance the living connections between the Tūpuna Maunga and other areas of indigenous biodiversity in Tāmaki Makaurau.
- To reflect these principles, the ongoing restoration programme of planting native plants on the Tūpuna Maunga continues.

### Discussion - Restoration Planting Programme

- At Hui 75 (23 May, 2022), management updated the Tūpuna Maunga Authority on the restoration planting programme for the 2022 planting season.
- At the end of this planting season, a total of 30,323 new plantings were planted across the Maunga network between June – September 2022. These plantings are additional to the 102,869 plants already planted over the last 3 years (a total of 133,192 plants).
- The table below details the total plants planted this year

Tūpuna Maunga	Total plants	Community planting	Contractor
Te Pane o Mataoho / Te Ara Pueru / Māngere Mountain	11,303	2,786	8,517
Pukewīwī / Puketāpapa / Mount Roskill	2,135	1,925	210
Ōtāhuhu / Mount Richmond	7,304	3,357 (community) 1,532 (schools)	2,415
Maungarei / Mount Wellington	4,930	2,930	2,000 (to be planted by the end of

Tūpuna Maunga	Total plants	Community planting	Contractor
			September)
Matukutūruru / Wiri Quarry	1,706		1,706
Titikōpuke / Te Kōpuke / Mount Saint John	1,024		1,024
Te Tatua-a-Riukiuta / Big King	221		221
Ōhūiarangi / Pigeon Mountain	1,002		1,002
Maungauika / North Head	138		138
Maungawhau / Mount Eden	560		560

6. The Maunga were planted with appropriate plant species within the guidance of ecosystem type, site suitability, fire retardant and archaeologically appropriate species.
7. Management held 4 community planting days across the Maunga network; Te Pane o Mataoho / Te Ara Pueru / Māngere Mountain, Maungarei / Mount Wellington, Ōtāhuhu / Mount Richmond and Puketāpapa / Pukewīwī / Mount Roskill, and one schools planting on Ōtāhuhu / Mount Roskill with the Pacific Advance Secondary School (PASS).
8. Community and schools planting dates were best aligned with the Maramataka. Where dates didn't align with the Maramataka, this was due to the limits of contractor availability, school availability and weekend planting dates.
9. Community planting days were hosted by Tūpuna Maunga Management staff who welcomed community members to the planting day on the Maunga, inducted a planting tutorial for first time planters and put on a barbecue to finish off the event. Overall management had 277 registrations from the community who had interest in wanting to plant on Maunga.
10. For health and safety reasons, there are areas on Maunga where planting could only be undertaken using specialist contractors with the right qualifications and equipment to undertake the work.
11. The multi-year planting programme will continue in 2023 and onwards.

### Next steps

12. Management will continue with the ongoing restoration programme including planting maintenance, monitoring and reporting requirements.
13. Undertake planting site visits on Maunga, develop planting plans and schedule plant preparations.
14. Management will engage with nurseries, including those led by Mana Whenua, to supply plants for the 2023 planting season.

### Attachments

Attachment A: Photographs of planting days [↓](#) 







## Secondary tracks upgrade

Author: Liz Parkin, Kaihautū Hōtaka

<b>Purpose</b>	To consider a programme of track renewal across Matukutūruru, Maungarei, Te Pane a Mataaho / Te Ara Pūeru, / Māngere, Ōhinerau, Ōhūiarangi, Ōtāhuhu, and Te Tātua a Riukiuta
<b>Recommendations</b>	That the Tūpuna Maunga Authority:  a) <b>approve</b> proceeding with the detailed design and construction of tracks across the Maunga in accordance with the plans set out in the report.

## Background

1. Management have designed a programme of work to bring the remainder of the track network across the Maunga up to the Authority's accepted track standard.
2. The programme builds upon the significant upgrades already complete at six Maunga, and the approved plans for Ōwairaka / Te Ahi Ka-a-Rakataura, Takarunga and Maungakiekie. The intention of the track upgrades is twofold; to halt and repair damage to the Maunga caused by poorly located or maintained tracks, and to provide an improved, safer experience for visitors.
3. Feedback from previous hui, and further design investigations have refined the programme and it is presented here for approval

## Statutory and other considerations

4. Any decision to determine management within a reserve must take into account the legislative and policy framework.
5. Section 109(2) of Ngā Mana Whenua o Tāmaki Makaurau Collective Redress Act 2014 requires the Authority to have regard to the spiritual, ancestral, cultural, customary, and historical significance of the Maunga to Ngā Mana Whenua o Tāmaki Makaurau and that the Tūpuna Maunga is held in trust for Ngā Mana Whenua and the other people of Auckland.
6. The Tūpuna Maunga Authority's Integrated Management Plan (IMP) was adopted by the Authority in terms of Ngā Mana Whenua o Tāmaki Makaurau Collective Redress Act 2014 and the Reserves Act 1977. The Integrated Management Plan describes a series of "Values" and "Pathways" that guide all activities on the Tūpuna Maunga. The primary focus of the IMP is to protect the health and well-being of the Tūpuna Maunga. The "protection and enhancement of the mauri and wairua of the Tūpuna Maunga is paramount" (p57). As such the Authority must "tread gently" on the Maunga to ensure that only appropriate structures are built and that pathways and tracks limit the disturbance of, and impact on the Tūpuna Maunga. When considering new structures the Wairuatanga / Spiritual value guides the Authority to:  
"Appropriately locate, design and construct new structures, services, areas of planting and facilities to complement the landform, reduce or minimise visual distractions and respect cultural historical and spiritual values" (p58).
7. The Tūpuna Maunga Authority adopted the Tūpuna Maunga Strategies at Hui 50 on 25 September 2020. The Tūpuna Maunga Strategies are 7 key sections that outline the strategic

direction with regards to education, Biodiversity, Tūpuna Maunga design, Recreation, commercial activities and monitoring. Together with the IMP, these strategies inform guide and manage the activities undertaken on the Maunga. The Tūpuna Maunga design strategy is based on overarching principles that inform the direction of use and development. The following specific principles are relevant:

- a. All development will respect and maintain, and where appropriate, enhance and restore the mana of the Maunga.
  - b. Development will be restricted to that which is necessary to serve the values of the Maunga and the needs of both Mana Whenua and manuhiri to the Maunga.
  - c. Development materials and structures will seek to minimise impact on the Maunga and to achieve whole-of-life sustainability including a consideration of decommissioning.
  - d. Materials, colours and scale of development will be appropriate to the context and reflect the natural and/or cultural environment of the locality.
  - e. Impervious areas are progressively reduced to minimise erosion and stormwater generation facilitating more natural water systems.
8. The Authority administers the Tūpuna Maunga under the Reserves Act 1977 and pursuant to Ngā Mana Whenua o Tāmaki Makaurau Collective Redress Act 2014. The Hauraki Gulf Marine Park Act 2000 is also applicable in relation to Maungauika.
9. The upgrade and renewal of the track network across the Tūpuna Maunga is anticipated in the 2022/23 Tūpuna Maunga Operational Plan

## **Discussion –**

### ***Design Concepts***

10. Management confirms the use of the same design philosophies as used in the track programme so far. Specifically:
- a. all works will take place within areas already tracked;
  - b. the works will avoid excavation by building the track surface up above the existing surface and using screwpile technology where required;
  - c. boxed steps will be built above ground without cutting in; and
  - d. steep sections of boxed steps will include handrails for comfort, even if not required for fall heights.
11. Attachment A presents the proposals for each Maunga within the programme. The design responses are aggregate tracks, structures, boxed steps, asphalt replacement, mown grass tracks and decommissioning unwanted tracks.

### ***Recommendation***

12. Management recommends that the Authority approves proceeding with the detailed design and construction of tracks across the Maunga in accordance with the plans set out in this report and attachment. Should design work reveal the need for a significant departure from these plans, management will approach the Authority with the details for discussion.
13. Note that Management will bring back further designs for the Southern ridge at Te Pane a Mataoho / Te Ara Pūeru / Māngere Mountain and plans for Pukewīwī / Puketāpapa / Mt Roskill at a later date for future consideration.



## Attachments

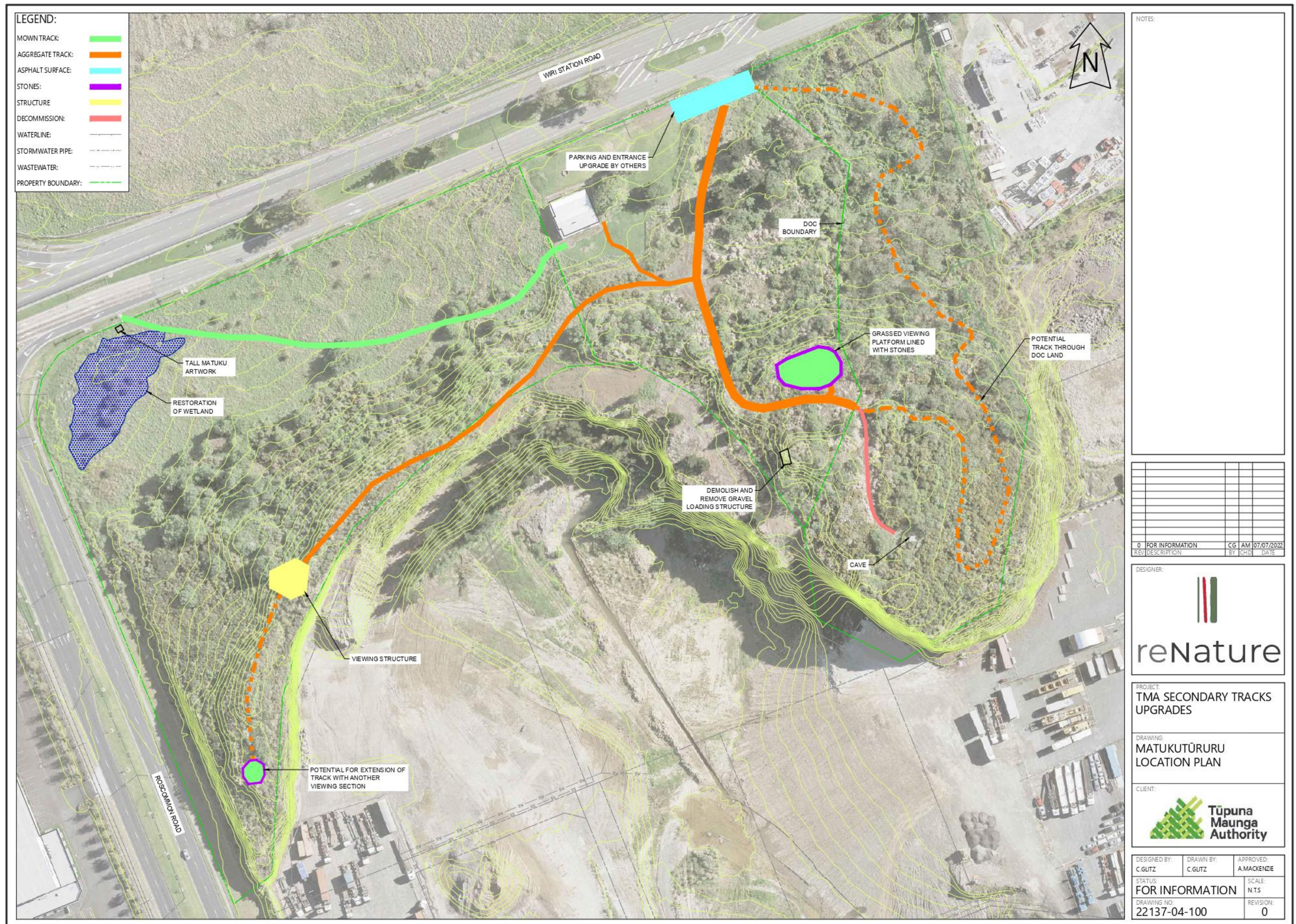
Attachment A: Secondary track upgrade plans by Maunga [↓](#) 

























C:\RiveNature Limited\P - Documents\2022\22137 TMA Secondary Tracks\6 Otāhuhu\3 CAD\10 Drawings\22137-05-Otāhuhu R2.dwg, 5/09/2022 6:29:09 pm











## Draft Individual Tūpuna Maunga Plans

Author: Nicholas Turoa, Kaiwhakahaere Te Waka Tairanga Whenua

<b>Purpose</b>	To publicise the release of the Draft Individual Tūpuna Maunga Plans document (Attachment A) for public feedback.
<b>Recommendations</b>	<p>That the Tūpuna Maunga Authority:</p> <ul style="list-style-type: none"><li>a) <b>adopt</b> the attached three Draft Individual Tūpuna Maunga Plans for public feedback.</li><li>b) <b>delegate</b> to the Chair and Deputy Chair the power to make any minor amendments to the three Draft Individual Tūpuna Maunga plans prior to publication.</li></ul>

### Background

1. The Tūpuna Maunga Integrated Management Plan (IMP) was adopted by the Authority on 23 June 2016 and replaced the separate and individual legacy reserve management plans. The IMP sets out the overarching policy setting and lays the foundations for how the Tūpuna Maunga (ancestral mountains) of Tāmaki Makaurau / Auckland are valued, protected, restored, enhanced and managed.
2. The Tūpuna Maunga Strategies (IMP Strategies) were adopted by the Authority on 25 September 2019. The IMP strategies were the next level of substantive policy development for the Tūpuna Maunga and gave effect to the Values and Pathways in the IMP.
3. The Individual Maunga plans (Maunga Plans) are the final tier of policy development and complete the series of documents as part of the Integrated Management Plan Framework, but they are not reserve management plans in terms of the Reserves Act 1977. The Plans will give effect to the Values, Pathways, Guidelines and Strategies and provide further detail with regards to the work the Authority is undertaking to enhance the health and well-being of the Tūpuna Maunga.

### Statutory and other considerations

4. The process and any decision to adopt an Operational Plan, and summary thereof, is required to take into account the legislative and policy framework.
5. Section 109(2) of Ngā Mana Whenua o Tāmaki Makaurau Collective Redress Act 2014 requires the Authority to have regard to the spiritual, ancestral, cultural, customary, and historical significance of the Maunga to Ngā Mana Whenua o Tāmaki Makaurau and that the Tūpuna Maunga is held in trust for Ngā Mana Whenua and the other people of Auckland.
6. The Tūpuna Maunga Authority's Integrated Management Plan was unanimously adopted (Mana Whenua and Auckland Council members) by the Authority pursuant to the Ngā Mana Whenua o Tāmaki Makaurau Collective Redress Act 2014 and the Reserves Act 1977. The

Integrated Management Plan describes a series of “Values” and “Pathways” that guide all activities on the Tūpuna Maunga.

7. At Hui 50 (25 September 2020), the Tūpuna Maunga Authority (Mana Whenua and Auckland Council members) unanimously adopted the Tūpuna Maunga Strategies. The Tūpuna Maunga Strategies are 7 key sections that outline the strategic direction with regards to education, Biodiversity, Tūpuna Maunga design, Recreation, commercial activities and monitoring. Together with the IMP, these strategies inform guide and manage the activities undertaken on the Maunga.
8. The Tūpuna Maunga are within the catchments that support the Hauraki Gulf. The purpose of the Hauraki Gulf Marine Park Act 2000, among other matters, is to “recognise the historic, traditional, cultural, and spiritual relationship of the tangata whenua with the Hauraki Gulf”.

## **Discussion**

### ***Public feedback***

9. Management have prepared, in draft, 3 of the 14 Maunga Plans as the first tranche of Tūpuna Maunga Plans for public engagement. The plans are attached to this document as Attachment A. The Draft Individual Tūpuna Maunga Plans that have been drafted are for:
  - Maungarei/ Mount Wellington
  - Ōhūiarangi/ Pigeon Mountain
  - Matukutūruru / Wiri Mountain.
10. Further tranches will be drafted in the next term of the Tūpuna Maunga Authority and made available for public comment.
11. The draft Individual Tūpuna Maunga Plans will be released for written public feedback over the same period as the Authority seeks feedback on its Draft Operational Plan in early 2023. The Draft Individual Tūpuna Maunga Plans will be sent to the Tūpuna Taonga o Tāmaki Makaurau Trust, key stakeholders, Local Boards, Ward councillors, and mana whenua. Hard copies will be made available at local libraries and Auckland Council service centres. The Draft Individual Tūpuna Maunga Plans will also available on the Authority’s website and advertisements will be placed in the print newspapers of the following news outlets:
  - NZ Herald
  - Central Leader
  - East and Bays Courier
  - Eastern Courier
  - Manukau Courier
  - North Shore Times
  - Devonport Flagstaff .

12. In the new term the Authority will consider the feedback and make any appropriate amendments with the intention of adopting the final Individual Tūpuna Maunga Plans at a future hui in 2023.

### **Attachments**

Attachment A: Draft Individual Maunga plans for Maungarei/ Mt Wellington, Ōhūiarangi/ Pigeon Mountain, Matukutūruru/Wiri Mountain [!\[\]\(e78f798d4ea5c530c9db49e7d26e6b95\_img.jpg\) !\[\]\(034433b90593e82e5460e34e3ed48e9b\_img.jpg\)](#)





DRAFT

Tūpuna Maunga o Tāmaki Makaurau  
**TŪPUNA MAUNGA PLANS**





Tūpuna Maunga o Tāmaki Makaurau Authority  
Approved TBC

ISBN

978-0-9941400-0-5 (Print) update

978-0-9941400-1-2 (PDF) update





1.	HOROPAKI / BACKGROUND AND CONTEXT	1
2.	MATUKUTŪRURU / WIRI MOUNTAIN	9
3.	MAUNGAKIEKIE / ONE TREE HILL*	20
4.	MAUNGAREI / MT WELLINGTON	22
5.	MAUNGAUIKA / NORTH HEAD*	33
6.	MAUNGAWHAU / MT EDEN*	35
7.	ŌHINERAU / MT HOBSON*	37
8.	ŌHUIARANGI / PIGEON MOUNTAIN	39
9.	ŌTĀHUHU / MT RICHMOND*	49
10.	ŌWAIKAKA /TE AHI-KĀ-A-RAKATAURA / MT ALBERT*	51
11.	PUKEWĪWĪ / PUKETĀPAPA / MT ROSKILL*	53
12.	TAKARUNGA / MT VICTORIA*	55
13.	TE ARA PUERA / TE PANE-O-MATAAHO / MĀNGERE MOUNTAIN*	55
14.	TE KŌPUKE /TĪTĪKŌPUKE / MT ST JOHN*	55
15.	TE TĀTUA A RIUKIUTA / BIG KING*	55

\* Maunga Plan to come



DRAFT

‘Maunga tū Maunga ora,  
Maunga ora Tāmaki ora’  
‘If the Maunga are well then  
Tāmaki Makaurau is well’

## 1. HOROPAKI / BACKGROUND AND CONTEXT

- 1.1 In 2014, following five years of Te Tiriti o Waitangi/Treaty of Waitangi settlement negotiations, the Ngā Mana Whenua o Tāmaki Makaurau Collective Redress Act 2014 (“Collective Redress Act”) legislated the Collective deed of settlement.
- 1.2 Under the Collective Redress Act, 14 Tūpuna Maunga were transferred to the 13 iwi/hapū of Ngā Mana Whenua o Tāmaki Makaurau (“Ngā Mana Whenua”) via the collective legal entity; the Tūpuna Taonga o Tāmaki Makaurau Trust (“Tūpuna Taonga Trust”).
- 1.3 The Tūpuna Maunga are held by the Tūpuna Taonga Trust for the common benefit of the iwi/hapū of Ngā Mana Whenua and the other people of Auckland. The reserve status for each Tūpuna Maunga under the Reserves Act 1977 (“Reserves Act”) was maintained by the Collective Redress Act.
- 1.4 Governance and administration of the Tūpuna Maunga is undertaken by the Tūpuna Maunga o Tāmaki Makaurau Authority (“Tūpuna Maunga Authority”)<sup>1</sup>, a statutory co-governance authority has equal representation from Ngā Mana Whenua and Auckland Council, with one (non-voting) Crown representative. The relationship between those who own, govern and manage the Tūpuna Maunga is set out in Figure 1.
- 1.5 The Tūpuna Maunga Authority represents a new era in the governance and management of the Tūpuna Maunga and will ensure that mana whenua world views and priorities, and the strong living connections and continued public access that all communities have with these special places, is woven into their unified and cohesive long-term care.

1. Te Ara Pueru / Te Pane-o-Mataaho / Māngere Mountain and Maungakiekie / One Tree Hill northern land are also administered by the Tūpuna Maunga Authority under the Collective Redress Act and Reserve Act noting that ownership of the land remains with the Crown.

DRAFT

FIGURE 1: TŪPUNA MAUNGA  
OWNERSHIP - GOVERNANCE - MANAGEMENT

## 14 Tūpuna Maunga

### Tūpuna Taonga o Tāmaki Makaurau Trust

Tūpuna Maunga  
vested in the Trust  
on behalf of Ngā  
Mana Whenua o  
Tāmaki Makaurau

### Ngā Mana Whenua o Tāmaki Makaurau

13 iwi/ hapū of Tāmaki  
Makaurau having three  
rōpū:

---

Marutūāhu Rōpū

---

Ngāti Whātua Rōpū

---

Waiohua-Tāmaki Rōpū

### Tūpuna Maunga Authority

Independent statutory  
authority that administers  
the Tūpuna Maunga for the  
common benefit of the iwi and  
hapū of Ngā Mana Whenua  
o Tāmaki Makaurau and the  
other people of Auckland

6 Ngā Mana Whenua  
members (two  
representatives from  
each rōpū)

---

6 Auckland  
Council members  
(3 ward councillors and  
3 local board members)

---

One non-voting Crown  
member

### Auckland Council

Routine management of  
Tūpuna Maunga  
(day to day operations)

---

Administrative support to  
Authority

DRAFT

- 1.6 On 23 June 2016, the Tūpuna Maunga Authority adopted the Integrated Management Plan 2016 ("IMP"). The IMP outlines the Tūpuna Maunga Authority's long-term vision for the Tūpuna Maunga and sets the direction for protection, restoration, enhancement and appropriate use of the Tūpuna Maunga. The primary focus of the Integrated Management Plan is to protect the health and well-being of the Tūpuna Maunga.
- 1.7 The IMP sets out Values and Pathways to achieve the integrated outcomes for all the Tūpuna Maunga.
- a. The Values provide the tika (correct) framework for the care and protection of the Tūpuna Maunga.
  - b. The Pathways elaborate and give tangible expression to the Values. They are guiding principles and objectives that set the direction for the Tūpuna Maunga Authority to protect and care for the Tūpuna Maunga and provide a crucial framework for decision-making.

- 1.8 The Values are set out below, and the associated Pathways are set out in Figure 2:

Wairuatanga / Spiritual
Mana Aotūroa / Cultural and Heritage
Takotoranga Whenua / Landscape
Mauri Pūnaha Hauropi / Ecology and Biodiversity
Mana Hononga Tangata / Living Connection
Whai Rawa Whakauka / Economic and Commercial
Mana Whai a Rēhia / Recreational

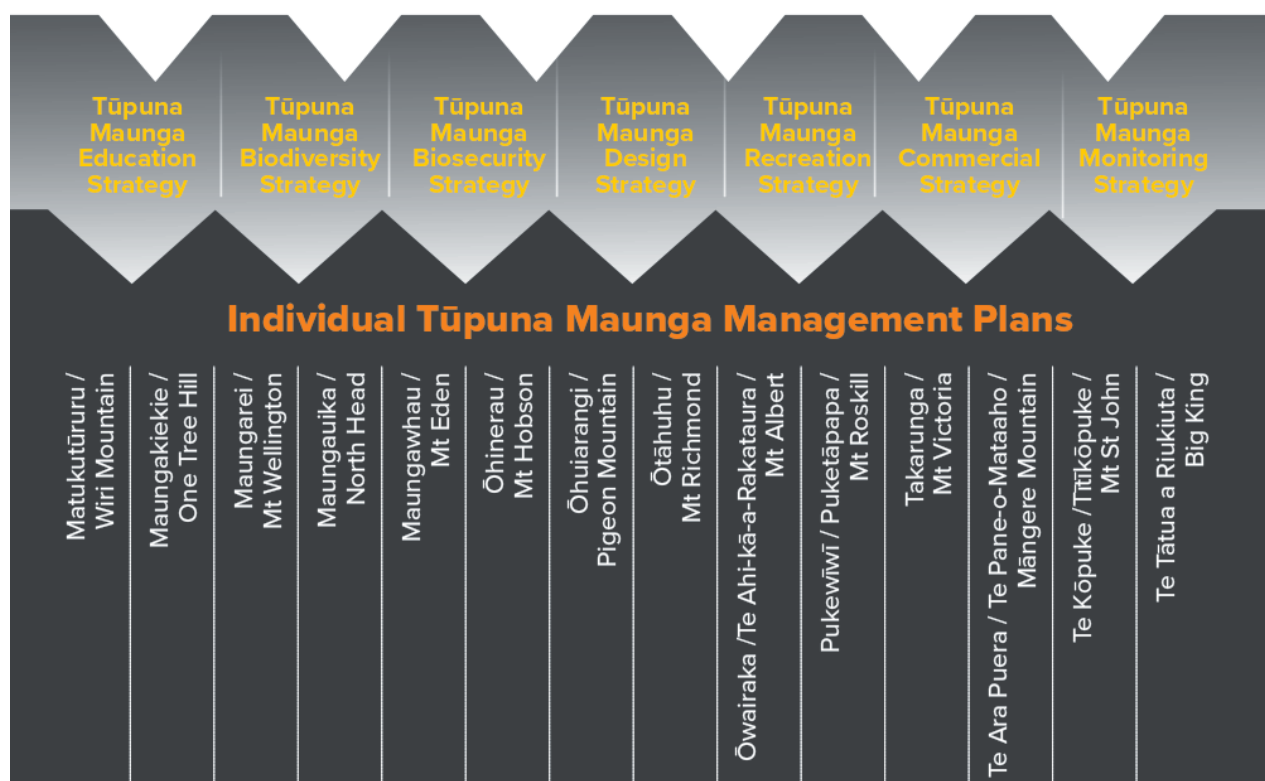


FIGURE 2: VALUES AND PATHWAYS <span>DRAFT</span>	
VALUE	PATHWAYS
<b>WAIRUATANGA / SPIRITUAL</b>	<ul style="list-style-type: none"> <li>• Restore and recognise the relationship between the Maunga and its people.</li> <li>• Recognise the tihi is sacred.</li> <li>• Tread gently.</li> <li>• Treat the Maunga as taonga tuku iho – treasures handed down the generations.</li> </ul>
<b>MANA AOTŪROA / CULTURAL AND HERITAGE</b>	<ul style="list-style-type: none"> <li>• Enable mana whenua role as kaitiaki over the Tūpuna Maunga.</li> <li>• Recognise European and other histories, and interaction with the Maunga.</li> <li>• Encourage culturally safe access.</li> <li>• Restoring customary practices and associated knowledge.</li> </ul>
<b>TAKOTORANGA WHENUA / LANDSCAPE</b>	<ul style="list-style-type: none"> <li>• Protect the integrity of the landscape of the Tūpuna Maunga.</li> <li>• Active restoration and enhancement of the natural features of the Maunga.</li> <li>• Encourage activities that are in keeping with the natural and indigenous landscape.</li> <li>• Encourage design that reflects Tūpuna Maunga values.</li> <li>• Promote a connected network of Tūpuna Maunga.</li> <li>• Preserve the visual and physical integrity of the Maunga as landmarks of Tāmaki.</li> </ul>
<b>MAURI PŪNAHA HAUROPI / ECOLOGY AND BIODIVERSITY</b>	<ul style="list-style-type: none"> <li>• Strengthen ecological linkages between the Tūpuna Maunga.</li> <li>• Maunga tū mauri ora, Maunga tū makaurau ora / if the Maunga are well, auckland is well.</li> <li>• Protect and restore the biodiversity of the Tūpuna Maunga.</li> </ul>
<b>MANA HONONGA TANGATA / LIVING CONNECTION</b>	<ul style="list-style-type: none"> <li>• Rekindle the sense of living connection between the Maunga and the people.</li> <li>• Give expression to the history and cultural values of the Tūpuna Maunga.</li> <li>• Actively nurture positive relationships.</li> <li>• A place to host people.</li> </ul>
<b>WHAI RAWA WHAKAUKA / ECONOMIC / COMMERCIAL</b>	<ul style="list-style-type: none"> <li>• Alignment with the Tūpuna Maunga values.</li> <li>• Foster partnerships and collaboration.</li> <li>• Focus on commercial activities that create value and enhance experience.</li> <li>• Explore alternative and self-sustaining funding opportunities.</li> </ul>
<b>MANA WHAI A RĒHIA / RECREATIONAL</b>	<ul style="list-style-type: none"> <li>• Balance informal and formal recreation.</li> <li>• Encourage informal inclusive recreational activities.</li> <li>• Recreational activities consistent with tikanga Māori.</li> <li>• Maunga are special places and treasures handed down.</li> <li>• Promote health and wellbeing.</li> </ul>

DRAFT

FIGURE 3: INTEGRATED MANAGEMENT PLAN FRAMEWORK

## Tūpuna Maunga Integrated Management Plan



### Individual Tūpuna Maunga Management Plans

- 1.9 The IMP established a tiered strategic framework to guide the management of the Tūpuna Maunga as set out in Figure 3. Sitting below the IMP is a series of Tūpuna Maunga Strategies. The Tūpuna Maunga Strategies aim to broaden the understanding of the wider Tāmaki Makaurau community of the importance of Tūpuna Maunga o Tāmaki Makaurau to mana whenua and encourage their involvement in the unified and long-term care of these special places. The Strategies acknowledge the diverse worldviews that add richness to the relationship Aucklanders have with Tūpuna Maunga. The Strategies are a companion policy document to the IMP and establish an integrated framework of principles and elements that guide kaupapa (decision-making) on the management of the Tūpuna Maunga. There are six high level Strategies: education, design, biodiversity, biosecurity, recreation and commercial, along with a monitoring strategy that assist in guiding how the Tūpuna Maunga are valued, restored, protected and managed.

DRAFT

- 1.10** Reinforcing and growing connections with the Maunga will be enabled through engagement, interaction and partnership creating opportunities to learn together and enhance manaakitanga (mutual respect). Development on the Maunga will respect and respond to the underlying cultural, natural and historic heritage values. Restoration of the Tūpuna Maunga offers an opportunity to reinstate and reconnect the ecology and biodiversity of the Maunga, and the wider volcanic landscape across Tāmaki Makaurau. The future provision of pest management and biosecurity will focus on the use of technology to progress an innovative and effective approach, encouraging community relationships and connection with the protection of biodiversity values. The future provision of recreational activities and facilities will reflect mana whenua values, celebrate important features and provide experiences which connect recreational users with the whenua. The development or renewal of any recreational assets will represent and embody cultural, spiritual, heritage and ecological values. The pursuit of appropriate commercial revenue will promote the values and pathways and provide a sustainable revenue stream to ensure such outcomes are achieved longer-term.
- 1.11** Below the Tūpuna Maunga Strategies, each of the Tūpuna Maunga has its own Tūpuna Maunga Plan. These Plans reflect the Values and Pathways of the IMP and the overarching Tūpuna Maunga Strategies and set out in detail how these will be applied to ensure the care, restoration and management of each Tūpuna Maunga.
- 1.12** The Tūpuna Maunga Plans set out the iwi/hapū with interests in the Maunga, the vision for the Maunga, the history of the Maunga, the background to the name of the Maunga, the mana whenua associations, activities (present and future), future development plans, and a monitoring programme.
- 1.13** Each of the Tūpuna Maunga Plans includes a Statement of Association. A Statement of Association details the relationship between iwi or hapū within a Statutory Acknowledgement area. A Statutory Acknowledgement is a formal acknowledgement by the Crown that recognises the particular cultural, spiritual, historical and traditional association an iwi has with a site of significance or resource identified as a statutory area. The Deed sets out the details of the Settlement between the Crown and iwi and typically includes a Statement of Association.
- 1.14** The Statements of Association included in the Tūpuna Maunga Plans are extracted directly from the applicable Deeds of Settlement. The Deeds have been sourced from the Te Kāwanatanga o Aotearoa (New Zealand Government) website.
- 1.15** The IMP and the subsequent companion strategies, guidelines and Tūpuna Maunga Plans are implemented through the annual Tūpuna Maunga Operational Plan. Figure 4 describes the policy framework that collectively informs, guides and manages the activities on the Maunga.





FIGURE 5: MAUNGA LOCATIONS



DRAFT

## 2. MATUKUTŪRURU / WIRI MOUNTAIN

Maunga tū Maunga ora, Maunga ora Tāmaki ora  
If the Maunga are well, Tāmaki Makaurau is well



## 2.1 NGĀ MANA WHENUA IWI /HAPŪ WITH INTERESTS IN THE MAUNGA

**2.1.1** The following iwi / hapū have recorded associations to Matukutūruru. Each of these iwi hold their own histories and kōrero pertaining to the Maunga. It is up to each individual iwi to choose how they wish to share these stories. Click on the links provided to take you to where these stories have been recorded.

- Ngāi Tai ki Tāmaki
- Ngāti Maru
- Ngāti Tamaoho
- Ngāti Tamatera
- Ngāti Te Ata
- Ngāti Whanaunga
- Ngāti Whātua Ōrākei
- Ngāti Whātua o Kaipara
- Te Ākitai Waiohū
- Te Kawerau ā Maki

## 2.2 NGĀ MOEMOEĀ O NGĀ MAUNGA / THE VISION FOR MATUKUTŪRURU

**2.2.1** The vision for Matukutūruru is enhance the mauri of the Maunga. Matukutūruru is part of a local volcanic field that borders the Manukau Harbour. Matukutūruru has largely been destroyed, with only a small remnant of the Maunga remaining. The Maunga is home to the Wiri lava cave, Auckland's longest known lava cave and home to rare stalactites. Rumney Cottage, built in 1928 using rock from the Maunga is the only building on the Maunga.

**2.2.2** To enhance the mauri of the Maunga, it is proposed to work with the Tūpuna Taonga Trust to refurbish Rumney Cottage for an appropriate use, install an entrance and gathering area at the front of the Cottage and connect it to a visitor car park. Existing tracks will be refurbished, and new walking tracks established, including a new track to a lookout area with stone seating and low planting. The lookout area will provide visual connections to Matukutūreia, Māngere, Maungarei and other Maunga. New artwork, storytelling and cultural interpretation is proposed. Redundant structures will be removed. Weed and pest control will be continued. The entry to lava caves will be located and protected.



DRAFT

## 2.3 NGĀ WHAKAPAPA O NGĀ MANA WHENUA HISTORY AND MANA WHENUA ASSOCIATIONS

- 2.3.1** The Maunga were a network of fortified pa across Tāmaki Makaurau. The Maunga made ideal pa sites in their time providing protection to people living there, with defensive measures that took full advantage of higher ground. The adaptable, fertile volcanic soils also offered opportunities to cultivate food and kūmara gardens and construct terraces, walls, storage pits, mounds and middens along the slopes.
- 2.3.2** Through colonisation Matukutūruru was confiscated from mana whenua in the 1860's, with part of the Maunga being returned to the Tūpuna Taonga Trust in 2014, and part (the caves) are in the process of being returned to Te Ākitai Waiohū as part of their treaty settlement.

### INGOA / THE NAME – MATUKUTŪRURU

- 2.3.3** Matukutūruru, together with the adjacent Matukutūreia, are known as Ngā Matukurua or 'the two bitterns'. Matuku (bittern) are a wetland bird that was once an abundant species within the Manukau area.
- 2.3.4** Matukutūreia is the 'watchful bittern' named after a chief who saved his people attack, and Matukutūruru is 'the careless bittern' named after a chief who was attacked after falling asleep. The contemporary name of Matukutūruru and surrounding area Wiri comes from Te Wirihana Takaanini, a paramount chief of Te Ākitai. More detail is provided in the Te Ākitai Waiohū Statement of Association below.

### WHAKAPIRI / STATEMENTS OF ASSOCIATION:

- 2.3.5** The following Statements of Association are extracted directly from the Ngā Mana Whenua o Tāmaki Makaurau Collective Redress Deed 2012.
- 2.3.6** The Deeds have been sourced from the Te Kāwanatanga o Aotearoa (New Zealand Government) website.
- 2.3.7** It is left to iwi, to decide how, and if, they wish to share their kōrero for the Maunga.

### NGĀTI TAMAOHO

- 2.3.8** Ngāti Tamaoho's relationship with the whenua and the Maunga of Tāmaki Makaurau is central to its distinctive identity and lineage through the ancient Nga Oho people to the period of earliest settlement of Auckland; and its connection to the mauri of the Maunga, and the mana that accompanied that original occupation of land. This ancient ancestral lineage of Ngāti Tamaoho provides a cultural base that delivers cultural strength, certainty and mana to this day.
- 2.3.9** Ngāti Tamaoho have longstanding spiritual, ancestral, cultural, customary and historical interests in this group of Maunga through being an integral part of the Te Waiohū confederation, which over time occupied these places, bringing to all the constituent hapu a source of mana, spiritual wellbeing, livelihood, security and shelter that customarily sustained all its people. Respect for the mana of the Maunga (spiritual authority, protective power, and prestige) of all of the congregation of Maunga, is at the heart of the relationship between Ngāti Tamaoho and their Maunga.
- 2.3.10** Māngere Mountain and Matukutūruru was a Waiohū pa.

DRAFT

#### TE ĀKITAI WAIOHUA

- 2.3.11** Matukutūruru is a Waiohua pa site that was also utilised for kumara and food gardens.
- 2.3.12** The numerous volcanic Maunga in Tamaki Makaurau made ideal pa sites in their time, providing protection to the people living there, with defensive measures that took full advantage of higher ground. The adaptable, fertile volcanic soils also offered opportunities to cultivate food and kumara gardens and construct terraces, walls, storage pits, mounds and middens along the slopes.
- 2.3.13** Kiwi Tamaki, progenitor of Te Akitai Waiohua and paramount chief of Waiohua, stayed mainly at Maungakiekie (One Tree Hill.) He seasonally moved between different Maunga pa sites and ( stayed at each of them as it came time to harvest various types of food - fish, shellfish, birds, bird eggs and vegetables.
- 2.3.14** Matukutūruru is one of a pair of volcanic cones known as Nga Matukurua or 'the two bitterns.' The other cone, Matukutūreia (McLaughlin's Mountain) or 'the watchful bittern' was named after the Waiohua chief whose vigilance saved his people from being attacked at the pa. Matukutūruru is the 'careless bittern' or 'bittern standing at ease' named after the chief who was assaulted at the pa after falling asleep at the end of a fishing expedition.
- 2.3.15** The contemporary name of the Maunga and surrounding area Wiri comes from Te Wirihana Takaanini, a paramount chief of Te Akitai Waiohua and direct descendant (great great grandson) of Kiwi Tamaki.
- 2.3.16** The historical, cultural and spiritual association of Te Ākitai Waiohua with the Maunga of Tamaki Makaurau is essential to the preservation and affirmation of its tribal identity.
- 2.3.17** These Maunga were places of protection and sustenance for generations of Waiohua and were occupied through to the end of Kiwi Tamaki's leadership at a time when the community was at its ( height in strength, unity and stability. Waiohua engaged in traditional and symbolic cultural practices on the Maunga, but they were also homes where the people lived, fought and died.
- 2.3.18** Thus the history of the Maunga serves as a record of the stories and experiences that have shaped Te Ākitai Waiohua to this day and will continue to do so in the future.

DRAFT

HOROPAKI / LOCATION MAP

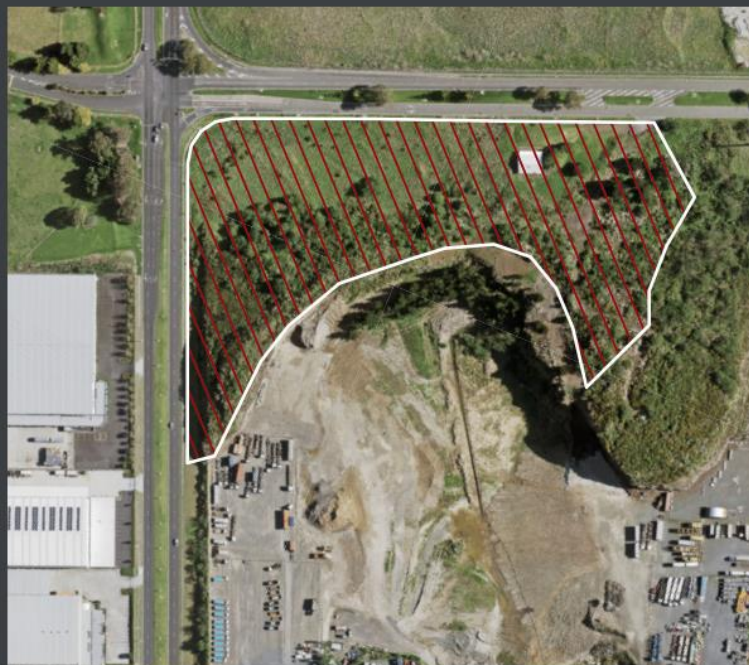
Matukutūruru /  
Wiri Mountain

NGĀ MARAE / LOCAL MARAE

Maunga ▲  
Marae ●

DRAFT

MAHIRI PAEINGA / ZONING MAP



Historic Reserve

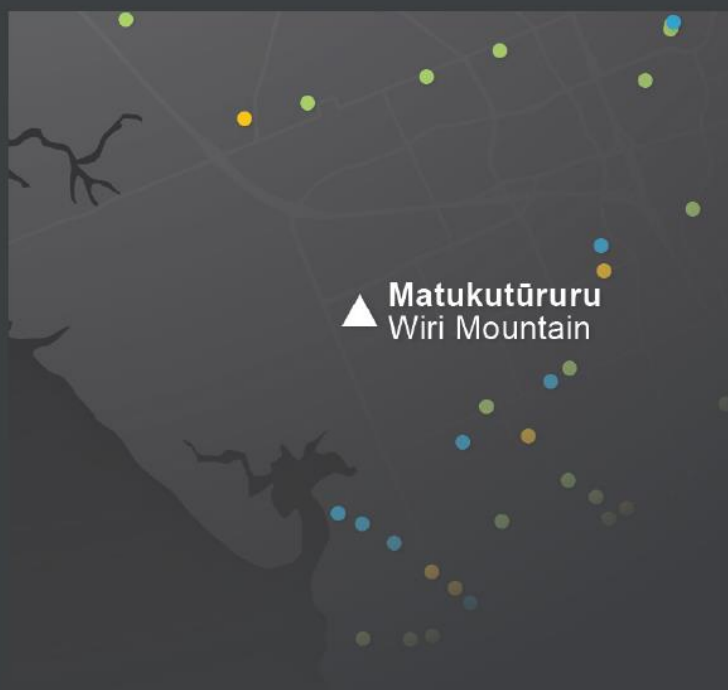


Legal Boundary



Dog Off-Leash Areas

WĀHI MĀTAURANGA / LOCAL EDUCATIONAL FACILITIES



▲ Maunga

● School

● Pun Reo or Kōhanga Reo

● Kura Rumaki Reo or Kura Kaupapa Māori

● University or Private Training Establishment



DRAFT

## 2.4 NGĀ MAHINGA ACTIVITIES

### NGĀ MAHINGA ME NGĀ WAIHANGA I NĀIANEI / PRESENT ACTIVITIES AND INFRASTRUCTURE

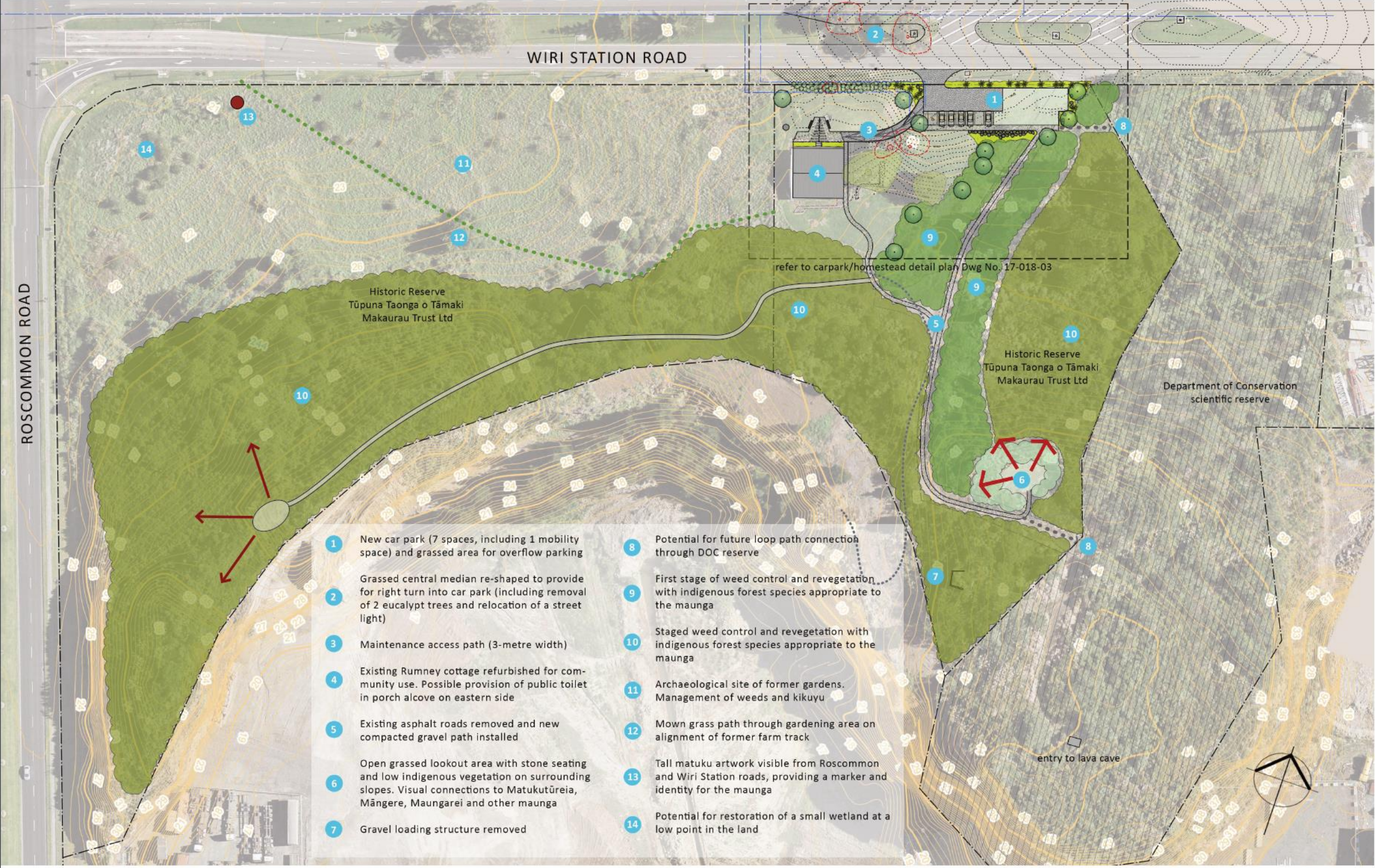
- Cultural Activities
- Third party Infrastructure (Watercare Easement)
- Dog Access – refer [www.Maunga.nz](http://www.Maunga.nz)

### NGĀ MAHINGA Ā MUA / FUTURE PROJECTS 2021-2031

THEME	PROJECT	1-3 YRS	3-6 YRS	6-10YRS
Healing the Maunga	Cultural interpretation	●	●	
	Pou			
	Vegetation restoration	●		
	Carpark, entrance ways and gates	●		
	Track upgrade	●		
	New track maintenance		●	●
	Geotech monitoring			●
Education, Communications & Partnerships	Story telling and interpretation	●		
	Signage	●	●	
Biodiversity Biosecurity	Pa Harakeke	●		
	Rongoā	●		
	Pest Proof fencing		●	●
	Kiwi sanctuary			●
	Research projects		●	
	Biodiversity Programme	●	●	●
Commercial	Commercial building Renewals		●	
	Tenancy building renewals		●	



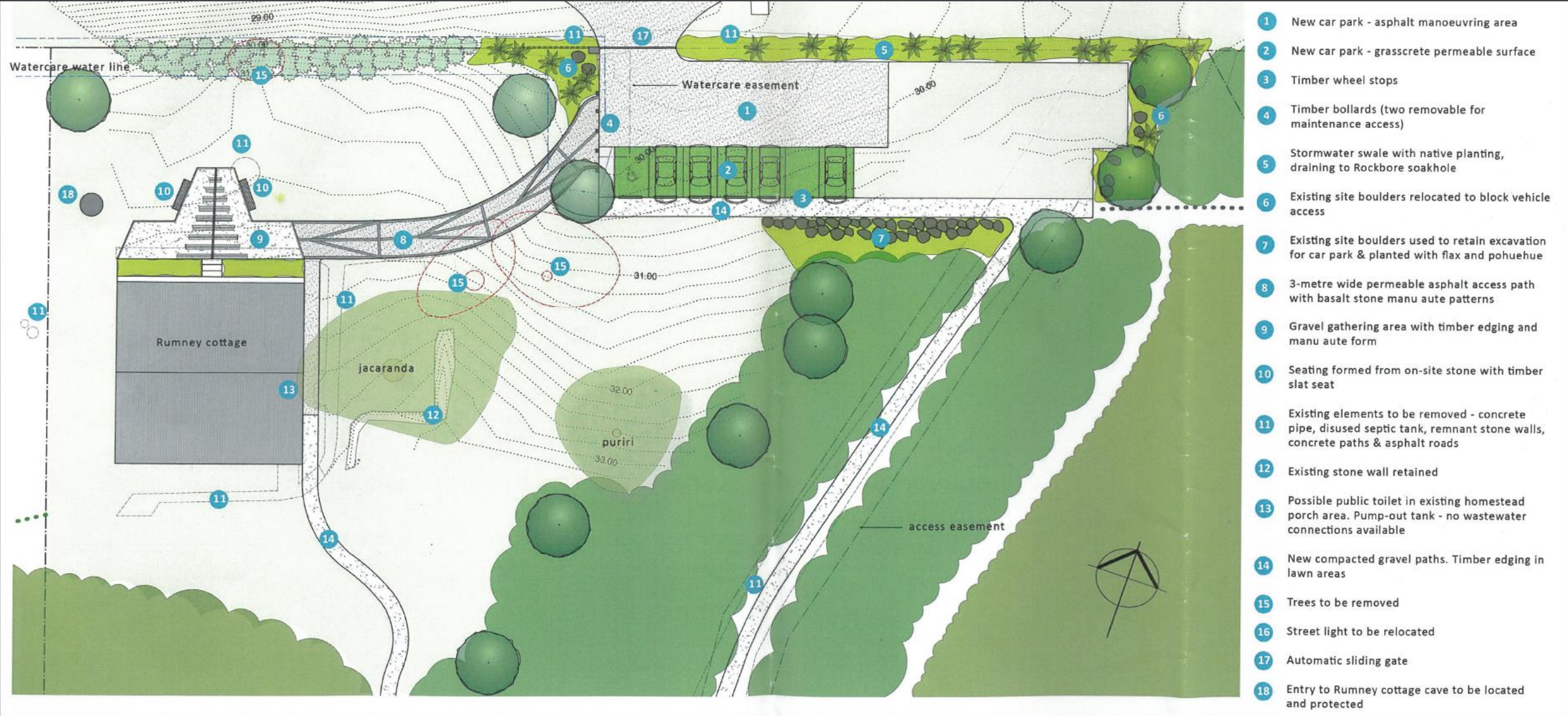
NGĀ MAHINGA Ā MUA /INDICATIVE FUTURE PROJECT PLANS





DRAFT

DRAFT





DRAFT



## 2.5 AROTURUKI MONITORING AND REVIEW

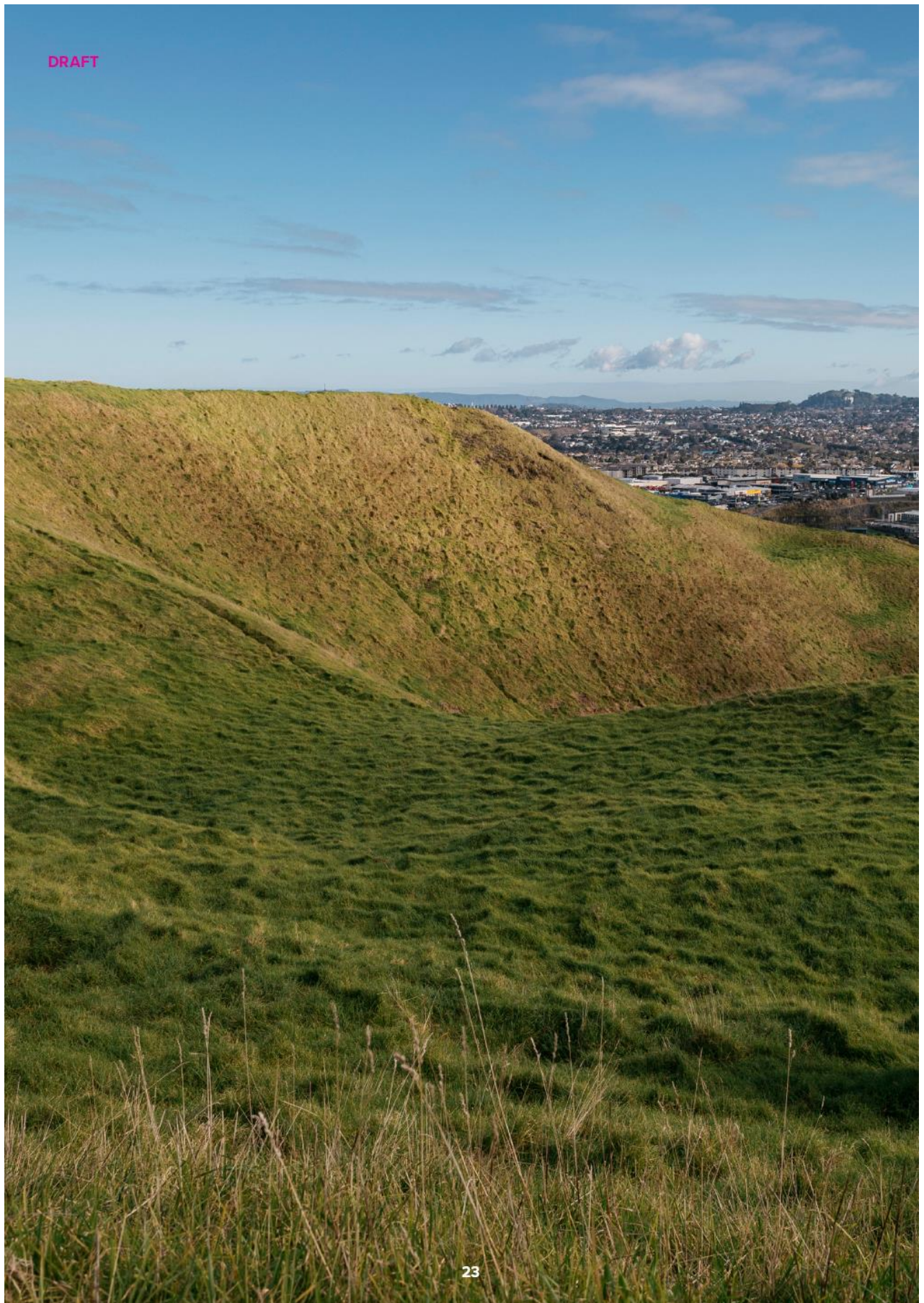
- 2.5.1** The IMP specifically recognises the need for review through the identification of the Monitoring Strategy. The Tūpuna Maunga Monitoring Strategy sets out that each Tūpuna Maunga Plan will have Maunga specific targets.
- 2.5.2** The specific targets for Matukutūruru are:
- Have the future projects been implemented within the specified time frames?
  - Has an appropriate and viable use for Rumney Cottage been established?
  - Are visitor numbers and recreational usage increasing?
  - Are the pūrākau (stories) of Matukutūruru being passed on to future generations?
  - Is the lava cave being protected?
  - Is biodiversity improving?
  - Are pest numbers reducing?
  - Is the community valuing the work the Tūpuna Maunga Authority have undertaken on the Maunga
- 2.5.3** The Matukutūruru Tūpuna Maunga Plan will be updated annually following adoption of the Tūpuna Maunga Operational Plan.

DRAFT

## 4. MAUNGAREI / MT WELLINGTON

Maunga tū Maunga ora, Maunga ora Tāmaki ora  
If the Maunga are well, Tāmaki Makaurau is well





DRAFT

## 4.1 NGĀ MANA WHENUA IWI /HAPŪ WITH INTERESTS IN THE MAUNGA

**4.1.1** The following iwi / hapū have recorded associations to Maungarei. Each of these iwi hold their own histories and kōrero pertaining to the maunga. It is up to each individual iwi to choose how they wish to share these stories. Click on the links provided to take you to where these stories have been recorded.

- Ngāi Tai ki Tāmaki
- Ngāti Maru
- Ngāti Paoa
- Ngāti Tamaoho
- Ngāti Tamaterā
- Ngāti Te Ata
- Ngāti Whanaunga
- Ngāti Whātua Ōrākei
- Ngāti Whātua o Kaipara
- Te Ākitai Waiohū
- Te Kawerau ā Maki
- Te Patukirikiri
- Te Rūnunga o Ngāti Whātua

## 4.2 NGĀ MOEMOEĀ O NGĀ MAUNGA / THE VISION FOR MAUNGAREI

**4.2.1** The vision for Maungarei is to enhance the mauri of the maunga, improve the visitor experience, understanding and respect for the maunga.

**4.2.2** A Pā tūwatawata representation is proposed to be constructed. Pou and other cultural infrastructure will be established.

**4.2.3** A programme of weed and pest control will be continued. Over time unsafe and aging trees are to be removed from Winifred Huggins Reserve and replaced with native species. A name change for this area may also be considered. The Tūpuna Maunga Authority will work with the local community to develop a halo of pest control around the maunga. Native species corridors from Maungarei to other Maunga will be identified and enhanced. The Anogramma and other endemic ferns on the Maunga will continue to be protected. Opportunities for propagation and plantings on the Maunga will be investigated.

**4.2.4** Tracks are proposed to be upgraded, and signage including track maps are proposed to be installed. Story telling signage that brings Mana Whenua stories and values to life on the Maunga will be installed at appropriate locations. The current roadway surface will be reviewed and permeable alternatives explored. Permanent infrastructure to slow traffic will be installed.

**4.2.5** Dedicated amenity areas including picnic tables, and chairs to enable enjoyment of the quiet respite of the Tūpuna Maunga are proposed. The Tūpuna Maunga Authority will work with LINZ to explore the removal of the Trig Infrastructure with Surveying reference points to be taken from proposed pā tūwatawata. If required appropriate tourism infrastructure will be installed. Te Ki o Rahi fields and associated infrastructure are proposed. The game of Ki o Rahi stems from the legend of Rahitutakahina and Tiarakurapakewai.

**4.2.6** The Tūpuna Maunga Authority will work with Auckland Council to explore the potential for contiguous lands to be incorporated into the maunga.





#### 4.3 NGĀ WHAKAPAPA O NGĀ MANA WHENUA HISTORY AND MANA WHENUA ASSOCIATIONS

- 4.3.1** The Maunga were a network of fortified pa across Tāmaki Makaurau. The Maunga made ideal pa sites in their time providing protection to people living there, with defensive measures that took full advantage of higher ground. The adaptable, fertile volcanic soils also offered opportunities to cultivate food and kumara gardens and construct terraces, walls, storage pits, mounds and middens along the slopes.
- 4.3.2** Maungarei is one of the best preserved pā in Tāmaki Makaurau and occupation dates to around 1400AD. The main construction of pā terraces and pits that we see today have been dated back to the mid-sixteenth and late-seventeenth centuries.
- 4.3.3** The land on which Maungarei is situated was part of a large block purchased by the Crown from the Maori owners in 1841. In 1909, part of the southern face of the Maunga was gazetted as a Quarry Reserve with extensive quarrying taking place between 1960 and 1972. Maungarei was returned to the Tūpuna Taonga Trust in 2014.

##### INGOA / THE NAME - MAUNGAREI

- 4.3.4** Maungarei means 'watchful mountain' and is a reference to this Maunga as a highly strategic vantage point, and the ability of the inhabitants to resist attack.

##### WHAKAPIRI / STATEMENTS OF ASSOCIATION:

- 4.3.5** The following Statements of Association are extracted directly from the Ngā Mana Whenua o Tāmaki Makaurau Collective Redress Deed 2012, Ngāi Tai ki Tāmaki Deed of Settlement November 2015, and the Ngāti Paoa Deed of Settlement 2021.
- 4.3.6** The Deeds have been sourced from the Te Kāwanatanga o Aotearoa (New Zealand Government) website.
- 4.3.7** It is left to iwi, to decide how, and if, they wish to share their kōrero for the maunga





#### NGĀI TAI KI TĀMAKI

- 4.3.8** Ngāi Tai ki Tāmaki's association with Maungarei arises from the direct descent from Ngāti Taihaua, Ngāti Taimanawaiti and Te Uri o Te Ao hapū.
- 4.3.9** Founding tūpuna of Ngāti Tai occupied this significant wāhi tapu from the time of Tiki-teauwhatu (alias Te Kete-ana-taua) of the Tainui waka settling the lands west of the Tāmaki River known as Taurere and Te Tauoma, where he married Hinematapāua of the tāngata whenua.
- 4.3.10** The Ngāti Tai and Wai o Hua descendants of their son Taihaua held occupation of Maungarei until another iwi stormed the pā in the very late 1700s or early 1800s. In some written accounts of this battle, the blanket identifier of "Wai o Hua" has often been applied to all of Taihaua's Ngāti Tai descendants at Maungarei at this time.
- 4.3.11** We also understand that, above and beyond ancestral ties to Te Wai o Hua in general terms, another iwi represent the direct descendants of specific Wai o Hua ancestors who also died in the battle when invaders stormed Maungarei but did not occupy. The other iwi were subsequently interred alongside tūpuna of Ngāti Tai at Te Rua-o-Pōtaka.
- 4.3.12** The attacking iwi did not follow this defeat with occupation, but the extent of bloodshed at Maungarei rendered the site highly tapu, and it was subsequently not reoccupied. It remains a highly tapu site for Ngāi Tai to this day.

#### NGĀTI PAOA

- 4.3.13** Maungarei / Mount Wellington has a strong connection for Ngāti Paoa through the ancestress Reipae. Reipae and her sister Reitū travelled northwards on a bird. Reipae stopped at Maungarei / Mount Wellington and resided there before continuing on to Whangarei. Both places are named in her honour (Te Maunga-a-Reipae, Te Whanga-a-Reipae).



DRAFT

- 4.3.14** Maungarei / Mount Wellington holds historical and cultural significance for Ngāti Paoa. By the mid eighteenth century, the Marutūāhu expansion into Tāmaki Makaurau was in its final stages. Ngāti Paoa had developed considerable influence in eastern Tāmaki Makaurau as a result of the status held by several prominent chiefs including Ngaromania at Te Pupu o Kawau and Tahunatorea, Te Putu and his wife Te Kehu at Tauoma, Ngarokiteuru, Uehoka, Ikamokai and Rongomaurikura.
- 4.3.15** Maungarei / Mount Wellington was part of the Mokoia and Maunainā settlements on the Tāmaki River. These settlements were under the leadership of Ngāti Paoa chiefs Te Hinaki and Te Tata. In 1820, British missionaries visited Te Hinaki at Mokoia. One of the missionaries climbed Maungarei / Mount Wellington and “with a single glance beheld the greatest portion of cultivated land I had ever met within one place in New Zealand.” Ngāti Paoa was forced to flee their settlements in 1821 during the musket wars.
- 4.3.16** During the Ōrākei land title investigations, Ngāti Paoa chief Haora Tipa Koinaki testified that Ngāti Paoa had claims to the Kohimarama block. The Kohimarama block extended from Kohimarama across to Karaka Bay and as far south as Mokoia (Panmure). Maungarei / Mount Wellington lies within these boundaries.

NGĀTI TAMAOHO

- 4.3.17** Ngāti Tamaoho's relationship with the whenua and the Maunga of Tāmaki Makaurau is central to its distinctive identity and lineage through the ancient Nga Oho people to the period of earliest settlement of Auckland; and its connection to the mauri of the maunga, and the mana that accompanied that original occupation of land. This ancient ancestral lineage of Ngāti Tamaoho provides a cultural base that delivers cultural strength, certainty and mana to this day.
- 4.3.18** Ngāti Tamaoho have longstanding spiritual, ancestral, cultural, customary and historical interests in this group of Maunga through being an integral part of the Te Waiohū confederation, which over time occupied these places, bringing to all the constituent hapū a source of mana, spiritual wellbeing, livelihood, security and shelter that customarily sustained all its people. Respect for the mana of the Maunga (spiritual authority, protective power, and prestige) of all of the congregation of maunga, is at the heart of the relationship between Ngāti Tamaoho and their maunga.
- 4.3.19** Maungarei / Mount Wellington was a Waiohū stronghold in the 16th Century.

TE ĀKITAI WAIOHUA

- 4.3.20** Maungarei is a Waiohū pa site that was also utilised for kumara and food gardens.
- 4.3.21** The numerous volcanic Maunga in Tāmaki Makaurau made ideal pa sites in their time, providing protection to the people living there, with defensive measures that took full advantage of higher ground. The adaptable, fertile volcanic soils also offered opportunities to cultivate food and kumara gardens and construct terraces, walls, storage pits, mounds and middens along the slopes. Constructed as a defensive pa, Maungarei also featured high maioro (palisades), ditches and banks.
- 4.3.22** Kiwi Tāmaki, progenitor of Te Ākitai Waiohū and paramount chief of Waiohū, stayed mainly at Maungakiekie (One Tree Hill.) He seasonally moved between different Maunga pa sites and stayed at each of them as it came time to harvest various types of food - fish, shellfish, birds, bird eggs and vegetables.
- 4.3.23** The historical, cultural and spiritual association of Te Ākitai Waiohū with the Maunga of Tāmaki Makaurau is essential to the preservation and affirmation of its tribal identity.
- 4.3.24** These Maunga were places of protection and sustenance for generations of Waiohū and were occupied through to the end of Kiwi Tāmaki's leadership at a time when the community was at its height in strength, unity and stability. Waiohū engaged in traditional and symbolic cultural practices on the maunga, but they were also homes where the people lived, fought and died.
- 4.3.25** Thus the history of the Maunga serves as a record of the stories and experiences that have shaped Te Ākitai Waiohū to this day and will continue to do so in the future.

DRAFT

## 4.4 NGĀ MAHINGA ACTIVITIES

### NGĀ MAHINGA I NĀIANEI / PRESENT ACTIVITIES AND INFRASTRUCTURE

- Cultural Activities
- Community organised groups and education activities
- Sports organised groups
- Public car parking areas
- Public toilet facilities
- Sports fields
- Under ground reservoirs and/or associated infrastructure
- Above ground pipelines and fittings for the conveyance of water, wastewater and/or stormwater
- Trig station on tihi
- Dogs - Leashed
- Dog Access – refer [www.maunga.nz](http://www.maunga.nz)

### NGĀ MAHINGA Ā MUA / FUTURE PROJECTS 2021-2031

THEME	PROJECT	1-3 YRS	3-6 YRS	6-10YRS
Takatoranga (Landscape Value)	Pā Reconstruction	●		
	Cultural Infrastructure	●	●	
Healing the Maunga	Vegetation restoration	●	●	●
	Track upgrade		●	
	Fences and barriers	●		
	New track maintenance	●	●	●
Education, Communications & Partnerships	Story telling and interpretation	●		
	Signage	●	●	
Biodiversity Biosecurity	Research projects		●	●
Activation and Recreation	Te Ki o Rahi fields and infrastructure	●	●	
	Te Ki o Rahi programme	●	●	
	Amenity areas (picnic tables and chairs)		●	
	Explore appropriate tourism infrastructure if required.	●	●	●

DRAFT

### HOROPAKI / LOCATION MAP

Maungarei /  
Mount Wellington



### NGĀ MARAE / LOCAL MARAE

Maunga ▲  
Marae ●

DRAFT






MAHIRI PAEINGA / ZONING MAP



-  Historic Reserve
-  Legal Boundary
-  Recreation Reserve
-  Local Purpose Reserve
-  Dog Off-Leash Areas

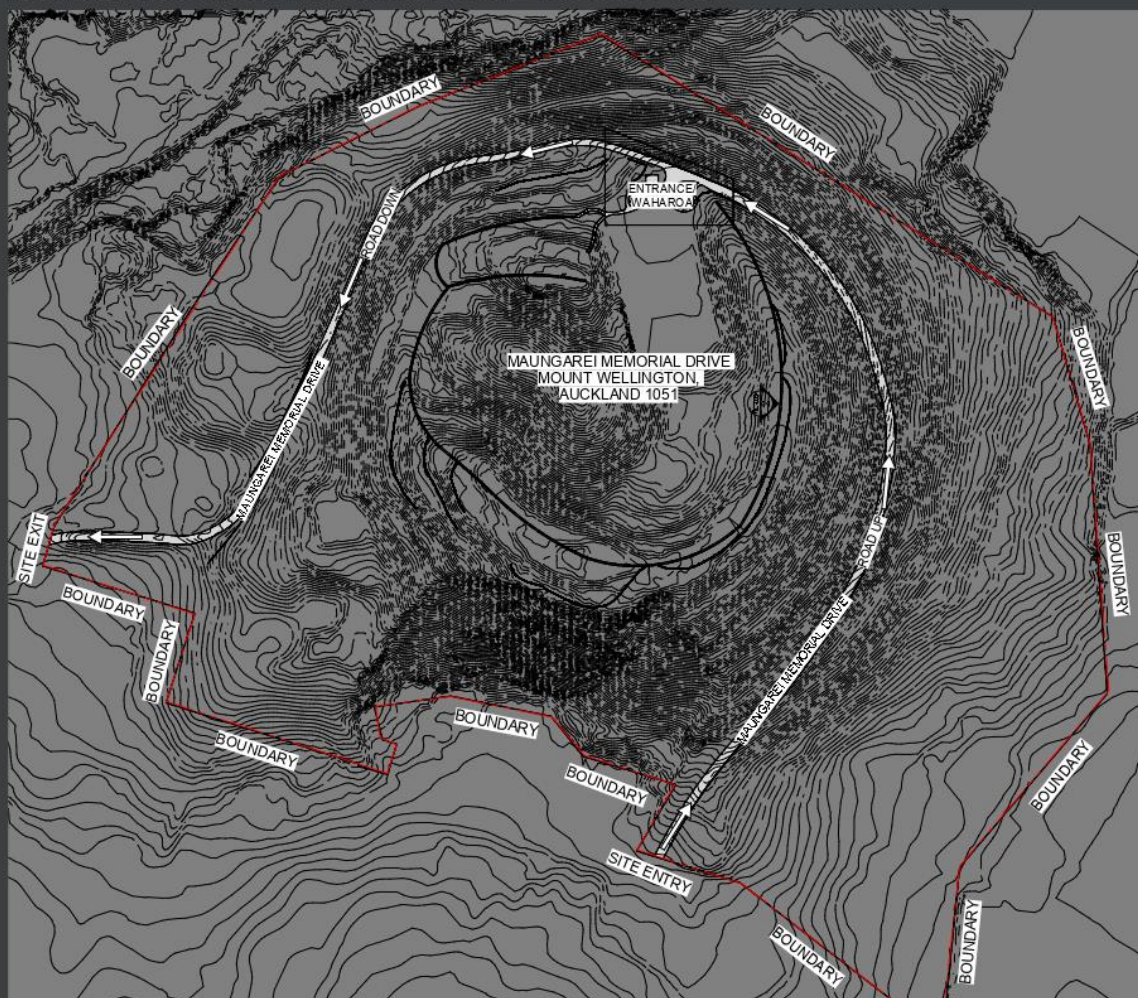
WĀHI MĀTAURANGA / LOCAL EDUCATIONAL FACILITIES



-  Maunga
-  School
-  Pun Reo or Kōhanga Reo
-  Kura Rumaki Reo or Kura Kaupapa Māori
-  University or Private Training Establishment



NGĀ MAHINGA Ā MUA /INDICATIVE FUTURE PROJECT PLANS



## 4.5 AROTURUKI MONITORING AND REVIEW

**4.5.1** The IMP specifically recognises the need for review through the identification of the Monitoring Strategy. The Tūpuna Maunga Monitoring Strategy sets out that each Maunga Plan will have Maunga specific targets.

**4.5.2** The specific targets for Maungarei are:

- Have the future projects been implemented within the specified time frames?
- Is the tihi being respected?
- Are visitor numbers and recreational usage increasing?
- Are the pūrākau (stories) of Maungarei being passed on to future generations?
- Is biodiversity improving?
- Are pest numbers reducing?
- Is feedback on maintenance issues dealt with in a timely manner?
- Is the community valuing the work the Tūpuna Maunga Authority have undertaken on the maunga?
- Are native birds and reptiles increasing?

**4.5.3** The Maungarei Maunga Plan will be updated annually following adoption of the Tūpuna Maunga Operational Plan.

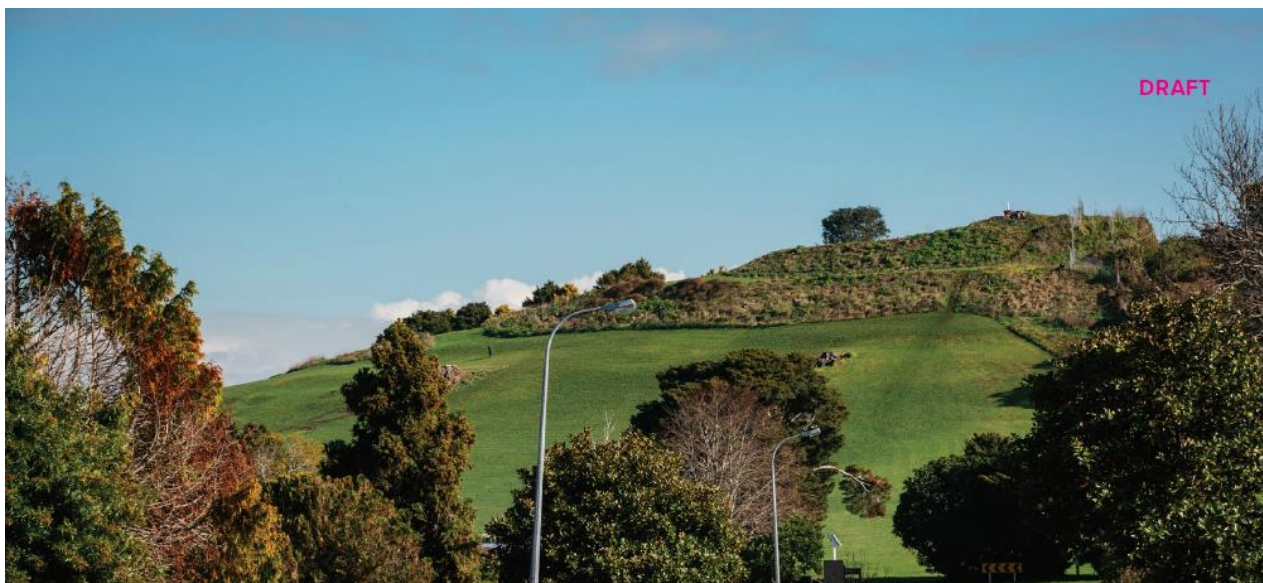




DRAFT

## 8. ŌHUIARANGI / PIGEON MOUNTAIN

Maunga tū Maunga ora, Maunga ora Tāmaki ora  
If the Maunga are well, Tāmaki Makaurau is well



## 8.1 NGĀ MANA WHENUA IWI /HAPŪ WITH INTERESTS IN THE MAUNGA

**8.1.1** The following iwi / hapū have recorded associations to Ōhūiarangi. Each of these iwi hold their own histories and kōrero pertaining to the Maunga. It is up to each individual iwi to choose how they wish to share these stories. Click on the links provided to take you to where these stories have been recorded.

- Ngāi Tai ki Tāmaki
- Ngāti Maru
- Ngāti Tamaoho
- Ngāti Tamatera
- Ngāti Te Ata
- Ngāti Whanaunga
- Ngāti Whātua Ōrākei
- Ngāti Whātua o Kaipara
- Te Ākitai Waiohūa
- Te Kawerau ā Maki
- Te Patukirikiri

## 8.2 NGĀ MOEMOEĀ O NGĀ MAUNGA / THE VISION FOR ŌHUIARANGI

**8.2.1** The vision for Ōhūiarangi is to enhance the mauri of the Maunga, improve the visitor experience, understanding and respect for the Maunga.

**8.2.2** Māra Kai and Māra Hupara are proposed to be established.

**8.2.3** Cattle have been removed to prevent further damage to cultural and archaeological features. All infrastructure associated with farming (cattle yards, trough and fences around planted areas) will be removed.

**8.2.4** Paths are proposed to be upgraded, signage including track maps are proposed to be installed. Through signage and design elements mountain biking is to be discouraged to again, prevent further damage to cultural and archaeological features, particularly on the tihi.

**8.2.5** An informal platform on the tihi is proposed, along with engagement with LINZ regarding the future of the damaged/unused trig marker. The northern cliff face and Pine trees on the cliff face will be monitored for health and safety risks and stability. Over time, the Pine trees will be replaced by native specimens along with native revegetation of the cliff face. A programme of weed and pest control will be continued.





### 8.3 NGĀ WHAKAPAPA O NGĀ MANA WHENUA HISTORY AND MANA WHENUA ASSOCIATIONS

- 8.3.1** The Maunga were a network of fortified pa across Tāmaki Makaurau. The Maunga made ideal pa sites in their time providing protection to people living there, with defensive measures that took full advantage of higher ground. The adaptable, fertile volcanic soils also offered opportunities to cultivate food and kūmara gardens and construct terraces, walls, storage pits, mounds and middens along the slopes.
- 8.3.2** Colonisation resulted in Ōhūiarangi being quarried for local roading metal from the mid 1800's until the 1970's when it ceased following a community campaign. Only half of the original Maunga remains today.

#### INGOA / THE NAME - ŌHUIARANGI

- 8.3.3** Ōhūiarangi is named after the ancient pre-Tainui ancestress Huiarangi who lived there. The name Ōhūiarangi translates as 'the desire of Rangi'. More detail is provided in the Ngāi Tai ki Tāmaki Statement of Association below.

#### WHAKAPIRI / STATEMENTS OF ASSOCIATION

- 8.3.4** The following Statements of Association are extracted directly from the Ngā Mana Whenua o Tāmaki Makaurau Collective Redress Deed 2012, and Ngāi Tai ki Tāmaki Deed of Settlement November 2015.
- 8.3.5** The Deeds have been sourced from the Te Kāwanatanga o Aotearoa (New Zealand Government) website.
- 8.3.6** It is left to iwi, to decide how, and if, they wish to share their kōrero for the Maunga.





#### NGĀI TAI KI TĀMAKI

- 8.3.7** Ngāi Tai ki Tāmaki claim a strong cultural and historic association with Ōhūiarangi.
- 8.3.8** The Maunga is named for the ancient pre-Tainui ancestress Huiarangi of Te Tini o Maruiwi and Ngāti Ruatāmore, from whom Ngāi Tai ki Tāmaki trace descent by the marriage of the founding Ngāti Tai ancestors Hinematapāua of Ngāti Ruatāmore and Tiki-te-auwhatu (Te Kete-ana-taua) of Tainui waka; parents of the eponymous ancestor Taihaua.
- 8.3.9** In the pūrakau or legends of Ngāi Tai ki Tāmaki, Ōhūiarangi is also associated with the even more ancient ancestors known as Tūrehu; those who “arose from beneath the earth” led by our ancestor Koiwiriki of Te Iwi Hūnua, and fought a cataclysmic battle at this site known as Te Pakuranga-rāhīhī (“The Battle of the Sun’s Rays”). This poetic description of the volcanic birth of Ōhūiarangi Maunga also gives the name to present-day Pakuranga, but more importantly, these Tūrehu associations express Ngāi Tai ki Tāmaki’s whakapapa links to the Atua Ruaumoko and the realm of Rarohenga.
- 8.3.10** The maunga is thus a highly significant wāhi tapu to Ngāi Tai, representing cultural, spiritual and genealogical links between this world and the next. Ōhūiarangi is the site of ancient volcanic burial caves, many (but not all) of which were severely damaged along with two thirds of the entire Maunga as a result of Pākehā capitalism.
- 8.3.11** Ōhūiarangi was also an important place of ritual and the site of a sacred tūāhu (stone altar), which was also destroyed as a consequence of Pākehā industry.
- 8.3.12** The pā of Ōhūiarangi was occupied by our ancestors, and is particularly associated with the Ngāi Tai ki Tāmaki chiefs Te Whataatau, Te Wana and Te Rangitāwhia of Te Uri o Te Ao, Ngāti Te Raukohekohe and Ngāti Rangitāwhia hapū of Ngāi Tai. These two pā represented the principal strongholds of Ngāi Tai ki Tāmaki in the East Tāmaki/Howick/Pakuranga region at this time.
- 8.3.13** Te Naupata and Ōhūiarangi were evacuated during the Musket War period, following which, Ngāi Tai ki Tāmaki ancestors placed a tapu over the wider Waipaparoa/Ōwairoa (Howick) and Pakuranga areas. The tapu applied particularly to the sites of Te Naupata and Ōhūiarangi.
- 8.3.14** Ngāi Tai burials continued on the Maunga subsequent to the introduction of Christianity during the 1830s. These urupā have also been destroyed by twentieth century “development” activities.
- 8.3.15** Ngāi Tai ki Tāmaki’s association with Ōhūiarangi remains strong to this day.





#### NGĀTI TAMAHO

- 8.3.16** Ngati Tamaoho's relationship with the whenua and the Maunga of Tamaki Makaurau is central to its distinctive identity and lineage through the ancient Nga Oho people to the period of earliest settlement of Auckland; and its connection to the mauri of the Maunga, and the mana that accompanied that original occupation of land. This ancient ancestral lineage of Ngati Tamaoho provides a cultural base that delivers cultural strength, certainty and mana to this day.
- 8.3.17** Ngati Tamaoho have longstanding spiritual, ancestral, cultural, customary and historical interests in this group of Maunga through being an integral part of the Te Waiohua confederation, which over time occupied these places, bringing to all the constituent hapu a source of mana, spiritual wellbeing, livelihood, security and shelter that customarily sustained all its people. Respect for the mana of the Maunga (spiritual authority, protective power, and prestige) of all of the congregation of Maunga, is at the heart of the relationship between Ngati Tamaoho and their Maunga.
- 8.3.18** Waiohua settled in Ōhutarangi / Pigeon Mountain until the seventeenth century.

#### TE ĀKITAI WAIHUA

- 8.3.19** Ōhutarangi is a Waiohua pa site that was also utilised for kumara and food gardens.
- 8.3.20** The numerous volcanic Maunga in Tamaki Makaurau made ideal pa sites in their time, providing protection to the people living there, with defensive measures that took full advantage of higher ground. The adaptable, fertile volcanic soils also offered opportunities to cultivate food and kumara gardens and construct terraces, walls, storage pits, mounds and middens along the slopes.
- 8.3.21** Kiwi Tamaki, progenitor of Te Akitai Waiohua and paramount chief of Waiohua, stayed mainly at Maungakiekie (One Tree Hill.) He seasonally moved between different Maunga pa sites and stayed at each of them as it came time to harvest various types of food - fish, shellfish, birds, bird eggs and vegetables.
- 8.3.22** The historical, cultural and spiritual association of Te Akitai Waiohua with the Maunga of Tamaki Makaurau is essential to the preservation and affirmation of its tribal identity.
- 8.3.23** These Maunga were places of protection and sustenance for generations of Waiohua and were occupied through to the end of Kiwi Tamaki's leadership at a time when the community was at its height in strength, unity and stability. Waiohua engaged in traditional and symbolic cultural practices on the Maunga, but they were also homes where the people lived, fought and died.
- 8.3.24** Thus the history of the Maunga serves as a record of the stories and experiences that have shaped Te Akitai Waiohua to this day and will continue to do so in the future.



## 8.4 NGĀ MAHINGA ACTIVITIES

### NGĀ MAHINGA I NĀIANEI / PRESENT ACTIVITIES

- Cultural Activities
- Community organised groups and education activities
- Sports organised groups
- Public car parking areas
- Public toilet facilities
- Sports fields
- Underground infrastructure for water, wastewater and/or stormwater
- Trig station on tihi
- Dogs - Leashed
- Dog Access – refer [www.maunga.nzDog](http://www.maunga.nzDog)

### NGĀ MAHINGA Ā MUA / FUTURE PROJECTS 2021-2031

THEME	PROJECT	1-3 YRS	3-6 YRS	6-10 YRS
Healing the Maunga	Vegetation restoration	●	●	
	Carpark, entrance ways and gates	●		
	Track upgrade	●		
	Track network review		●	
	Fences and barriers	●		
	Removal of redundant infrastructure	●		
Education, Communications & Partnerships	Story telling and interpretation	●		
	Signage	●	●	
Biodiversity Biosecurity	Māra Kai		●	
	Māra Kai Maintenance		●	●
	Research projects		●	●
Activation and Recreation	Māra Hūpara		●	



DRAFT

### HOROPAKI / LOCATION MAP

Ōhūiarangi /  
Pigeon Mountain

### NGĀ MARAE / LOCAL MARAE

Maunga ▲  
Marae ●

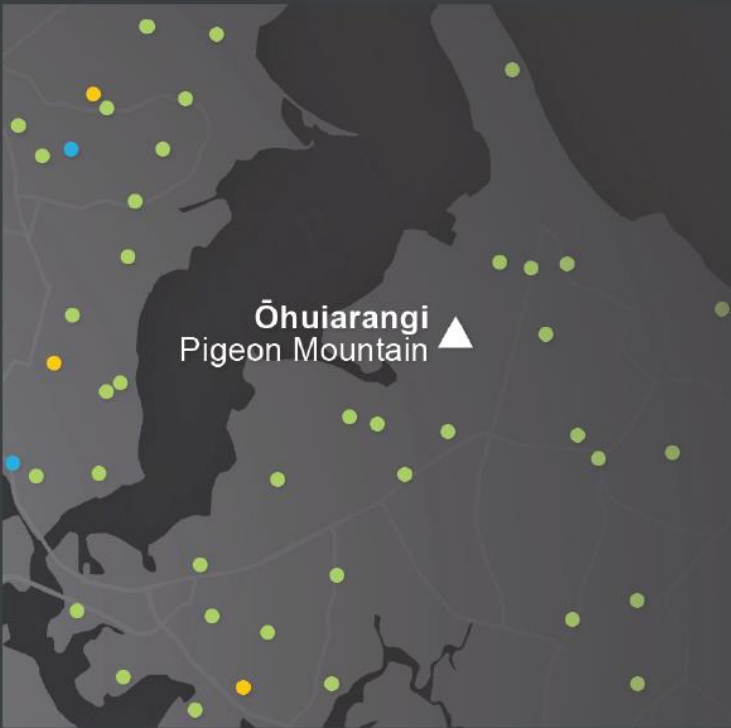
DRAFT






MAHIRI PAEINGA / ZONING MAP



-  Historic Reserve
-  Legal Boundary
-  Recreation Reserve
-  Local Purpose Reserve
-  Dog Off-Leash Areas

WĀHI MĀTAURANGA / LOCAL EDUCATIONAL FACILITIES



-  Maunga
-  School
-  Pun Reo or Kōhanga Reo
-  Kura Rumaki Reo or Kura Kaupapa Māori
-  University or Private Training Establishment



DRAFT

NGĀ MAHINGA Ā MUA /INDICATIVE FUTURE PROJECT PLANS



KEY



1200mm wide compacted gravel track



fences removed

1

Redesigned entry

2

Gates removed

3

Planting to remove desire line

4

Car body removed

5

Cattle trough removed

6

Gates removed and signage updated

7

Cattle yards and race fences removed. Boundary fence retained



KEY

1200mm wide compacted gravel track

1000mm wide mown grass path or grass route with markers

1200mm wide timber boardwalk

Stage 2 grass path or route with markers

Boxed timber steps with gravel tread

Informal basalt stone and gravel steps

Informal basalt stone and gravel steps Stage 2

Signage with track map

Pedestrian access blocked by bank of hardy planting

Options A & B for possible gravel track/boardwalk access to look-out

Railing on northern side of boardwalk to discourage mountain biking

Removal of trig marker on hill and construction of informal flat platform with basalt stone & gravel

Existing areas of revegetation planting

Future exotic tree removal and revegetation planting



## 8.5 AROTURUKI MONITORING AND REVIEW

**8.5.1** The IMP specifically recognises the need for review through the identification of the Monitoring Strategy. The Tūpuna Maunga Monitoring Strategy sets out that each Maunga Plan will have Maunga specific targets.

**8.5.2** The specific targets for Ōhūiarangi are:

- Have the future projects been implemented within the specified time frames?
- Has mountain biking on the tihi stopped?
- Is the tihi being respected?
- Are the pūrākau (stories) of Ōhūiarangi being passed on to future generations?
- Are visitor numbers and recreational usage increasing?
- Is biodiversity improving?
- Are pest numbers reducing?
- Is the community valuing the work the Tūpuna Maunga Authority have undertaken on the Maunga?

**8.5.3** The Ōhūiarangi Maunga Plan will be updated annually following adoption of the Tūpuna Maunga Operational Plan.



## Summer Delegations 2022/23

Authors: Dominic Wilson, Head of Co-governance, Leigh Collecutt, Tūpuna Maunga Manager

<b>Purpose</b>	To consider a series of delegations to support continued operations over the 2022/23 summer period
<b>Recommendations</b>	<p>That the Tūpuna Maunga Authority:</p> <ul style="list-style-type: none"><li>a) <b>delegate</b> to the Manager, Tūpuna Maunga, and the Head of Co-Governance the power to carry out the mahi of the RMA Rōpū for the period from 7 December 2022 until new appointments are made to that Rōpū in the new term.</li><li>b) <b>delegate</b> authority to the Filming and Events Rōpū to make decisions on all “major events” (pursuant to the delegations on Events and Filming) until 6 December 2022.</li><li>c) <b>delegate</b> authority to the Manager, Tūpuna Maunga, to make decisions on all event, filming, drone use and commercial still photography applications (pursuant to the delegations on Events and Filming) for the period from 7 December 2022 until new appointments are made to that Rōpū in the new term.</li><li>d) <b>delegate</b> authority to the Chair and Deputy Chair to approve any Guy Fawkes programme for 2022 to protect the maunga from fires over the Guy Fawkes 2022 period.</li></ul>

## Background

1. Hui 79 is the final scheduled hui for the Tūpuna Maunga Authority in 2022 and the term of office of all members concludes on 6 December 2022.
2. Management propose certain delegations be made to allow for activities and ongoing business over the summer period following Hui 70 and until new appointments are completed for the Authority.

## Statutory and other considerations

3. All decisions of the Authority must take into account the legislative and policy framework.
4. Section 109(2) of Ngā Mana Whenua o Tāmaki Makaurau Collective Redress Act 2014 requires the Authority to have regard to the spiritual, ancestral, cultural, customary, and historical significance of the Maunga to Ngā Mana Whenua o Tāmaki Makaurau and that the Tūpuna Maunga is held in trust for Ngā Mana Whenua and the other people of Auckland.
5. The Tūpuna Maunga Authority’s Integrated Management Plan was unanimously adopted (Mana Whenua and Auckland Council members) by the Authority pursuant to the Ngā Mana Whenua o Tāmaki Makaurau Collective Redress Act 2014 and Reserves Act 1977. The Integrated Management Plan describes a series of “Values” and “Pathways” that guide all activities on the Tūpuna Maunga.
6. The Tūpuna Maunga Authority (Mana Whenua and Auckland Council members) unanimously adopted the Tūpuna Maunga Strategies at Hui 50 on 25 September 2020. The Tūpuna

Maunga Strategies are 7 key sections that outline the strategic direction with regards to education, Biodiversity, Tūpuna Maunga design, Recreation, commercial activities and monitoring. Together with the IMP, these strategies inform guide and manage the activities undertaken on the Maunga.

7. The Authority administers the Tūpuna Maunga under the Reserves Act 1977 and pursuant to Ngā Mana Whenua o Tāmaki Makaurau Collective Redress Act 2014. The Hauraki Gulf Marine Park Act 2000 is also applicable in relation to Maungauika.

## **Discussion**

### ***Delegations RMA Rōpū***

8. The RMA Rōpū is responsible for decision making for the Tūpuna Maunga Authority on relevant Resource Management Act (RMA) matters.
9. It has the delegation to participate in RMA matters as per the approved terms of reference and thresholds, adopted at Hui 32 (15 December 2017). The main mahi for this rōpū is responding to consent applications that relate to maunga or maunga viewshafts.
10. The RMA Rōpū has been functioning since 2017 and has settled practice and process.
11. Management propose that there be a delegation to the Manager Tūpuna Maunga and to Head of Co-Governance to respond to consent applications and continue the mahi of the RMA Rōpū for the period from the end of the term on 6 December 2022 until new appointments are made to the Rōpū in the new term.

### ***The Filming and Events Rōpū***

12. The role of the Filming and Events rōpū is to make decisions on event, filming, drone use and commercial still photography applications (pursuant to delegations on Events and Filming adopted at Hui 1 (15 September 2014) and Hui 3 (3 November 2014)). Specifically, medium sized events as defined in the delegation for filming and events on the Tūpuna Maunga that was adopted at Hui 3 (3 November 2014).
13. The Filming and Events Rōpu will generally refer major events to the Tūpuna Maunga Authority. This Rōpū has built up a practice and procedure for such applications.
14. The Tūpuna Maunga Manager has an existing delegation to approve minor events such as picnics and small gatherings. A delegation was also given to the filming and events rōpu to consider drone use applications at Hui 39 (27 August 2018).
15. Management propose the following delegations:
  - a. A delegation to the Filming and Events Rōpū to make decisions on “major” events for the period until the end of this Authority term on 6 December 2022; and,
  - b. A delegation to the Manager, Tūpuna Maunga, to consider and determine all event, filming, drone use, and commercial still photography applications for the period from 7 December 2022 until new appointments are completed for the Rōpū in the new term.

### ***Guy Fawkes Programme***

16. Fireworks are the number one cause of fires on the Tūpuna Maunga. At Hui 22 (21 November 2016) following further fireworks fires on the Maunga, the Authority formally opposed the use of fireworks on the Tūpuna Maunga. At Hui 67 (27 September 2021) the Authority noted the protection measures proposed by management during the 2021 Guy Fawkes period.



17. Management propose that the Authority delegate to the Chair and Deputy Chair the power to approve any Guy Fawkes programme for 2022 to protect the maunga from fires over the period.

**Next steps**

18. Management will continue to review all RMA consent applications and processes (such as the proposed Auckland Unitary Plan Change 78) and support the RMA Rōpū with this mahi.
19. Management will draft a programme to protect the maunga from fires over the Guy Fawkes 2022 period.
20. Management will continue to review all event, filming, drone use and commercial still photography applications and support the Filming and Events Rōpū with this mahi.

**Attachments**

There are no attachments for this report.





## Research Scholarship

Authors: Brooke Waterson – Kaiwhakahono Kaupapa, Leigh Collecutt – Kaiwhakahaere  
Tūpuna Maunga

<b>Purpose</b>	To seek a decision from the Tūpuna Maunga Authority on the Tūpuna Maunga Research Scholarship for 2022/2023.
<b>Recommendations</b>	That the Tūpuna Maunga Authority:  a) <b>approve</b> proceeding with the allocation of the Tūpuna Maunga Authority Research Scholarship for 2022/23 as set out in the report.

## Background

1. The Tūpuna Maunga Research Policy was adopted at Hui 71 (14 February 2022).
2. Alongside the policy, the Tūpuna Maunga Authority agreed to make up to \$10,000 available to contribute to research projects deemed to be beneficial for the Tūpuna Maunga.
3. This funding can be allocated to one or more applicants.
4. Aims of the scholarship include:
  - a. provide opportunities for public to engage with the Maunga as a space of learning and discovery
  - b. support student learning
  - c. help gather detailed, site-specific information which supports effective management of the Maunga.
5. The Research Policy indicates that the Authority will consider applications for the grant on an annual basis.

## Statutory and other considerations

6. All decisions of the Authority must take into account the legislative and policy framework.
7. Section 109(2) of Ngā Mana Whenua o Tāmaki Makaurau Collective Redress Act 2014 requires the Authority to have regard to the spiritual, ancestral, cultural, customary, and historical significance of the Maunga to Ngā Mana Whenua o Tāmaki Makaurau and that the Tūpuna Maunga is held in trust for Ngā Mana Whenua and the other people of Auckland.
8. The Tūpuna Maunga Authority's Integrated Management Plan was unanimously adopted (Mana Whenua and Auckland Council members) by the Authority pursuant to the Ngā Mana Whenua o Tāmaki Makaurau Collective Redress Act 2014 and Reserves Act 1977. The Integrated Management Plan describes a series of "Values" and "Pathways" that guide all activities on the Tūpuna Maunga.
9. The Tūpuna Maunga Authority (Mana Whenua and Auckland Council members) unanimously adopted the Tūpuna Maunga Strategies at Hui 50 on 25 September 2020. The Tūpuna Maunga Strategies are 7 key sections that outline the strategic direction with regards to education, Biodiversity, Tūpuna Maunga design, Recreation, commercial activities and monitoring. Together with the IMP, these strategies inform guide and manage the activities undertaken on the Maunga.

10. The Authority administers the Tūpuna Maunga under the Reserves Act 1977 and pursuant to Ngā Mana Whenua o Tāmaki Makaurau Collective Redress Act 2014. The Hauraki Gulf Marine Park Act 2000 is also applicable in relation to Maungauika.
11. Within the monitoring strategy, mechanisms are outlined which enable the education strategy to be implemented. This includes creation of a list of research projects for tertiary students to undertake as part of their qualifications.

## Discussion

### **Overview of scholarship round**

12. Management has since communicated both the policy and the scholarship through the Maunga.nz website and has targeted promotion to stakeholders and interested parties. This included a letter sent on 07 July 2022 to Mana Whenua, Members of the Authority and other interested parties including Universities and secondary and tertiary education organisations.
13. The scholarship open application period was from 04 July 2022 to 07 August 2022.
14. One scholarship application was received during the grant round. As agreed by the Authority at Hui 71, the scholarship application was initially reviewed by Management to determine its suitability and alignment with Tūpuna Maunga values.

### **Application summary**

15. The applicant is Arapeta Ashton – a weaver, carver and PHD candidate, who is studying fine arts at Auckland University with whakapapa to Ngāti Whanaunga.
16. The application received by Management is for a Doctoral study in Fine Arts. The name of the research project is Ngā Tohu o Te Whau, and seeks to engage with

*“.....Maungawhau as an investigation of the Whau Tree ..... through contemporary photography and whakaaro.”*

17. The project outline states that “the research project uses photography and carving as indigenous tools for storytelling of Whau. The research will develop an exhibition and photographic series of taonga made of whau wood from samples of whau harvested from Maungawhau.”
18. The applicant is applying for the full \$10,000 to cover photo printing and framing, tools, gear, petrol/travel, and exhibition hire fees.

### **Assessment:**

19. Management considers that this application aligns well with the TMA approved research project list (“research on customary practices relating to the Maunga, e.g. rāanga, whakaaro, and rongoā”).
20. It also aligns well with the objective that priority be given to research projects that are endorsed by Mana Whenua and recognises the connection between the Maunga and its people.
21. As such, Management suggest recommends granting of the scholarship to this applicant for their research subject to the following conditions:
  - a. The Applicant is solely responsible for complying with the COVID-19 Protection Framework and all it entails.
  - b. The Applicant will provide a Health and Safety Plan.



- c. The Tūpuna Maunga are Alcohol and Smoke free spaces. Alcohol and Smoking is NOT permitted at all time during this activity.
- d. The Applicant must provide a waste management plan and ensure that no rubbish is left on the maunga.
- e. All communication, signage and documentation is to use the formally recognised ancestral names of the Maunga.
- f. The applicant will ensure that while conducting their research, minimal impact and disturbance is made to the Maunga, taonga species, visitors, staff and contractors.
- g. The applicant must work with the Tūpuna Maunga Authority's Management team to monitor harvesting practises.
- h. At any public exhibition of the body of works or in any essays or reports, there is public acknowledgement of the Tūpuna Maunga Authority, The Tūpuna Taonga Trust and Nga Mana Whenua o Tāmaki Makaurau for allowing the activity to occur.
- i. The applicant must present the works at an exhibition at Te Ipū Kōrero o Maungawhau (Tūpuna Maunga Visitor Experience Centre).
- j. The body of work will be made available to the Tūpuna Maunga Authority to use for promotion of the Tūpuna Maunga, to enhance the health and wellbeing of the Tūpuna Maunga and the promotion of the Research Grant in future years.
- k. The applicant will ensure that while conducting their research they will follow tikanga, including but not limited to staying out of wāhi tapu (sacred places).
- l. The Applicant shall ensure that nothing is fixed, hung or otherwise attached to any features of the Maunga (eg. trees, street furniture, lamp-posts, etc.) without the prior consent of the Maunga Authority or its delegate.
- m. The Applicant is liable for remedial works including dead grass that may occur as a result of the activity. All re-establishment works will be fit for purpose and only ensure the asset is re-instated to the same condition prior to the activity.
- n. Public acknowledgement of the Tūpuna Maunga Authority and Nga Mana Whenua o Tāmaki Makaurau for allowing the activity to occur.
- o. Public access to the Maunga/reserve must be made available at all times during the activity.
- p. The applicant is required to consult the Tūpuna Maunga Authority about the appropriate way to credit them and the Tūpuna Taonga Trust in all publications and communications about the research.
- q. The applicant is required to provide a draft proposal for the proposed artwork prior to developing any art pieces.
- r. The applicant is required to report back to the landowner on their research findings.
- s. The applicant will be required to undergo an induction before working on the Maunga, which will be facilitated by a delegate of the Tūpuna Maunga Authority.
- t. The applicant is required to return any leftover materials taken from the Maunga back to Maungawhau in an appropriate manner when the carving has been undertaken.

### **Next steps**

22. If the Authority decides to offer the scholarship, Management will work alongside the applicant to ensure the research is undertaken successfully, and in accordance with the permitting conditions.

### **Attachments**

There are no attachments for this report.



## Takarunga Playcentre lease

Authors: Lucia Kohler, Kaihautu Hotaka and Leigh Collecutt, Kaiwhakahaere Tupuna Maunga

<b>Purpose</b>	To consider offering the Takarunga Playcentre a lease on Takarunga/Mount Victoria
<b>Recommendations</b>	<p>That the Tūpuna Maunga Authority:</p> <p>a) <b>delegate</b> to the Chair and Deputy Chair the power to execute a lease, including a Maunga Outcomes Plan, with the Takarunga Playcentre at a market rental (as determined by a registered valuer) and otherwise on the standard terms and conditions.</p> <p>b) <b>delegate</b> to the Chair and Deputy Chair the power to agree to terms governing the termination arrangements of the Takarunga Playcentre should the Playcentre decide not to accept the new lease.</p>

## Background

1. The Takarunga Playcentre (the Playcentre) lease was inherited by the Tūpuna Maunga Authority. This lease was originally with the North Shore City Council (predecessor to Auckland Council) and was drafted in accordance with that council's policy at the time.
2. The Playcentre occupies an area of Takarunga/Mount Victoria which is classified as a Local Purpose Reserve. The location of the lease area is shown in Attachment A.
3. The Playcentre owns and maintains the building that they currently occupy.
4. The lease expires in August 2023.

## Statutory and other considerations

5. This paper relates to Takarunga/Mount Victoria
6. Clause 2.3 of the Ngā Mana Whenua o Tāmaki Makaurau Collective Redress Deed 2012 states:
 

“2.3 The Tāmaki Makaurau collective legislation will, on the terms provided by section 43 of the draft bill, direct the Registrar-General to record on any computer freehold register for each Maunga that the iwi and hapū of Ngā Mana Whenua o Tāmaki Makaurau specified for that Maunga in table 1 of part 3 of the property redress schedule have spiritual, ancestral, cultural, customary and historical interests in the Maunga.”
7. The Collective Deed Property Redress Schedule contains the table referred to in clause 2.3, and the iwi/hapū having spiritual, ancestral, cultural, customary and historical interests in the Maunga are as follows:

Takarunga / Mt Victoria	Ngāi Tai ki Tāmaki Ngāti Maru Ngāti Pāoa Ngāti Tamaoho Ngāti Tamaterā Ngāti Te Ata	Ngāti Whātua Ōrākei Ngāti Whātua o Kaipara Te Ākitai Waiohūa Te Kawerau ā Maki Te Patukirikiri Te Rūnanga o Ngāti Whātua
-------------------------	---	---

	Ngāti Whanaunga	
--	-----------------	--

8. Any decision to determine management within a reserve must take into account the legislative and policy framework.
9. The Authority administers the Tūpuna Maunga under the Reserves Act 1977 and pursuant to Ngā Mana Whenua o Tāmaki Makaurau Collective Redress Act 2014. The Hauraki Gulf Marine Park Act 2000 is also relevant. The activities of the Club are consistent with the reserve classification.
10. Section 109(2) of Ngā Mana Whenua o Tāmaki Makaurau Collective Redress Act 2014 requires the Authority to have regard to the spiritual, ancestral, cultural, customary, and historical significance of the Maunga to Ngā Mana Whenua o Tāmaki Makaurau and that the Tūpuna Maunga is held in trust for Ngā Mana Whenua and the other people of Auckland.
11. The Tūpuna Maunga Authority's Integrated Management Plan (IMP) was adopted by the Authority in terms of Ngā Mana Whenua o Tāmaki Makaurau Collective Redress Act 2014 and the Reserves Act 1977. The Integrated Management Plan describes a series of "Values" and "Pathways" that guide all activities on the Tūpuna Maunga. The primary focus of the IMP is to protect the health and well-being of the Tūpuna Maunga.
12. The Tūpuna Maunga Authority adopted the Tūpuna Maunga Strategies at Hui 50 on 25 September 2020. The Tūpuna Maunga Strategies are 7 key sections that outline the strategic direction with regards to education, Biodiversity, Tūpuna Maunga design, Recreation, commercial activities and monitoring. Together with the IMP, these strategies inform guide and manage the activities undertaken on the Maunga.
13. Section 61 of the Reserves Act 1977 sets out the Authority's powers in relation to leasing on a Local Purpose Reserve. The activities of Playcentre are consistent with the classification of the reserve.

## Discussion

### *Playcentre*

14. Playcentre is an early childhood education and parenting organisation which operates parent-led early childhood education centres throughout New Zealand. Each Playcentre is cooperatively managed by parents and supported by Te Whānau Tupu Ngātahi o Aotearoa - Playcentre Aotearoa. Its philosophy is that parents are the first educators of children and it encourages the involvement of whānau in early childhood education.

### *Leases on Tūpuna Maunga*

15. The Tūpuna Maunga o Tāmaki Makaurau Integrated Management Plan (IMP) describes a series of values and pathways that dictate decision-making on leases. The IMP places the health and well-being of the Tūpuna Maunga at the heart of all decisions.
16. Any leasing activity must be consistent with the IMP Tūpuna Maunga values and should actively promote those values. Takarunga Playcentre is very supportive of developing and implementing a Maunga Outcomes Plan if granted a lease.



## **Terms**

### Term

17. The approach to date has been to initially offer a short-term lease to give Playcentre the opportunity to demonstrate their contribution to the wellbeing of the Maunga and the values set out in the IMP.
18. Management proposes an initial term of 12 months to allow time to for the Playcentre to deliver on Maunga outcomes and for those to be reviewed.

### Rental

19. A market rental valuation has been undertaken by an independent registered valuer. The estimated rental is \$6,060 + GST

## **Next Steps**

20. If a lease is to be offered, Management will work alongside the Playcentre to draft a Tūpuna Maunga Lease for consideration and execution by the Chair and Deputy Chair.

## **Attachments**

Attachment A: Indicative Takarunga Playcentre lease area shown in red  





**Attachment A:** Indicative Takarunga Playcentre lease area shown in red








## Registers

Authors: Nicholas Turoa – Kaiwhakahaere Te Waka Tairanga Whenua, Brooke Waterson – Kaiwhakahono Kaupapa

<b>Purpose</b>	To provide the Tūpuna Maunga Authority with updated registers for: a) Health & Safety (Attachment A) b) Events (Attachment B)
<b>Recommendations</b>	That the Tūpuna Maunga Authority: a) <b>note</b> the attached Registers, which have been updated since Hui 78

## Registers

Attachment A: Health and Safety Register [↓](#) 

Attachment B: Events Register [↓](#) 





Health and Safety Register

Hui reported to	Maunga	Summary of incident	Number of any near misses	Outcome of investigations into any incidents and near misses	Health and Safety management matters arising	Actions Taken
Hui 79	Maungawhau / Mt Eden	Staff encountered confrontation with a rough sleeper camping on Maungawhau		This incident occurred when staff approached someone who was sleeping in a tent on the tihi of Maungawhau to ask them to remove their tent and were subsequently involved in a confrontational exchange.	Conflict	Police were called and tent was removed from the Maunga.  Management continue to monitor Maungawhau and other Maunga for this type of activity.
Hui 79	Maungawhau / Mt Eden	Complaint received about large boulder which had come loose and was suspended over the road reserve on Clive Rd.		It was identified that the area in question was within the road reserve and therefore the responsibility of Auckland Transport.	Risk of falling impact for vehicles and members of the public	Management worked with Auckland Transport to arrange for boulder to be moved under urgency given the seriousness of the risk.  Long term have requested that proactive structural work is undertaken on this area.
Hui 78	Maungakiekie / One Tree Hill	Stardome staff member tripped in small ditch during evening event		This incident occurred because it was dark and a ditch has been created where buses and other vehicles drive over the grass when it is soft.	Low light  Trip hazard	Short term – signage in place  Long term - capital works road circulation project seeks to address traffic issues and vehicles being able to turn in the bay where the Stardome building is. Lighting options to be considered.
Hui 78	Maungakiekie / One Tree Hill	Arborist was feeding a branch chipper and it caught, causing him to step back and hit his head on a low hanging branch.		This incident occurred due to the chipper getting jammed and there being a low hanging branch within close proximity to where the contractor was working.	Environmental factors	Work site was moved away from where low hanging branches were located.
Hui 78	Ōtāhuhu / Mt Richmond	Car went through barrier on Mt Wellington highway during a wet night after coming around the corner.		This incident likely occurred because the driver was going too fast around a corner in the wet weather and the road was slippery	Slippery surface  Speed  Sharp corner	Management understands that Auckland Transport are doing work to reconfigure the road area outside of the Maunga given the sharpness of this corner.
Hui 78	Maungakiekie / One Tree Hill	Two people have been locked wharepaku due to issue with magnetic timed locking mechanism		This incident occurred because there was a fault with the power to the magnetic lock.  This meant that when the button was pressed to open the door, the magnet was not able to be released.	Faulty magnet	Immediate – signage in place and toilet locked from outside so public can't enter.  Maintenance of the power unit undertaken.

Hui reported to	Maunga	Summary of incident	Number of any near misses	Outcome of investigations into any incidents and near misses	Health and Safety management matters arising	Actions Taken
Hui 78	Maungawhau / Mt Eden	Two cyclists have fallen off their bikes after coming down the tihi road in the wet.		The tihi road is relatively steep and it is easy for cyclists to have gained high speeds as they turn right into Puhi Huia Road.  These incidents occurred during a period of extremely rainy weather.	Slippery surface  Speed  Windy and rainy weather	Immediate – signage in place  Long term – this road will be narrowed and speed measures implemented as part of the Maungawhau Stage 2 tihi upgrades. The upgrades will commence in the coming weeks and the tihi road closed off.
Hui 75	Maungakiekie / One Tree Hill	Woman was injured whilst using flying fox as component of it broke off.		The incident occurred because a piece of the equipment broke. While attempts have continued to be made to maintain the equipment to a safe standard, flying foxes pose an inherent risk due to their nature.		Flying fox has since been decommissioned to prevent any further issues occurring.
Hui 72	Maungauika / North Head	On a wet day, contractor vehicle started sliding down roadway from lower car park towards Takarunga Road into speed bump.		Previous health and safety reports have indicated that the road at Maungauika becomes slippery on rainy days, particularly on the painted areas. Due to the extremity of heavy rain and the age of the road, it is uncertain if they are connected, however management are pushing to complete previous actions regarding safety of painted areas.	Slippery surface  Windy and rainy weather	Roading engineer to be commissioned to review road safety on site.
Hui 72	Te Pane o Mataoho / Te Ara Pueru / Māngere Mountain	Contractor was taking out timber boards from shipping container when a gust of wind suddenly shut the door of the container and back of his hand got hit by the edges of the bolts causing a minor laceration at the knuckle.			Windy weather	Site manager Immediately applied first aid to stop the bleeding and asked him to go home for the day. Advised to monitor the injury and if the pain worsens, seek medical attention.
Hui 71	Maungawhau / Mt Eden	Jogger did not see rise in track (which had been built up for drainage purposes) and fell forward down onto the aggregate track, hurting her foot.		The grade dips along the path were put into place as a means to ensure that the track drains effectively and does not hold water. Upon investigation it was noted that these grade dips were particularly high and could be reduced while still ensuring that the drainage happens as it should. It was noted that this indent happened at dusk, when levels of light also likely had an impact.	Trip hazard  Low light	Grade dips were reshaped to make the undulation in the track less extreme.



Hui reported to	Maunga	Summary of incident	Number of any near misses	Outcome of investigations into any incidents and near misses	Health and Safety management matters arising	Actions Taken
Hui 71	Maungauika / North Head	On a wet day, a pedestrian slipped at the on the large patch of road art at the front vehicle entrance to the Maunga and fractured her wrist.		The incident occurred because the surface of the paint was slippery, and it was a rainy day. It was also noted that there needed to be signage in place warning members of the public of the hazard so that they make sure to use the pedestrian entrance, and not the vehicle entrance.	Slippery surface and wet weather	Short term – signage has been put in place either side of the entrance gate warning the public of the hazard. Reapplication of a non-slip glass bead will be placed on the surface.  Long term – management will trial a new non slip product to the road surface and if this is not satisfactory then road art will be removed.
Hui 71	Maungakiekie / One Tree Hill	While playing on the flying fox a child rebounded and lost her grip, causing her to come off and break her hip and fracture her wrist.		The incident occurred due to the rubber tubing attached to the seat of the flying fox being slippery, causing the child to not be able to hold on to it. When the flying fox hit the end of the cable, the child was not able to maintain her grip.	Slippery hand grip	Management have reviewed the routine audits that have been undertaken which ensure that playground equipment is safe to use. Ensuring that the rubber tubing has sufficient grip will be factored into audits going forward.  New tubing with better grip has been fed onto the pommel as an immediate action.
Hui 71	Puketāpapa / Pukewīwī / Mt Roskill	Staff member was undertaking routine firebreak audits early on a Saturday morning and was abused from a neighbouring property				We have altered the time of day when inspections take place and ensure that staff members are not alone when these happen.
Hui 71	Maungakiekie / One Tree Hill	A large tree branch fell on to two cars badly damaging one of them.		A large branch from one of the oaks split on a windy day.	Natural hazard (tree) and wind	Contractors have been engaged to work on a proactive tree maintenance programme to ensure that any identified dangerous tree branches are removed before they cause harm.





Attachment B: Events Register

Hui reported to	Maunga	Applicant	Event Description	Event date	Status	Revenue
Hui 79	Maungauika / North Head	North Shore Marathon	Commercial/private	4 September 2022	Approved	\$900 (ex GST)
Hui 79	Maungarei / Mt Wellington	Northern School Cycling Tour	Community	3 September 2022	Approved	\$380 (ex GST)
Hui 79	Maungawhau / Mt Eden	Ficino School Cross Country	Community	19 August 2022	Approved	\$0
Hui 79	Maungakiekie / One Tree Hill	Everywhere K filming	Commercial/private	12 August 2022	Approved	\$600 (ex GST)
Hui 79	Te Pane o Mataoho / Te Ara Pueru / Māngere Mountain	MUMA Matariki dawn hīkoi	Community	26 June 2022	Approved	\$0
Hui 78	Maungarei	Te Tauoma filming	Commercial/private	22 July 2022	Approved	\$0
Hui 78	Maungarei	School fun run and bbq	Community	1 July 2022	Approved	\$0
Hui 78	Maungawhau	CRL dusk Matariki hīkoi	Community	30 June 2022	Approved	\$0
Hui 78	Puketāpapa	Local Board Kite Day	Community	26 June 2022	Approved	\$0
Hui 78	Maungawhau	Pop up piano	Community	25 June 2022	Approved	\$380 (ex GST)
Hui 78	Takarunga	Lantern dusk Matariki hīkoi	Community	25 June 2022	Approved	\$0
Hui 78	Ōwairaka	Ōwairaka School dawn Matariki hīkoi	Community	23 June 2022	Approved	\$0
Hui 78	Maungawhau	Link Alliance staff dawn Matariki hīkoi	Commercial/private	23 June 2022	Approved	\$0
Hui 78	Maungakiekie	One Tree Hill College dawn Matariki hīkoi	Community	23 June 2022	Approved	\$0
Hui 78	Maungarei	Tāmaki Regeneration dawn Matariki hīkoi	Community	23 June 2022	Approved	\$0

Hui reported to	Maunga	Applicant	Event Description	Event date	Status	Revenue
Hui 78	Ōtāhuhu	Kiwi vs Tonga NZRL community day	Community	22 June 2022	Approved	\$380 (ex GST)
Hui 78	Maungakiekie	Stardome light show	Community	18 June 2022 to 25 June 2022	Approved	\$0
Hui 75	Maungawhau and Maungakiekie	Roady for Roadies	Community	29 April 2022	Approved	\$280 (ex GST)
Hui 75	Maungauika	Greenstone TV filming	Commercial/private	27 April 2022	Approved	\$1,200 (ex GST)
Hui 75	Maungawhau	Music concert	Community	24 April 2022	Approved	\$380 (ex GST)
Hui 75	Maungawhau	Birthday picnic	Community	23 April 2022	Approved	\$600 (ex GST)
Hui 75	Maungawhau	CRL filming	Commercial/private	20 April 2022	Approved	\$600 (ex GST)
Hui 75	Maungawhau	Auckland City Brass concert	Community	10 April 2022	Approved	\$380 (ex GST)
Hui 75	Maungakiekie	Chiropractic College health screening – repeat session	Community	3 April 2022	Approved	\$0
Hui 75	Maungawhau	Richmond Road School hīkoi	Community	31 March 2022	Approved	\$0
Hui 75	Ōwairaka	MAGS kapa haka picnic	Community	25 March 2022	Approved	\$0
Hui 75	Maungakiekie	Central Interceptor Discovery Centre – repeat session	Community	20 March 2022	Approved	\$0
Hui 75	Maungakiekie	Central Interceptor Discovery Centre	Community	6 March 2022	Approved	\$0
Hui 75	Maungakiekie	Chiropractic College health screening	Community	6 March 2022	Approved	\$0
Hui 75	Maungauika	Devonport Half Marathon	Commercial	27 February 2022	Approved	\$1,200 (ex GST)
Hui 75	Maungawhau	New Zealand Tourism	Commercial	14 February 2022	Approved	\$1,200 (ex GST)

Hui reported to	Maunga	Applicant	Event Description	Event date	Status	Revenue
Hui 67	Maungauika	North Shore Marathon	Commercial	5 September 2021	Cancelled	-
Hui 67	Maungarei	New Zealand Secondary Schools Cycling Champs	Community	4 September 2021	Cancelled	-